

**Shiloh Springs**  
Garland, Texas

**1 Mile Radius**

**3 Mile Radius**

**5 Mile Radius**

**10 Minute Drive**

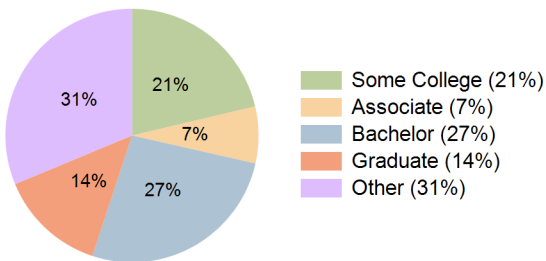
### Current Year Demographics

Current Population	8,274	96,048	305,714	134,990
Total Daytime Pop	8,850	120,855	345,681	163,022
Workplace Pop	4,752	70,973	178,018	92,683
Average Household Income	\$103,742	\$94,332	\$86,073	\$87,269
Median Household Income	\$77,238	\$72,536	\$66,675	\$67,732
Total Households	3,245	35,203	107,109	48,946
Median Home Value	\$304,114	\$265,257	\$245,763	\$237,011
Bachelors Degree	34.2%	29.2%	24.6%	26.5%
Graduate Degree	17.4%	15.5%	12.5%	13.7%
Total Consumer Spending/Capita (Weekly)	\$343	\$334	\$326	\$328

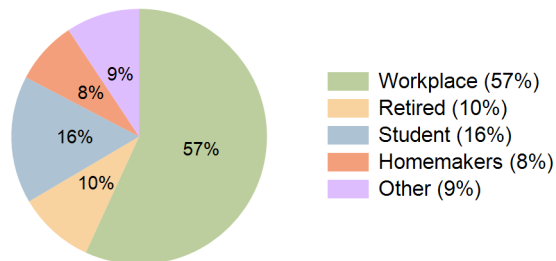
### 2023 Demographic Projections

Projected Population	8,489	101,412	322,323	141,552
Projected 5 Year Annual Growth Rate (Pop)	0.5%	1.1%	1.1%	1.0%
Projected Households	3,330	37,198	112,604	51,325
Projected 5 Year Annual Growth Rate (HH)	0.5%	1.1%	1.0%	1.0%

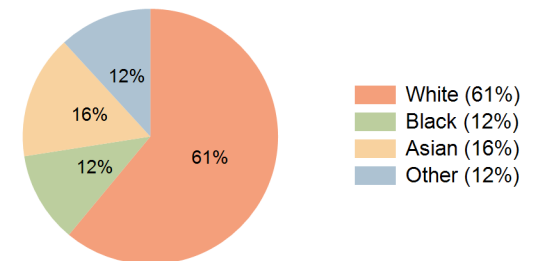
**Education (10 Minute Drive)**



**Daytime Population (10 Minute Drive)**

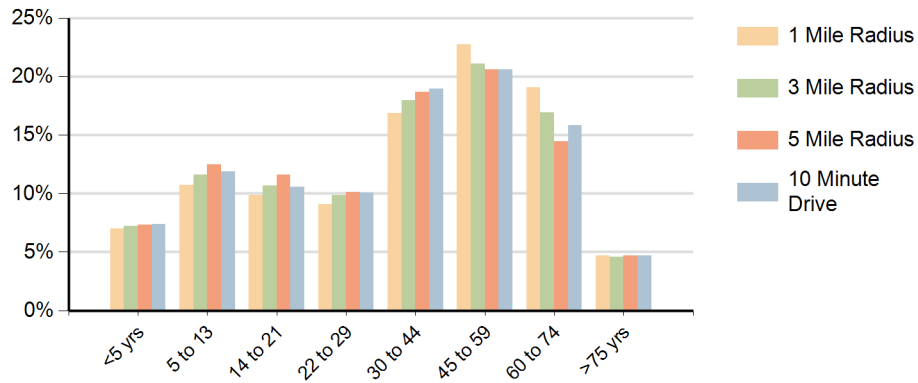


**Race (10 Minute Drive)**

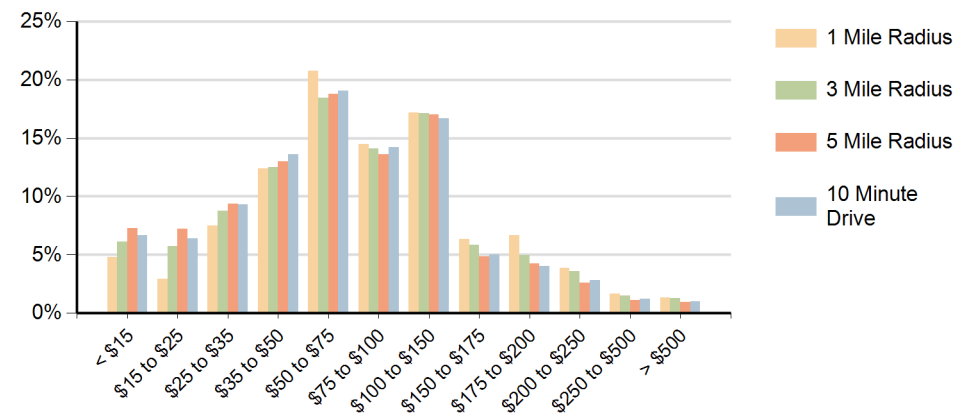


**Hispanic Ethnicity**  
23% Hispanic | 77% Non Hispanic

### Population by Age Range



### Households by Income Range (\$000)



Shiloh Springs Garland, Texas		1 Mile Radius	3 Mile Radius	5 Mile Radius	10 Minute Drive
Population	Current Estimated Population	8,274	96,048	305,714	134,990
	2010 Census Population	7,724	84,341	273,674	119,264
	2000 Census Population	6,814	72,252	236,859	104,723
	Historical Annual Growth 2000 to 2010	1.3%	1.6%	1.5%	1.3%
	Estimated Annual Growth 2010 to 2018	0.8%	1.6%	1.4%	1.5%
	Projected Annual Growth 2018 to 2023	0.5%	1.1%	1.1%	1.0%
Households	Current Estimated Households	3,245	35,203	107,109	48,946
	2010 Census Households	3,029	30,852	95,960	43,202
	2000 Census Households	2,464	25,635	83,821	37,077
	Historical Annual Growth 2000 to 2010	2.1%	1.9%	1.4%	1.5%
	Estimated Annual Growth 2010 to 2018	0.8%	1.6%	1.3%	1.5%
	Projected Annual Growth 2018 to 2023	0.5%	1.1%	1.0%	1.0%
	Population per Household	2.6	2.7	2.8	2.7
Ethnic	Hispanic or Latino Population	13%	18%	25%	23%
	Non Hispanic or Latino Population	87%	82%	75%	77%
Race	White	65.9%	60.2%	60.8%	61.0%
	Black or African American	9.9%	11.8%	11.5%	11.5%
	Asian & Pacific Islander	17.2%	18.2%	15.0%	15.7%
	Other Races	7.0%	9.8%	12.8%	11.8%