

| Bethany Park Place Allen, Texas | 1 Mile Radius | 3 Mile Radius | 5 Mile Radius | 10 Minute Drive |
|------------------------------------|---------------|---------------|---------------|-----------------|
|------------------------------------|---------------|---------------|---------------|-----------------|

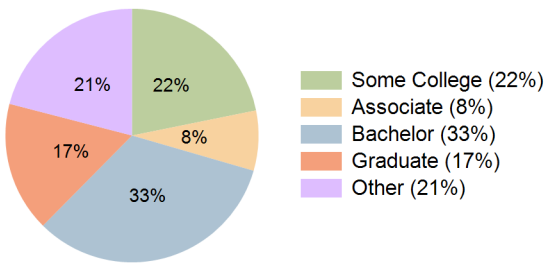
Current Year Demographics

| | | | | |
|---|-----------|-----------|-----------|-----------|
| Current Population | 13,789 | 71,533 | 208,278 | 99,441 |
| Total Daytime Pop | 5,915 | 69,342 | 163,917 | 93,867 |
| Workplace Pop | 1,120 | 22,909 | 48,534 | 30,829 |
| Average Household Income | \$118,310 | \$109,455 | \$114,978 | \$113,910 |
| Median Household Income | \$106,437 | \$93,097 | \$88,976 | \$91,828 |
| Total Households | 4,592 | 24,486 | 70,490 | 34,457 |
| Median Home Value | \$274,901 | \$284,094 | \$318,956 | \$304,937 |
| Bachelors Degree | 33.0% | 32.2% | 33.1% | 32.9% |
| Graduate Degree | 16.9% | 15.0% | 15.9% | 16.6% |
| Total Consumer Spending/Capita (Weekly) | \$358 | \$350 | \$349 | \$350 |

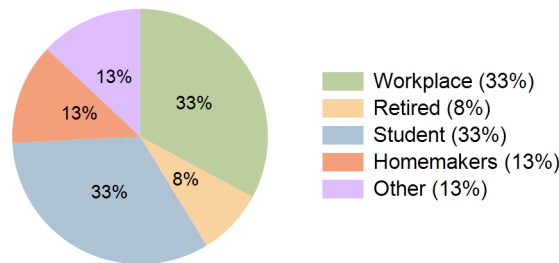
2023 Demographic Projections

| | | | | |
|---|--------|--------|---------|---------|
| Projected Population | 13,704 | 72,940 | 220,461 | 103,758 |
| Projected 5 Year Annual Growth Rate (Pop) | -0.1% | 0.4% | 1.1% | 0.9% |
| Projected Households | 4,562 | 25,107 | 74,537 | 36,021 |
| Projected 5 Year Annual Growth Rate (HH) | -0.1% | 0.5% | 1.1% | 0.9% |

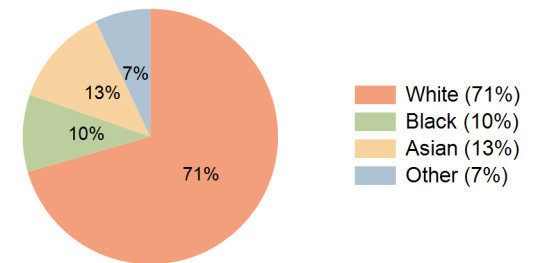
Education (10 Minute Drive)



Daytime Population (10 Minute Drive)

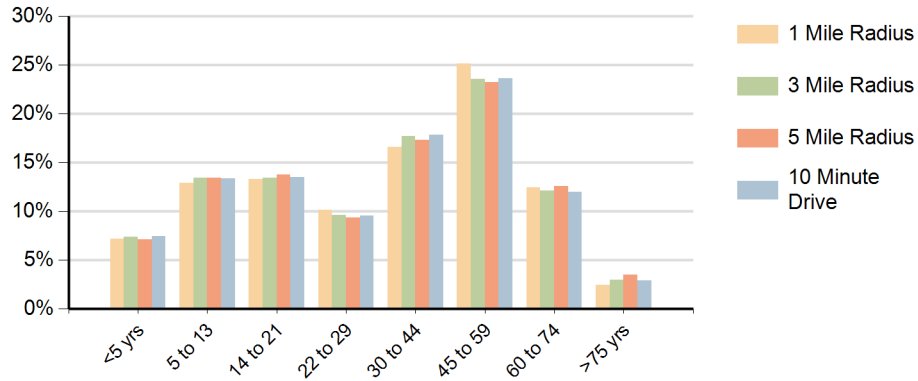


Race (10 Minute Drive)

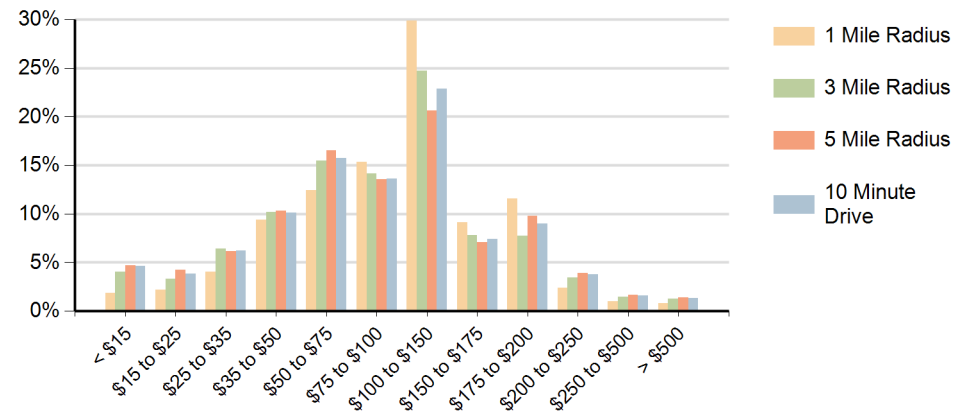


Hispanic Ethnicity
13% Hispanic | 87% Non Hispanic

Population by Age Range



Households by Income Range (\$000)



| Bethany Park Place Allen, Texas | | 1 Mile Radius | 3 Mile Radius | 5 Mile Radius | 10 Minute Drive |
|------------------------------------|---------------------------------------|---------------|---------------|---------------|-----------------|
| Population | Current Estimated Population | 13,789 | 71,533 | 208,278 | 99,441 |
| | 2010 Census Population | 12,746 | 64,683 | 177,639 | 86,875 |
| | 2000 Census Population | 10,016 | 38,709 | 110,618 | 53,467 |
| | Historical Annual Growth 2000 to 2010 | 2.4% | 5.3% | 4.9% | 5.0% |
| | Estimated Annual Growth 2010 to 2018 | 1.0% | 1.2% | 1.9% | 1.7% |
| | Projected Annual Growth 2018 to 2023 | -0.1% | 0.4% | 1.1% | 0.9% |
| Households | Current Estimated Households | 4,592 | 24,486 | 70,490 | 34,457 |
| | 2010 Census Households | 4,245 | 21,967 | 60,137 | 29,968 |
| | 2000 Census Households | 3,208 | 12,939 | 38,079 | 18,415 |
| | Historical Annual Growth 2000 to 2010 | 2.8% | 5.4% | 4.7% | 5.0% |
| | Estimated Annual Growth 2010 to 2018 | 1.0% | 1.3% | 1.9% | 1.7% |
| | Projected Annual Growth 2018 to 2023 | -0.1% | 0.5% | 1.1% | 0.9% |
| | Population per Household | 3.0 | 2.9 | 2.9 | 2.9 |
| Ethnic | Hispanic or Latino Population | 12% | 12% | 16% | 13% |
| | Non Hispanic or Latino Population | 88% | 88% | 84% | 87% |
| Race | White | 73.8% | 71.3% | 70.1% | 70.5% |
| | Black or African American | 10.4% | 10.4% | 9.3% | 9.8% |
| | Asian & Pacific Islander | 9.7% | 11.6% | 12.6% | 12.7% |
| | Other Races | 6.1% | 6.7% | 8.0% | 7.0% |