

Alden Bridge Village Center
The Woodlands, Texas

1 Mile Radius

3 Mile Radius

5 Mile Radius

10 Minute Drive

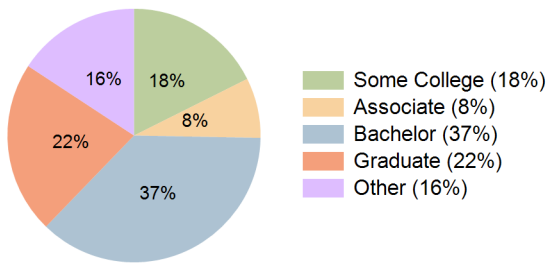
Current Year Demographics

Current Population	11,583	61,203	128,743	90,797
Total Daytime Pop	11,815	55,861	118,150	92,340
Workplace Pop	2,282	17,254	46,464	33,226
Average Household Income	\$147,241	\$152,098	\$143,279	\$148,821
Median Household Income	\$123,531	\$121,265	\$110,287	\$116,037
Total Households	4,032	21,709	47,421	33,169
Median Home Value	\$432,990	\$394,682	\$379,959	\$395,316
Bachelors Degree	47.9%	40.0%	35.5%	36.9%
Graduate Degree	24.4%	22.1%	20.7%	22.0%
Total Consumer Spending/Capita (Weekly)	\$356	\$351	\$345	\$349

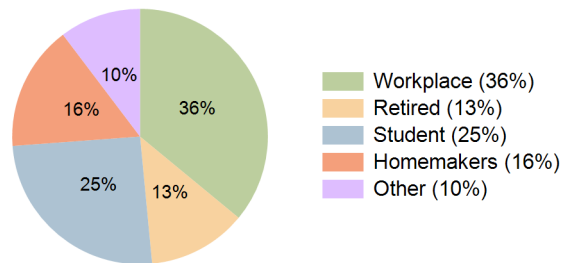
2023 Demographic Projections

Projected Population	11,303	65,359	143,775	99,061
Projected 5 Year Annual Growth Rate (Pop)	-0.5%	1.3%	2.2%	1.8%
Projected Households	3,939	23,212	52,998	36,340
Projected 5 Year Annual Growth Rate (HH)	-0.5%	1.3%	2.2%	1.8%

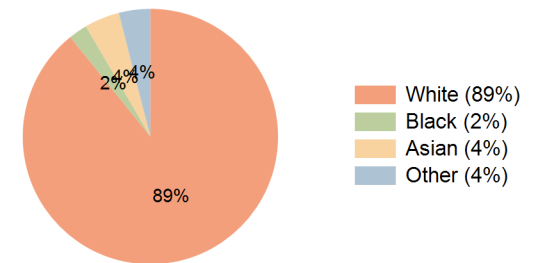
Education (10 Minute Drive)



Daytime Population (10 Minute Drive)



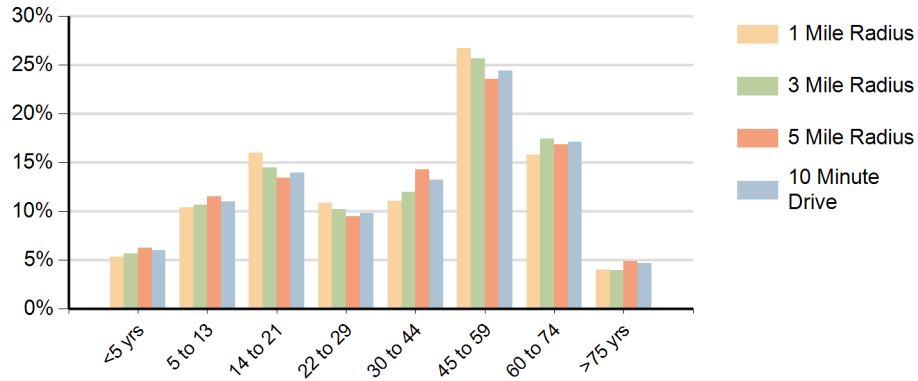
Race (10 Minute Drive)



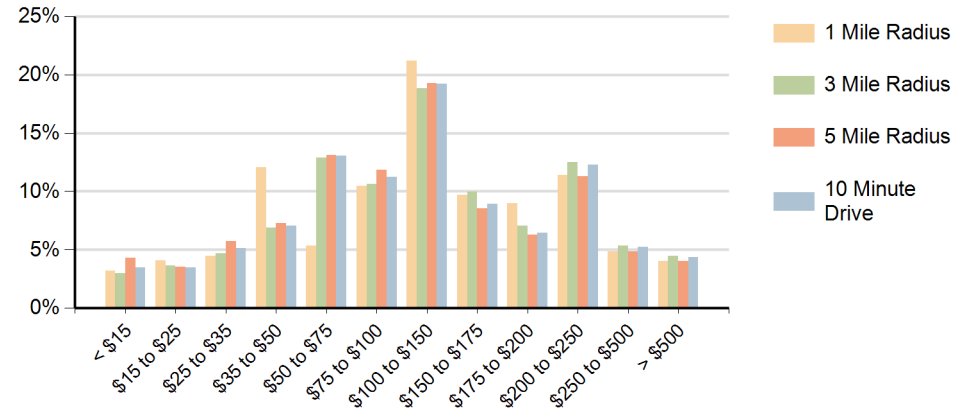
Hispanic Ethnicity

12% Hispanic | 88% Non Hispanic

Population by Age Range



Households by Income Range (\$000)



Alden Bridge Village Center The Woodlands, Texas		1 Mile Radius	3 Mile Radius	5 Mile Radius	10 Minute Drive
Population	Current Estimated Population	11,583	61,203	128,743	90,797
	2010 Census Population	11,155	52,109	102,794	75,480
	2000 Census Population	10,020	35,660	61,182	47,216
	Historical Annual Growth 2000 to 2010	1.1%	3.9%	5.3%	4.8%
	Estimated Annual Growth 2010 to 2018	0.5%	2.0%	2.8%	2.3%
	Projected Annual Growth 2018 to 2023	-0.5%	1.3%	2.2%	1.8%
Households	Current Estimated Households	4,032	21,709	47,421	33,169
	2010 Census Households	3,869	18,410	37,721	27,366
	2000 Census Households	3,097	11,460	20,683	15,499
	Historical Annual Growth 2000 to 2010	2.2%	4.9%	6.2%	5.8%
	Estimated Annual Growth 2010 to 2018	0.5%	2.0%	2.8%	2.4%
	Projected Annual Growth 2018 to 2023	-0.5%	1.3%	2.2%	1.8%
	Population per Household	2.9	2.8	2.7	2.7
Ethnic	Hispanic or Latino Population	10%	11%	13%	12%
	Non Hispanic or Latino Population	90%	89%	87%	88%
Race	White	90.9%	90.1%	88.4%	89.2%
	Black or African American	1.1%	1.9%	2.8%	2.4%
	Asian & Pacific Islander	4.8%	4.4%	4.3%	4.4%
	Other Races	3.2%	3.6%	4.5%	4.0%