

Saratoga Shopping Center
Springfield, Virginia

1 Mile Radius

3 Mile Radius

5 Mile Radius

10 Minute Drive

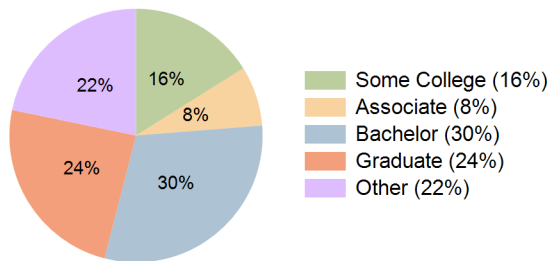
Current Year Demographics

Current Population	9,740	95,037	217,357	67,287
Total Daytime Pop	13,832	78,603	201,380	64,567
Workplace Pop	9,452	35,284	96,418	35,871
Average Household Income	\$134,344	\$135,482	\$134,145	\$128,157
Median Household Income	\$124,109	\$119,020	\$115,589	\$113,638
Total Households	3,270	33,365	76,458	23,582
Median Home Value	\$573,514	\$625,568	\$617,061	\$606,495
Bachelors Degree	29.8%	30.1%	29.8%	30.3%
Graduate Degree	24.1%	26.4%	25.4%	24.2%
Total Consumer Spending/Capita (Weekly)	\$397	\$398	\$395	\$392

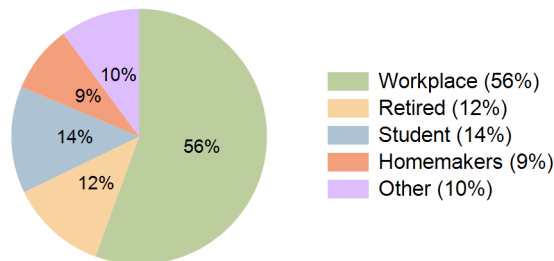
2023 Demographic Projections

Projected Population	9,912	98,040	222,394	69,800
Projected 5 Year Annual Growth Rate (Pop)	0.4%	0.6%	0.5%	0.7%
Projected Households	3,327	34,429	78,277	24,470
Projected 5 Year Annual Growth Rate (HH)	0.3%	0.6%	0.5%	0.7%

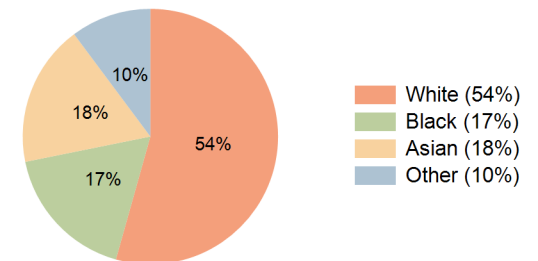
Education (10 Minute Drive)



Daytime Population (10 Minute Drive)



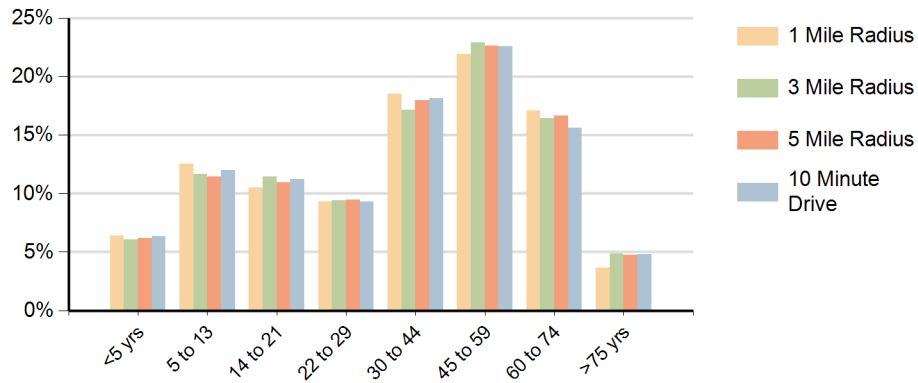
Race (10 Minute Drive)



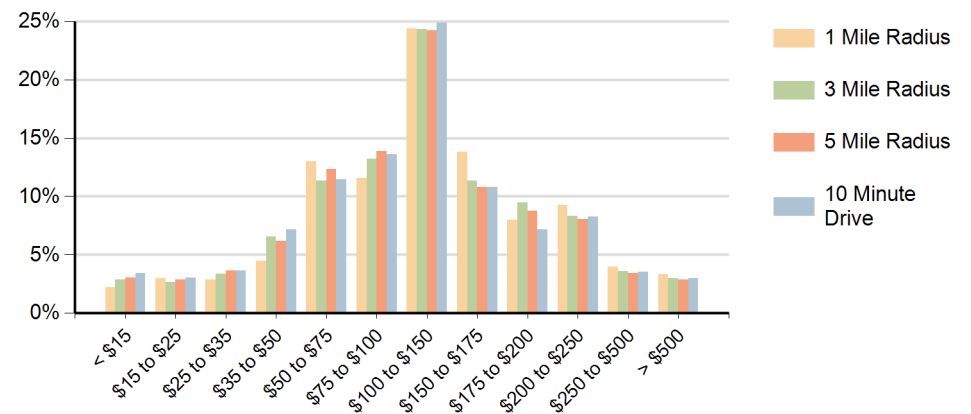
Hispanic Ethnicity

13% Hispanic | 87% Non Hispanic

Population by Age Range



Households by Income Range (\$000)



Saratoga Shopping Center Springfield, Virginia		1 Mile Radius	3 Mile Radius	5 Mile Radius	10 Minute Drive
Population	Current Estimated Population	9,740	95,037	217,357	67,287
	2010 Census Population	9,466	91,149	210,716	64,085
	2000 Census Population	9,405	76,977	189,196	52,917
	Historical Annual Growth 2000 to 2010	0.1%	1.7%	1.1%	1.9%
	Estimated Annual Growth 2010 to 2018	0.3%	0.5%	0.4%	0.6%
	Projected Annual Growth 2018 to 2023	0.4%	0.6%	0.5%	0.7%
Households	Current Estimated Households	3,270	33,365	76,458	23,582
	2010 Census Households	3,179	31,986	74,254	22,472
	2000 Census Households	3,143	26,378	66,030	17,961
	Historical Annual Growth 2000 to 2010	0.1%	1.9%	1.2%	2.3%
	Estimated Annual Growth 2010 to 2018	0.3%	0.5%	0.4%	0.6%
	Projected Annual Growth 2018 to 2023	0.3%	0.6%	0.5%	0.7%
	Population per Household	3.0	2.8	2.8	2.8
Ethnic	Hispanic or Latino Population	14%	12%	15%	13%
	Non Hispanic or Latino Population	86%	88%	85%	87%
Race	White	59.0%	58.2%	59.9%	54.4%
	Black or African American	15.4%	15.4%	13.3%	17.5%
	Asian & Pacific Islander	14.2%	17.2%	16.7%	18.0%
	Other Races	11.4%	9.2%	10.1%	10.2%