

**Fox Mill Shopping Center**  
Herndon, Virginia

**1 Mile Radius**

**3 Mile Radius**

**5 Mile Radius**

**10 Minute Drive**

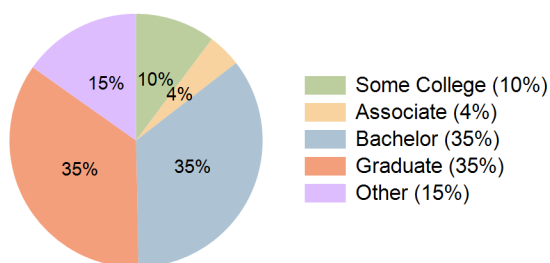
### Current Year Demographics

Current Population	11,591	113,300	247,188	102,348
Total Daytime Pop	11,093	162,581	334,524	141,754
Workplace Pop	4,364	104,265	210,032	92,961
Average Household Income	\$175,475	\$175,434	\$168,938	\$171,797
Median Household Income	\$152,101	\$139,067	\$134,671	\$136,557
Total Households	4,002	42,693	93,129	39,257
Median Home Value	\$823,825	\$777,698	\$756,290	\$773,825
Bachelors Degree	31.8%	35.1%	35.1%	35.2%
Graduate Degree	35.2%	35.3%	33.2%	35.1%
Total Consumer Spending/Capita (Weekly)	\$441	\$433	\$430	\$431

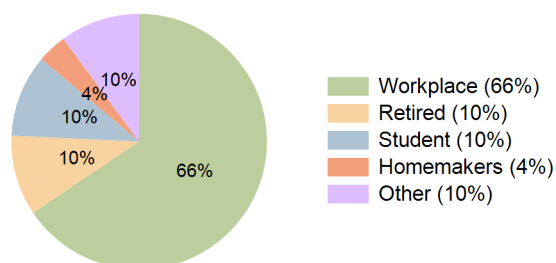
### 2027 Demographic Projections

Projected Population	12,218	119,562	257,602	107,603
Projected 5 Year Annual Growth Rate (Pop)	1.1%	1.1%	0.8%	1.0%
Projected Households	4,212	45,094	97,213	41,365
Projected 5 Year Annual Growth Rate (HH)	1.0%	1.1%	0.9%	1.1%

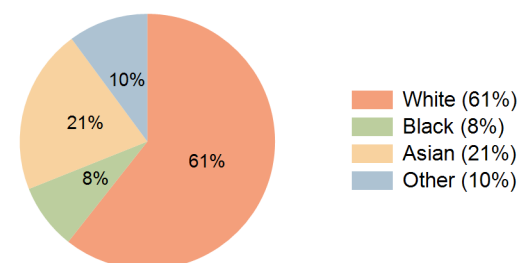
**Education (10 Minute Drive)**



**Daytime Population (10 Minute Drive)**

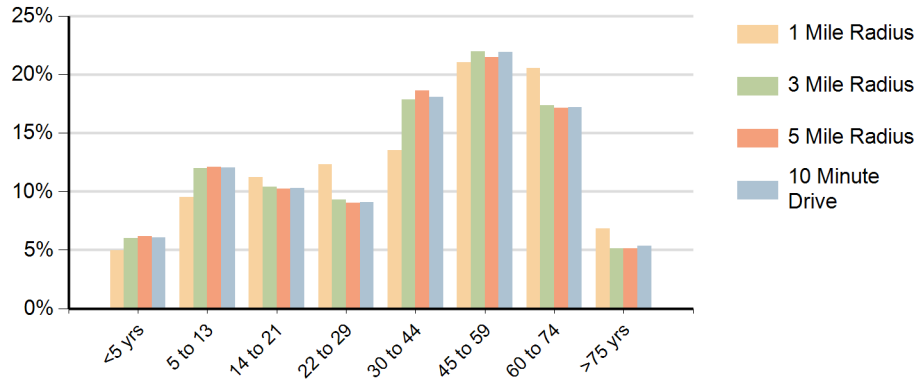


**Race (10 Minute Drive)**

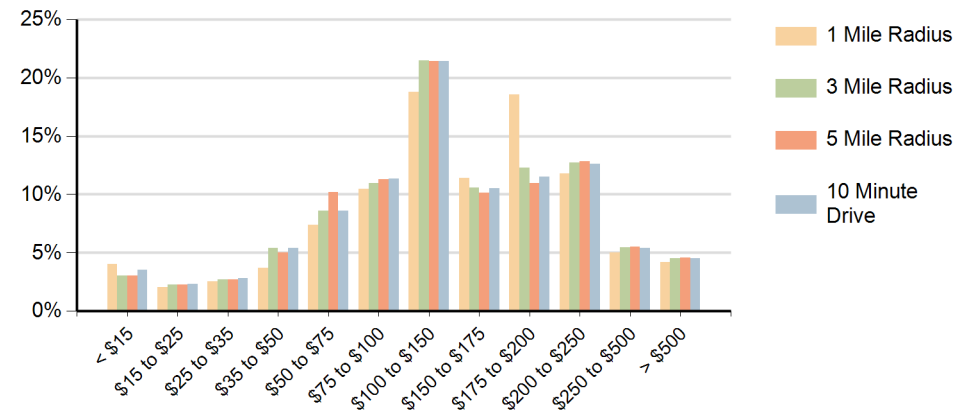


**Hispanic Ethnicity**  
13% Hispanic | 87% Non Hispanic

### Population by Age Range



### Households by Income Range (\$000)



Fox Mill Shopping Center Herndon, Virginia		1 Mile Radius	3 Mile Radius	5 Mile Radius	10 Minute Drive
Population	Current Estimated Population	11,591	113,300	247,188	102,348
	2010 Census Population	10,450	103,035	228,577	93,574
	2000 Census Population	10,440	87,977	194,736	80,735
	Historical Annual Growth 2000 to 2010	0.0%	1.6%	1.6%	1.5%
	Estimated Annual Growth 2010 to 2022	0.8%	0.8%	0.6%	0.7%
	Projected Annual Growth 2022 to 2027	1.1%	1.1%	0.8%	1.0%
Households	Current Estimated Households	4,002	42,693	93,129	39,257
	2010 Census Households	3,610	38,633	85,740	35,584
	2000 Census Households	3,465	31,301	70,957	29,177
	Historical Annual Growth 2000 to 2010	0.4%	2.1%	1.9%	2.0%
	Estimated Annual Growth 2010 to 2022	0.8%	0.8%	0.7%	0.8%
	Projected Annual Growth 2022 to 2027	1.0%	1.1%	0.9%	1.1%
	Population per Household	2.9	2.6	2.7	2.6
Ethnic	Hispanic or Latino Population	11%	13%	14%	13%
	Non Hispanic or Latino Population	89%	87%	86%	87%
Race	White	66.0%	60.2%	61.3%	60.6%
	Black or African American	7.9%	7.9%	7.5%	8.3%
	Asian & Pacific Islander	15.7%	22.3%	21.4%	20.9%
	Other Races	10.4%	9.6%	9.8%	10.1%

This report was produced using data from private and government sources deemed to be reliable and is herein provided without representation or warranty.