

**Ashburn Farm Village Center**  
Ashburn, Virginia

**1 Mile Radius**

**3 Mile Radius**

**5 Mile Radius**

**10 Minute Drive**

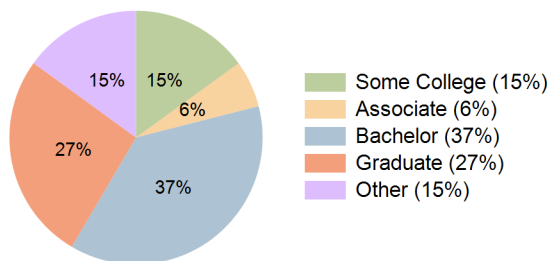
### Current Year Demographics

Current Population	13,998	89,044	179,087	89,194
Total Daytime Pop	15,218	76,361	183,627	87,716
Workplace Pop	6,193	34,404	99,942	47,880
Average Household Income	\$151,456	\$155,869	\$148,728	\$150,191
Median Household Income	\$132,029	\$133,595	\$125,997	\$128,275
Total Households	4,624	29,952	60,688	30,223
Median Home Value	\$649,578	\$695,313	\$662,005	\$665,702
Bachelors Degree	34.8%	38.4%	36.6%	37.5%
Graduate Degree	27.2%	27.7%	26.0%	26.5%
Total Consumer Spending/Capita (Weekly)	\$377	\$378	\$379	\$377

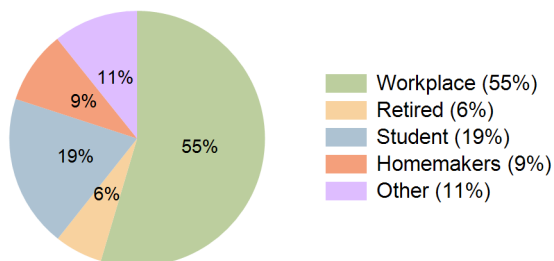
### 2023 Demographic Projections

Projected Population	14,748	103,314	204,024	101,841
Projected 5 Year Annual Growth Rate (Pop)	1.0%	3.0%	2.6%	2.7%
Projected Households	4,872	34,635	68,897	34,402
Projected 5 Year Annual Growth Rate (HH)	1.1%	2.9%	2.6%	2.6%

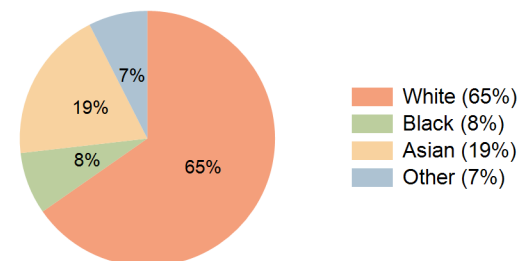
**Education (10 Minute Drive)**



**Daytime Population (10 Minute Drive)**

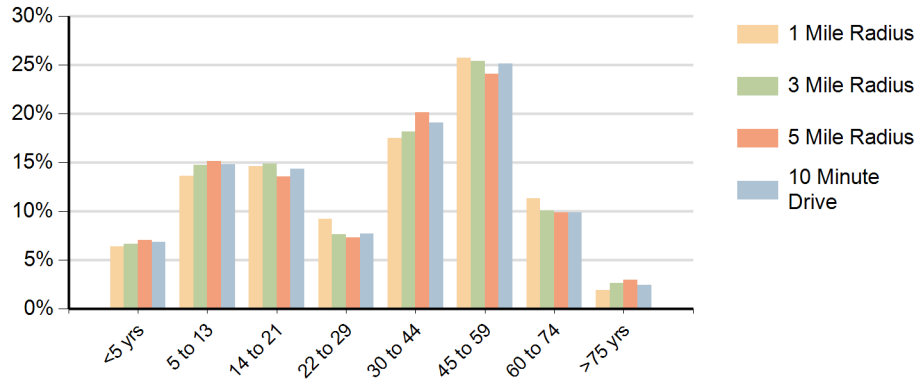


**Race (10 Minute Drive)**

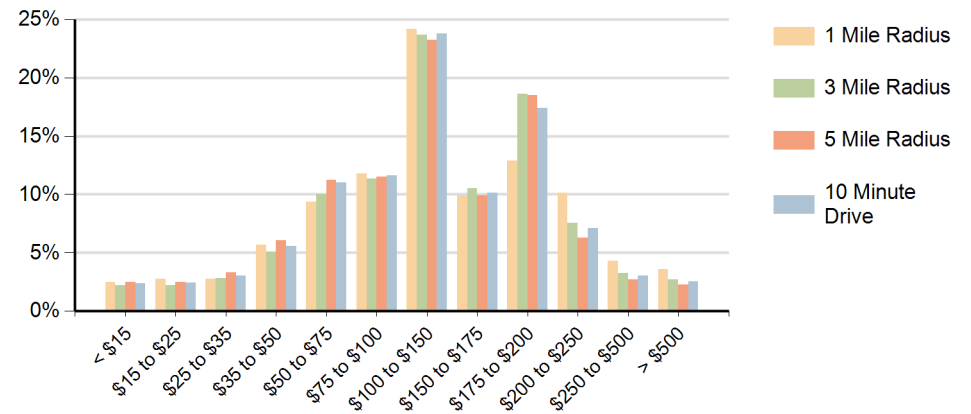


**Hispanic Ethnicity**  
10% Hispanic | 90% Non Hispanic

### Population by Age Range



### Households by Income Range (\$000)



Ashburn Farm Village Center Ashburn, Virginia		1 Mile Radius	3 Mile Radius	5 Mile Radius	10 Minute Drive
Population	Current Estimated Population	13,998	89,044	179,087	89,194
	2010 Census Population	11,923	66,196	133,715	68,026
	2000 Census Population	9,281	30,880	62,465	34,632
	Historical Annual Growth 2000 to 2010	2.5%	7.9%	7.9%	7.0%
	Estimated Annual Growth 2010 to 2018	2.0%	3.7%	3.6%	3.3%
	Projected Annual Growth 2018 to 2023	1.0%	3.0%	2.6%	2.7%
Households	Current Estimated Households	4,624	29,952	60,688	30,223
	2010 Census Households	3,934	22,381	45,648	23,215
	2000 Census Households	3,175	10,169	21,927	11,631
	Historical Annual Growth 2000 to 2010	2.2%	8.2%	7.6%	7.2%
	Estimated Annual Growth 2010 to 2018	2.0%	3.6%	3.5%	3.2%
	Projected Annual Growth 2018 to 2023	1.1%	2.9%	2.6%	2.6%
	Population per Household	3.0	3.0	2.9	3.0
Ethnic	Hispanic or Latino Population	10%	9%	12%	10%
	Non Hispanic or Latino Population	90%	91%	88%	90%
Race	White	70.2%	66.0%	62.9%	65.3%
	Black or African American	8.2%	7.3%	7.8%	7.9%
	Asian & Pacific Islander	14.0%	19.7%	20.6%	19.3%
	Other Races	7.6%	6.9%	8.7%	7.5%