

Mercer Square Doylestown, Pennsylvania	1 Mile Radius	3 Mile Radius	5 Mile Radius	10 Minute Drive
---	---------------	---------------	---------------	-----------------

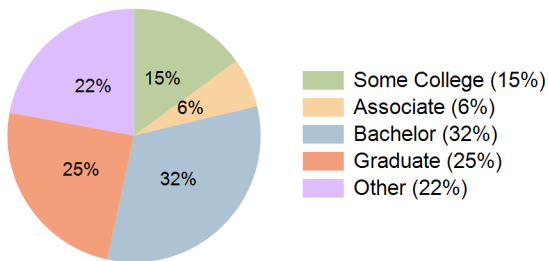
### Current Year Demographics

Current Population	9,669	38,078	79,522	60,159
Total Daytime Pop	19,172	49,855	87,382	69,622
Workplace Pop	11,182	24,806	35,834	30,870
Average Household Income	\$117,357	\$151,639	\$159,039	\$156,718
Median Household Income	\$85,627	\$113,830	\$122,065	\$118,486
Total Households	4,246	14,451	28,393	21,946
Median Home Value	\$568,702	\$624,400	\$620,111	\$625,029
Bachelors Degree	29.1%	32.1%	32.7%	32.1%
Graduate Degree	22.8%	24.8%	24.3%	24.5%
Total Consumer Spending/Capita (Weekly)	\$424	\$435	\$439	\$437

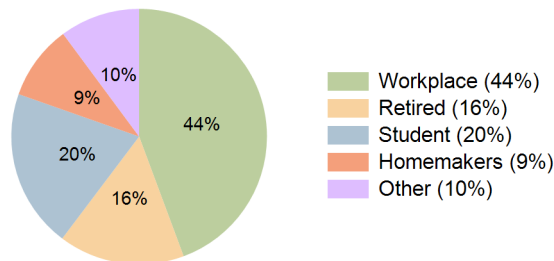
### 2027 Demographic Projections

Projected Population	9,770	38,532	80,431	60,841
Projected 5 Year Annual Growth Rate (Pop)	0.2%	0.2%	0.2%	0.2%
Projected Households	4,296	14,623	28,711	22,186
Projected 5 Year Annual Growth Rate (HH)	0.2%	0.2%	0.2%	0.2%

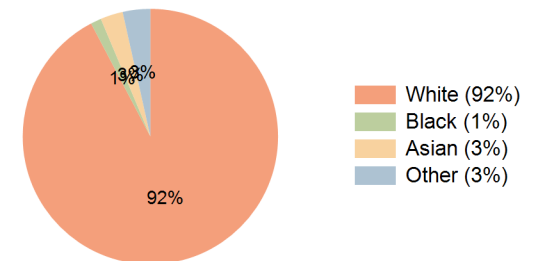
Education (10 Minute Drive)



Daytime Population (10 Minute Drive)

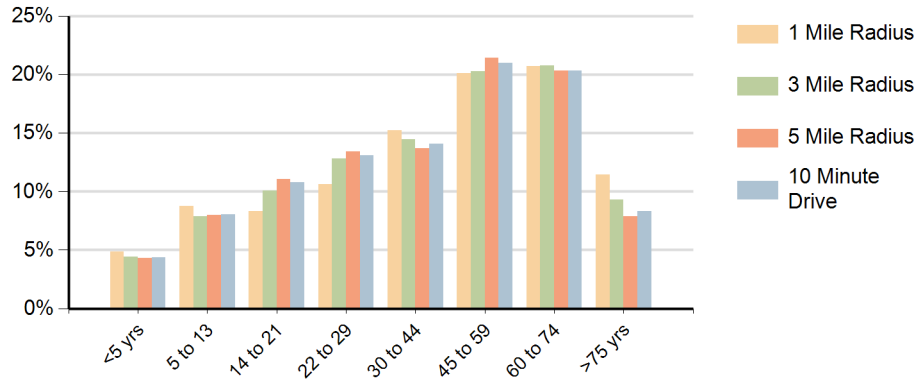


Race (10 Minute Drive)

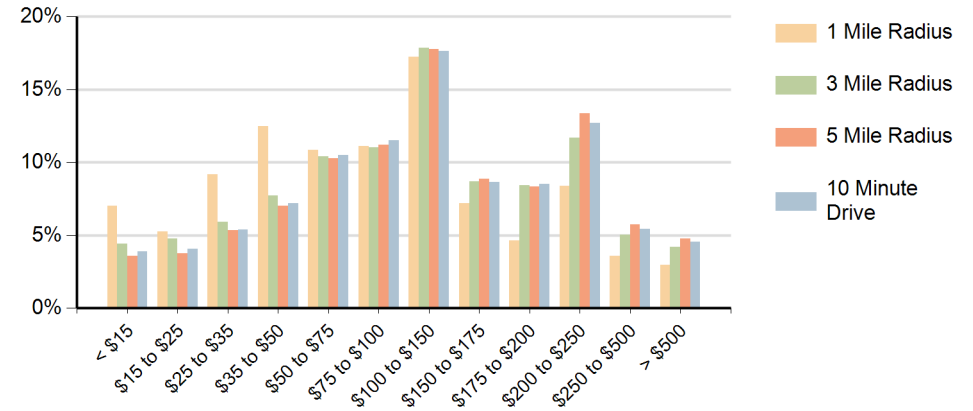


**Hispanic Ethnicity**  
4% Hispanic | 96% Non Hispanic

### Population by Age Range



### Households by Income Range (\$000)



Mercer Square Doylestown, Pennsylvania		1 Mile Radius	3 Mile Radius	5 Mile Radius	10 Minute Drive
Population	Current Estimated Population	9,669	38,078	79,522	60,159
	2010 Census Population	9,350	36,401	75,599	57,240
	2000 Census Population	9,382	35,119	68,490	52,996
	Historical Annual Growth 2000 to 2010	0.0%	0.4%	1.0%	0.8%
	Estimated Annual Growth 2010 to 2022	0.3%	0.4%	0.4%	0.4%
	Projected Annual Growth 2022 to 2027	0.2%	0.2%	0.2%	0.2%
Households	Current Estimated Households	4,246	14,451	28,393	21,946
	2010 Census Households	4,080	13,754	26,927	20,829
	2000 Census Households	4,018	13,040	24,194	19,077
	Historical Annual Growth 2000 to 2010	0.2%	0.5%	1.1%	0.9%
	Estimated Annual Growth 2010 to 2022	0.3%	0.4%	0.4%	0.4%
	Projected Annual Growth 2022 to 2027	0.2%	0.2%	0.2%	0.2%
	Population per Household	2.2	2.5	2.7	2.6
Ethnic	Hispanic or Latino Population	3%	4%	3%	4%
	Non Hispanic or Latino Population	97%	96%	97%	96%
Race	White	93.8%	93.0%	91.9%	92.3%
	Black or African American	1.2%	1.3%	1.6%	1.3%
	Asian & Pacific Islander	2.3%	2.4%	3.3%	2.9%
	Other Races	2.7%	3.3%	3.2%	3.5%