

Stefko Blvd Shopping Center
Bethlehem, Pennsylvania

1 Mile Radius

3 Mile Radius

5 Mile Radius

10 Minute Drive

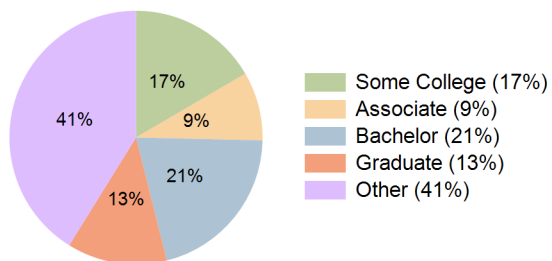
Current Year Demographics

Current Population	15,925	90,861	158,855	77,813
Total Daytime Pop	17,487	130,367	202,951	113,720
Workplace Pop	8,411	48,950	85,656	42,603
Average Household Income	\$89,343	\$93,712	\$95,661	\$94,529
Median Household Income	\$65,483	\$67,913	\$70,701	\$67,895
Total Households	6,507	34,912	61,868	30,153
Median Home Value	\$245,177	\$280,169	\$289,594	\$281,503
Bachelors Degree	14.8%	20.7%	20.9%	20.7%
Graduate Degree	9.5%	13.2%	13.1%	12.8%
Total Consumer Spending/Capita (Weekly)	\$388	\$394	\$395	\$394

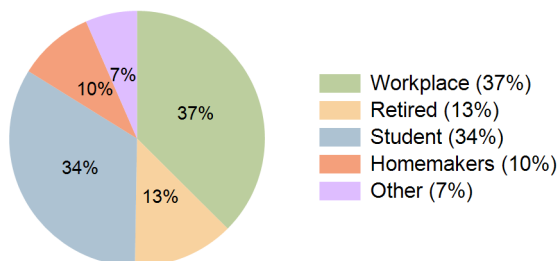
2027 Demographic Projections

Projected Population	16,091	92,051	160,946	78,740
Projected 5 Year Annual Growth Rate (Pop)	0.2%	0.3%	0.3%	0.2%
Projected Households	6,581	35,372	62,672	30,513
Projected 5 Year Annual Growth Rate (HH)	0.2%	0.3%	0.3%	0.2%

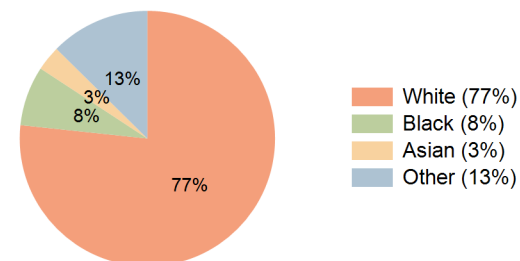
Education (10 Minute Drive)



Daytime Population (10 Minute Drive)

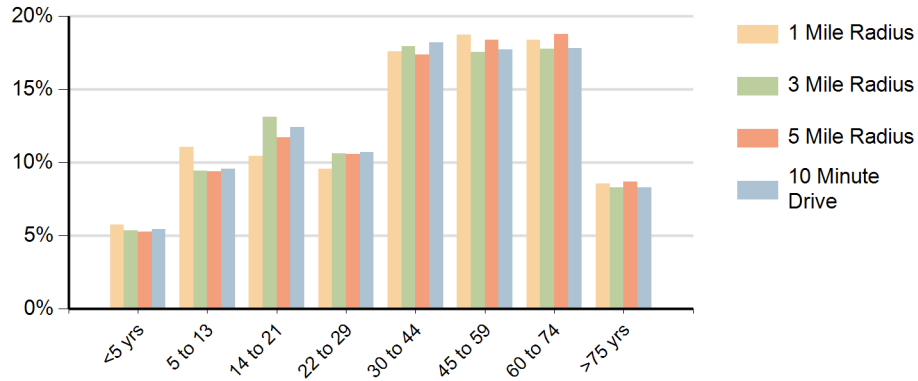


Race (10 Minute Drive)

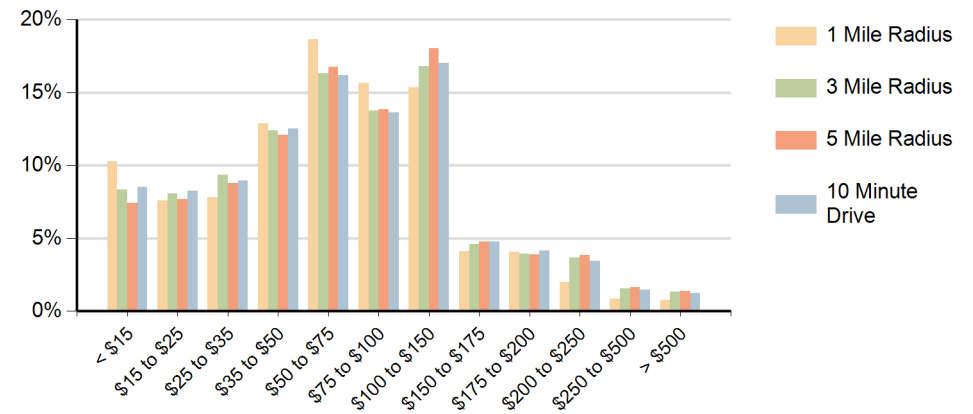


Hispanic Ethnicity
23% Hispanic | 77% Non Hispanic

Population by Age Range



Households by Income Range (\$000)



Stefko Blvd Shopping Center Bethlehem, Pennsylvania		1 Mile Radius	3 Mile Radius	5 Mile Radius	10 Minute Drive
Population	Current Estimated Population	15,925	90,861	158,855	77,813
	2010 Census Population	15,705	86,235	150,908	74,316
	2000 Census Population	15,089	80,380	140,730	70,616
	Historical Annual Growth 2000 to 2010	0.4%	0.7%	0.7%	0.5%
	Estimated Annual Growth 2010 to 2022	0.1%	0.4%	0.4%	0.4%
	Projected Annual Growth 2022 to 2027	0.2%	0.3%	0.3%	0.2%
Households	Current Estimated Households	6,507	34,912	61,868	30,153
	2010 Census Households	6,390	33,072	58,713	28,750
	2000 Census Households	6,286	30,651	54,687	26,869
	Historical Annual Growth 2000 to 2010	0.2%	0.8%	0.7%	0.7%
	Estimated Annual Growth 2010 to 2022	0.1%	0.4%	0.4%	0.4%
	Projected Annual Growth 2022 to 2027	0.2%	0.3%	0.3%	0.2%
	Population per Household	2.4	2.4	2.4	2.4
Ethnic	Hispanic or Latino Population	30%	22%	19%	23%
	Non Hispanic or Latino Population	70%	78%	81%	77%
Race	White	74.9%	77.3%	79.4%	76.7%
	Black or African American	9.7%	7.3%	6.4%	7.6%
	Asian & Pacific Islander	1.2%	3.3%	3.4%	3.2%
	Other Races	14.2%	12.1%	10.7%	12.6%