

Allen Street Shopping Center
Allentown, Pennsylvania

1 Mile Radius

3 Mile Radius

5 Mile Radius

10 Minute Drive

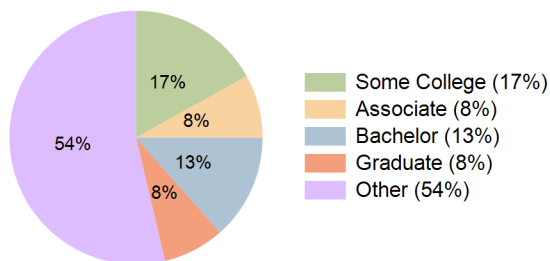
Current Year Demographics

Current Population	45,770	140,757	227,573	136,152
Total Daytime Pop	45,658	161,065	255,612	162,712
Workplace Pop	17,190	73,257	119,643	76,990
Average Household Income	\$47,856	\$57,823	\$65,805	\$60,741
Median Household Income	\$35,678	\$42,791	\$49,692	\$43,967
Total Households	16,230	52,133	87,813	50,534
Median Home Value	\$128,867	\$166,567	\$183,949	\$175,686
Bachelors Degree	10.0%	12.4%	14.9%	13.4%
Graduate Degree	4.4%	6.9%	8.6%	7.8%
Total Consumer Spending/Capita (Weekly)	\$299	\$311	\$321	\$313

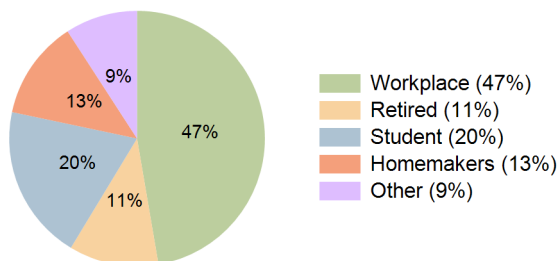
2023 Demographic Projections

Projected Population	46,208	143,174	231,645	138,646
Projected 5 Year Annual Growth Rate (Pop)	0.2%	0.3%	0.4%	0.4%
Projected Households	16,413	53,118	89,491	51,550
Projected 5 Year Annual Growth Rate (HH)	0.2%	0.4%	0.4%	0.4%

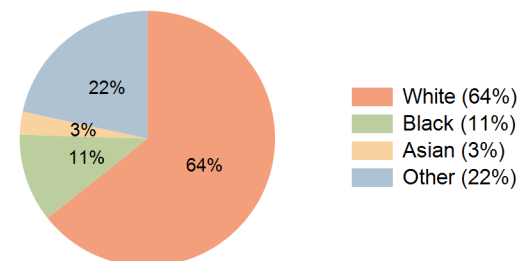
Education (10 Minute Drive)



Daytime Population (10 Minute Drive)

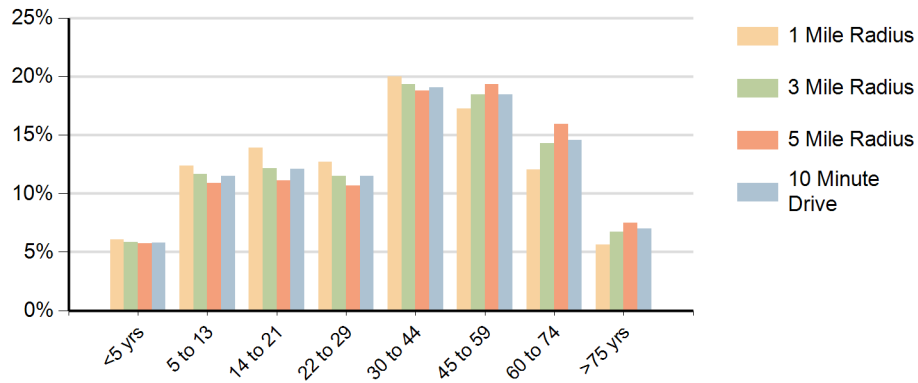


Race (10 Minute Drive)

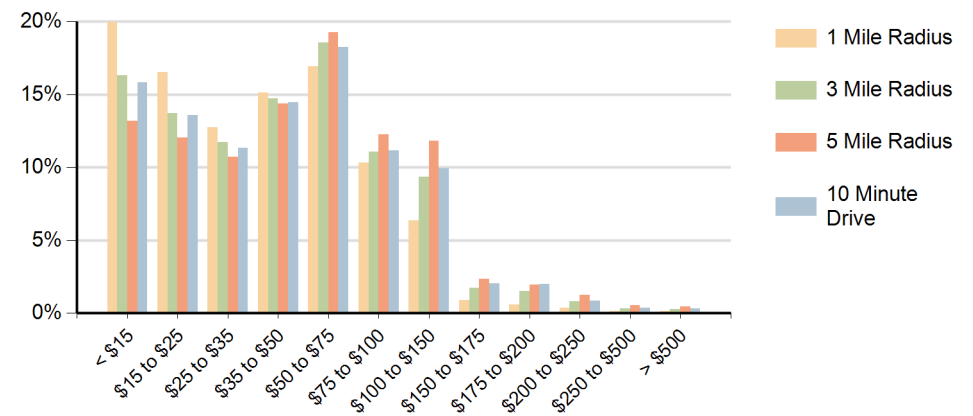


Hispanic Ethnicity
36% Hispanic | 64% Non Hispanic

Population by Age Range



Households by Income Range (\$000)



Allen Street Shopping Center Allentown, Pennsylvania		1 Mile Radius	3 Mile Radius	5 Mile Radius	10 Minute Drive
Population	Current Estimated Population	45,770	140,757	227,573	136,152
	2010 Census Population	45,353	137,198	221,225	132,452
	2000 Census Population	40,541	125,032	205,317	120,781
	Historical Annual Growth 2000 to 2010	1.1%	0.9%	0.7%	0.9%
	Estimated Annual Growth 2010 to 2018	0.1%	0.3%	0.3%	0.3%
	Projected Annual Growth 2018 to 2023	0.2%	0.3%	0.4%	0.4%
Households	Current Estimated Households	16,230	52,133	87,813	50,534
	2010 Census Households	16,074	50,751	85,239	49,093
	2000 Census Households	16,299	49,496	82,078	47,602
	Historical Annual Growth 2000 to 2010	-0.1%	0.3%	0.4%	0.3%
	Estimated Annual Growth 2010 to 2018	0.1%	0.3%	0.4%	0.4%
	Projected Annual Growth 2018 to 2023	0.2%	0.4%	0.4%	0.4%
	Population per Household	2.7	2.6	2.5	2.6
Ethnic	Hispanic or Latino Population	46%	38%	28%	36%
	Non Hispanic or Latino Population	54%	62%	72%	64%
Race	White	55.4%	63.4%	71.9%	64.3%
	Black or African American	14.2%	11.5%	8.8%	11.2%
	Asian & Pacific Islander	2.1%	2.7%	2.8%	2.9%
	Other Races	28.3%	22.4%	16.5%	21.6%