

Rockford Road Plaza
Plymouth, Minnesota

1 Mile Radius

3 Mile Radius

5 Mile Radius

10 Minute Drive

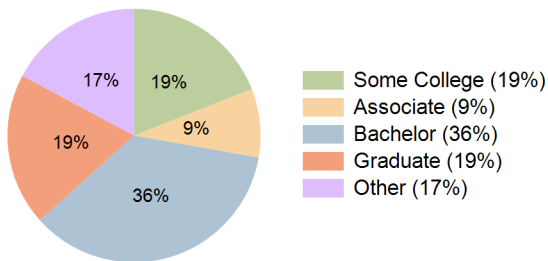
Current Year Demographics

Current Population	7,332	71,391	186,907	101,522
Total Daytime Pop	7,914	92,290	253,739	144,449
Workplace Pop	5,777	58,374	154,610	89,832
Average Household Income	\$141,280	\$116,290	\$107,668	\$115,929
Median Household Income	\$107,492	\$87,684	\$79,336	\$87,136
Total Households	2,844	29,336	76,222	41,380
Median Home Value	\$456,975	\$393,031	\$355,315	\$387,604
Bachelors Degree	39.5%	36.1%	32.6%	35.6%
Graduate Degree	21.7%	20.2%	17.5%	19.4%
Total Consumer Spending/Capita (Weekly)	\$412	\$394	\$385	\$393

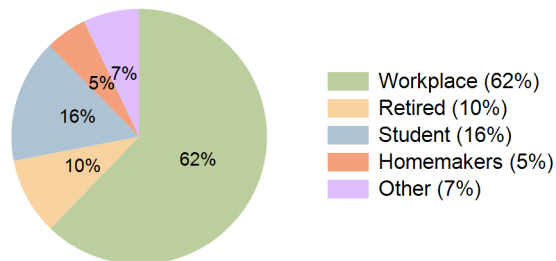
2023 Demographic Projections

Projected Population	7,530	75,562	194,713	106,800
Projected 5 Year Annual Growth Rate (Pop)	0.5%	1.1%	0.8%	1.0%
Projected Households	2,919	30,998	79,318	43,474
Projected 5 Year Annual Growth Rate (HH)	0.5%	1.1%	0.8%	1.0%

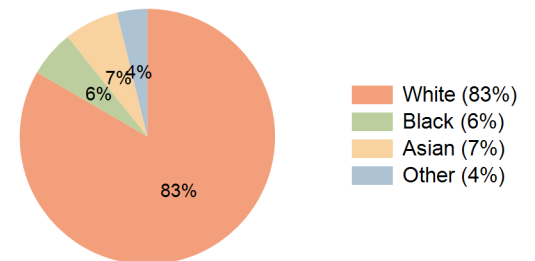
Education (10 Minute Drive)



Daytime Population (10 Minute Drive)

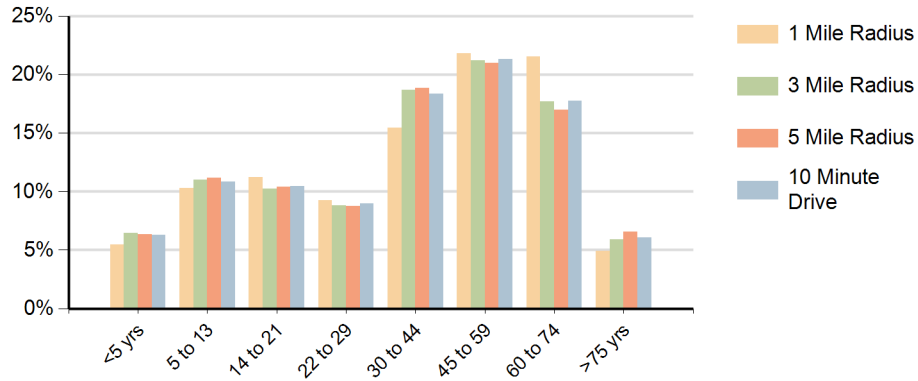


Race (10 Minute Drive)

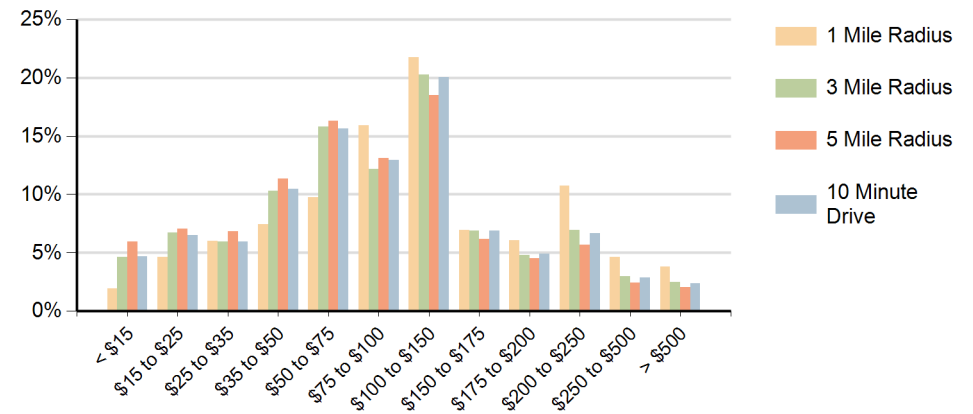


Hispanic Ethnicity
4% Hispanic | 96% Non Hispanic

Population by Age Range



Households by Income Range (\$000)



Rockford Road Plaza Plymouth, Minnesota		1 Mile Radius	3 Mile Radius	5 Mile Radius	10 Minute Drive
Population	Current Estimated Population	7,332	71,391	186,907	101,522
	2010 Census Population	6,748	63,413	169,485	91,028
	2000 Census Population	6,923	58,910	159,259	86,009
	Historical Annual Growth 2000 to 2010	-0.3%	0.7%	0.6%	0.6%
	Estimated Annual Growth 2010 to 2018	1.0%	1.4%	1.2%	1.3%
	Projected Annual Growth 2018 to 2023	0.5%	1.1%	0.8%	1.0%
Households	Current Estimated Households	2,844	29,336	76,222	41,380
	2010 Census Households	2,615	26,153	69,251	37,215
	2000 Census Households	2,462	22,828	62,818	33,092
	Historical Annual Growth 2000 to 2010	0.6%	1.4%	1.0%	1.2%
	Estimated Annual Growth 2010 to 2018	1.0%	1.4%	1.2%	1.3%
	Projected Annual Growth 2018 to 2023	0.5%	1.1%	0.8%	1.0%
	Population per Household	2.6	2.4	2.4	2.4
Ethnic	Hispanic or Latino Population	2%	3%	4%	4%
	Non Hispanic or Latino Population	98%	97%	96%	96%
Race	White	87.9%	82.5%	81.4%	83.4%
	Black or African American	4.2%	6.0%	7.8%	5.9%
	Asian & Pacific Islander	5.1%	7.8%	6.3%	6.9%
	Other Races	2.7%	3.7%	4.4%	3.8%