

Roscoe Square Chicago, Illinois	1 Mile Radius	3 Mile Radius	5 Mile Radius	10 Minute Drive
------------------------------------	---------------	---------------	---------------	-----------------

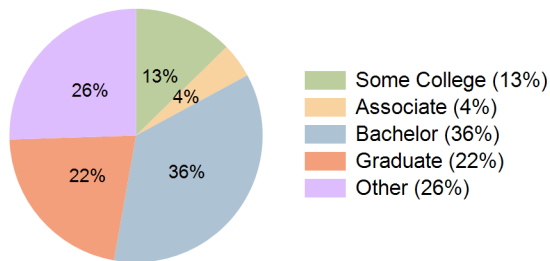
Current Year Demographics

Current Population	48,445	610,056	1,229,634	506,419
Total Daytime Pop	74,896	543,685	1,367,871	429,621
Workplace Pop	15,203	196,848	665,202	170,836
Average Household Income	\$131,034	\$102,126	\$96,331	\$107,060
Median Household Income	\$90,772	\$70,256	\$64,654	\$74,846
Total Households	20,750	269,349	529,004	226,868
Median Home Value	\$547,124	\$435,113	\$396,419	\$457,303
Bachelors Degree	38.4%	33.6%	29.4%	35.7%
Graduate Degree	23.2%	20.9%	19.2%	21.7%
Total Consumer Spending/Capita (Weekly)	\$372	\$350	\$345	\$354

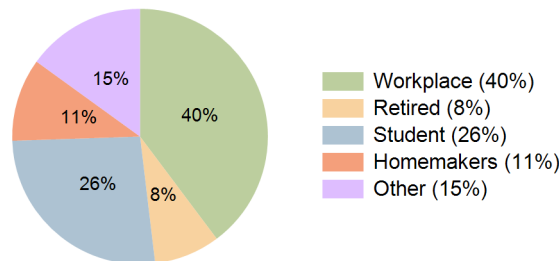
2023 Demographic Projections

Projected Population	48,440	610,118	1,236,521	507,040
Projected 5 Year Annual Growth Rate (Pop)	0.0%	0.0%	0.1%	0.0%
Projected Households	20,743	269,412	534,364	227,222
Projected 5 Year Annual Growth Rate (HH)	0.0%	0.0%	0.2%	0.0%

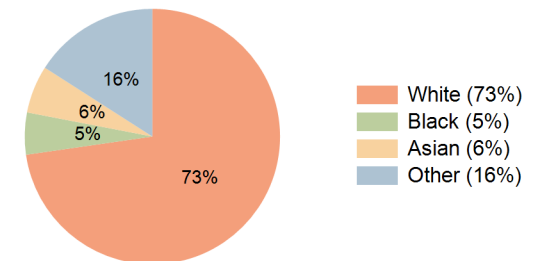
Education (10 Minute Drive)



Daytime Population (10 Minute Drive)

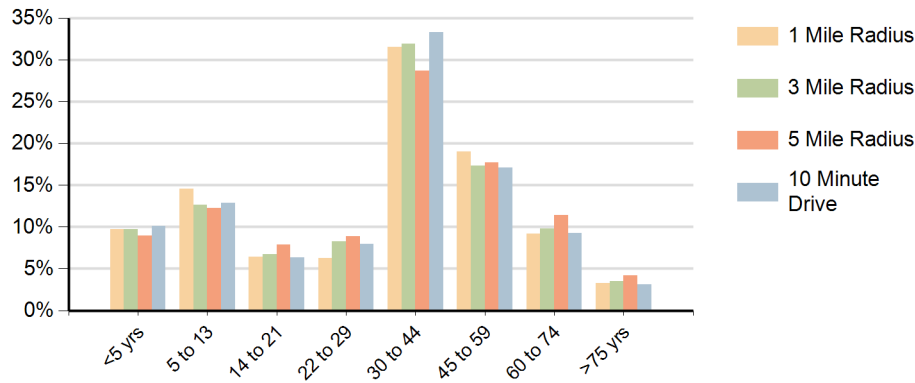


Race (10 Minute Drive)

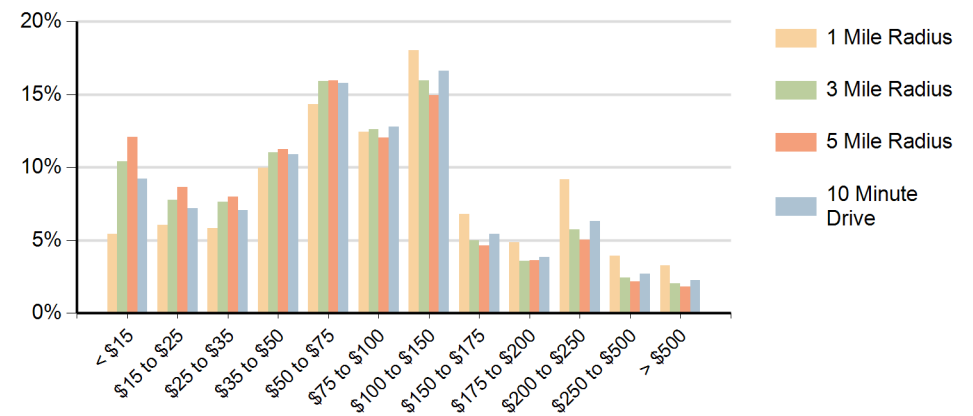


Hispanic Ethnicity
31% Hispanic | 69% Non Hispanic

Population by Age Range



Households by Income Range (\$000)



Roscoe Square Chicago, Illinois		1 Mile Radius	3 Mile Radius	5 Mile Radius	10 Minute Drive
Population	Current Estimated Population	48,445	610,056	1,229,634	506,419
	2010 Census Population	47,043	592,805	1,187,637	491,079
	2000 Census Population	47,611	640,820	1,257,763	520,216
	Historical Annual Growth 2000 to 2010	-0.1%	-0.8%	-0.6%	-0.6%
	Estimated Annual Growth 2010 to 2018	0.4%	0.3%	0.4%	0.4%
	Projected Annual Growth 2018 to 2023	0.0%	0.0%	0.1%	0.0%
Households	Current Estimated Households	20,750	269,349	529,004	226,868
	2010 Census Households	20,144	261,897	508,188	219,912
	2000 Census Households	19,706	267,653	508,846	219,557
	Historical Annual Growth 2000 to 2010	0.2%	-0.2%	0.0%	0.0%
	Estimated Annual Growth 2010 to 2018	0.4%	0.3%	0.5%	0.4%
	Projected Annual Growth 2018 to 2023	0.0%	0.0%	0.2%	0.0%
Population per Household		2.3	2.2	2.3	2.2
Ethnic	Hispanic or Latino Population	28%	33%	30%	31%
	Non Hispanic or Latino Population	72%	67%	70%	69%
Race	White	77.6%	68.9%	61.3%	72.7%
	Black or African American	3.0%	6.6%	14.3%	5.3%
	Asian & Pacific Islander	4.9%	6.7%	7.6%	6.0%
	Other Races	14.5%	17.9%	16.9%	15.9%