

Riverside Square & River's Edge
Chicago, Illinois

1 Mile Radius

3 Mile Radius

5 Mile Radius

10 Minute Drive

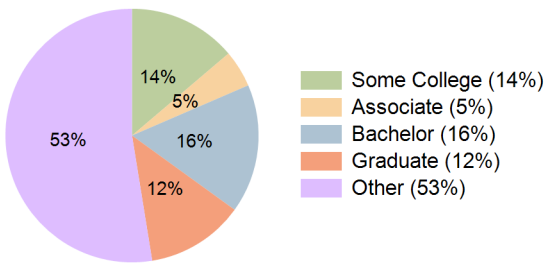
Current Year Demographics

Current Population	31,514	373,112	964,494	274,544
Total Daytime Pop	27,484	453,746	1,718,397	397,661
Workplace Pop	12,708	176,098	907,470	184,945
Average Household Income	\$58,050	\$65,041	\$80,099	\$72,418
Median Household Income	\$43,714	\$42,029	\$49,182	\$46,572
Total Households	11,130	128,610	365,365	97,148
Median Home Value	\$288,912	\$293,187	\$311,066	\$321,746
Bachelors Degree	15.8%	14.3%	18.3%	16.4%
Graduate Degree	7.6%	10.8%	14.2%	12.5%
Total Consumer Spending/Capita (Weekly)	\$324	\$317	\$324	\$322

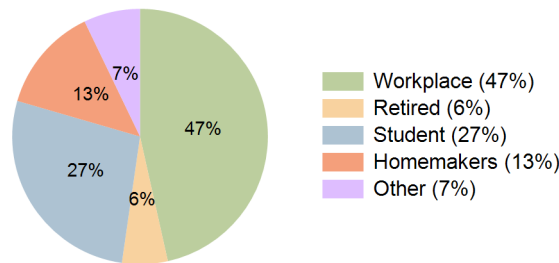
2023 Demographic Projections

Projected Population	32,454	383,225	988,196	282,414
Projected 5 Year Annual Growth Rate (Pop)	0.6%	0.5%	0.5%	0.6%
Projected Households	11,458	133,097	379,270	100,693
Projected 5 Year Annual Growth Rate (HH)	0.6%	0.7%	0.7%	0.7%

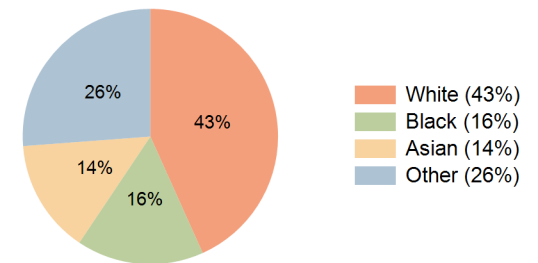
Education (10 Minute Drive)



Daytime Population (10 Minute Drive)

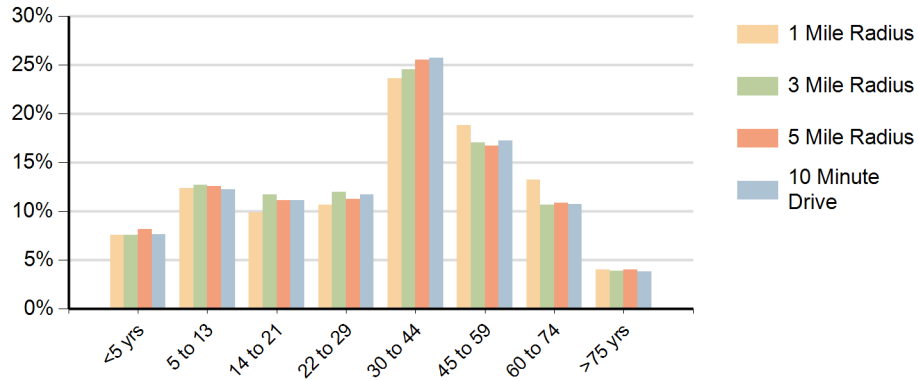


Race (10 Minute Drive)

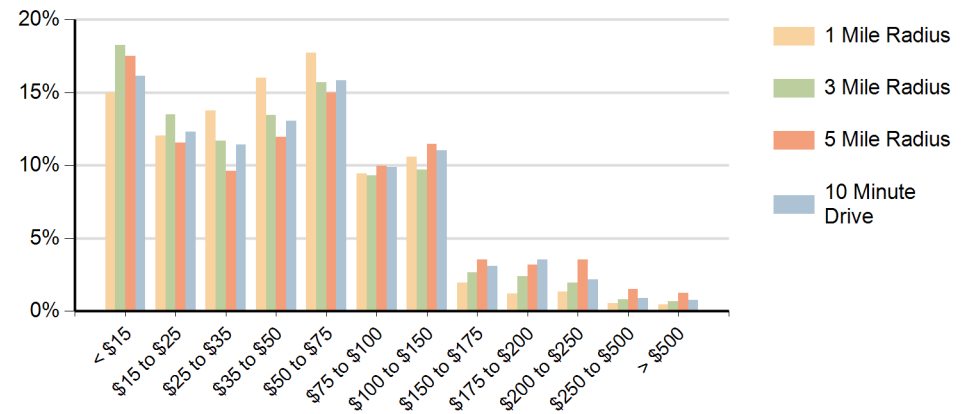


Hispanic Ethnicity
49% Hispanic | 51% Non Hispanic

Population by Age Range



Households by Income Range (\$000)



Riverside Square & River's Edge Chicago, Illinois		1 Mile Radius	3 Mile Radius	5 Mile Radius	10 Minute Drive
Population	Current Estimated Population	31,514	373,112	964,494	274,544
	2010 Census Population	29,161	353,530	914,860	258,846
	2000 Census Population	30,750	382,143	963,294	267,089
	Historical Annual Growth 2000 to 2010	-0.5%	-0.8%	-0.5%	-0.3%
	Estimated Annual Growth 2010 to 2018	0.9%	0.7%	0.6%	0.7%
	Projected Annual Growth 2018 to 2023	0.6%	0.5%	0.5%	0.6%
Households	Current Estimated Households	11,130	128,610	365,365	97,148
	2010 Census Households	10,277	120,408	339,440	90,411
	2000 Census Households	10,575	116,395	324,358	83,119
	Historical Annual Growth 2000 to 2010	-0.3%	0.3%	0.5%	0.8%
	Estimated Annual Growth 2010 to 2018	1.0%	0.8%	0.9%	0.9%
	Projected Annual Growth 2018 to 2023	0.6%	0.7%	0.7%	0.7%
	Population per Household	2.8	2.8	2.6	2.7
Ethnic	Hispanic or Latino Population	48%	48%	37%	49%
	Non Hispanic or Latino Population	52%	52%	63%	51%
Race	White	48.2%	39.3%	39.7%	43.3%
	Black or African American	2.8%	23.5%	32.7%	16.1%
	Asian & Pacific Islander	23.5%	11.2%	7.0%	14.4%
	Other Races	25.5%	26.1%	20.6%	26.2%