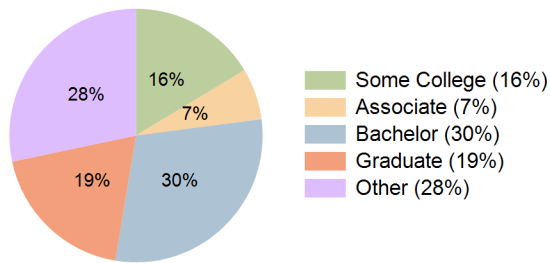


| Civic Center Plaza<br>Niles, Illinois   | 1 Mile Radius | 3 Mile Radius | 5 Mile Radius | 10 Minute Drive |
|---|---------------|---------------|---------------|-----------------|
| <b>Current Year Demographics</b>        |               |               |               |                 |
| Current Population                      | 15,163        | 161,655       | 440,370       | 210,450         |
| Total Daytime Pop                       | 22,874        | 193,580       | 595,650       | 261,154         |
| Workplace Pop                           | 15,990        | 103,515       | 312,763       | 146,951         |
| Average Household Income                | \$104,846     | \$123,938     | \$116,474     | \$120,172       |
| Median Household Income                 | \$81,891      | \$93,276      | \$84,644      | \$88,877        |
| Total Households                        | 6,029         | 61,878        | 169,604       | 80,717          |
| Median Home Value                       | \$390,286     | \$463,945     | \$433,928     | \$450,395       |
| Bachelors Degree                        | 25.9%         | 30.2%         | 29.0%         | 29.7%           |
| Graduate Degree                         | 13.3%         | 19.5%         | 18.9%         | 19.1%           |
| Total Consumer Spending/Capita (Weekly) | \$402         | \$410         | \$406         | \$408           |

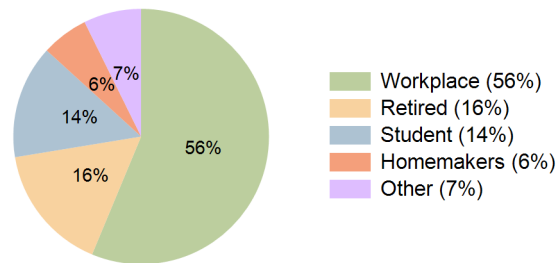
### 2027 Demographic Projections

|   |        |         |         |         |
|---|--------|---------|---------|---------|
| Projected Population                      | 14,806 | 158,876 | 432,781 | 206,988 |
| Projected 5 Year Annual Growth Rate (Pop) | -0.5%  | -0.3%   | -0.3%   | -0.3%   |
| Projected Households                      | 5,885  | 60,795  | 166,636 | 79,360  |
| Projected 5 Year Annual Growth Rate (HH)  | -0.5%  | -0.4%   | -0.4%   | -0.3%   |

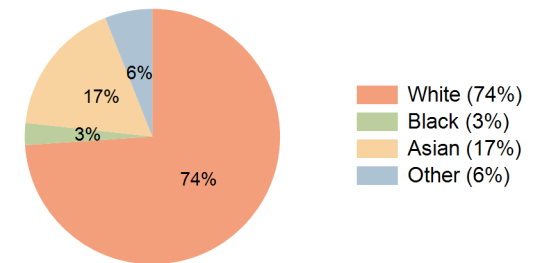
Education (10 Minute Drive)



Daytime Population (10 Minute Drive)

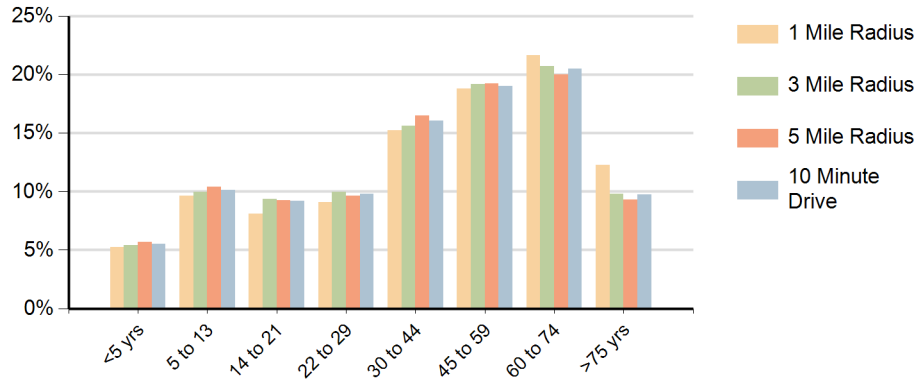


Race (10 Minute Drive)

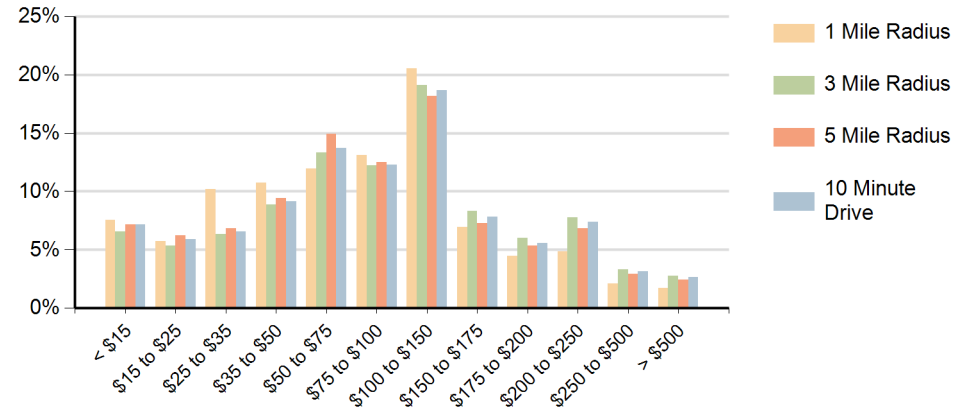


**Hispanic Ethnicity**  
9% Hispanic | 91% Non Hispanic

### Population by Age Range



### Households by Income Range (\$000)



| Civic Center Plaza<br>Niles, Illinois |                                       | 1 Mile Radius | 3 Mile Radius | 5 Mile Radius | 10 Minute Drive |
|---------------------------------------|---------------------------------------|---------------|---------------|---------------|-----------------|
| Population                            | Current Estimated Population          | 15,163        | 161,655       | 440,370       | 210,450         |
|                                       | 2010 Census Population                | 15,586        | 164,259       | 450,170       | 214,925         |
|                                       | 2000 Census Population                | 15,403        | 162,521       | 443,261       | 212,809         |
|                                       | Historical Annual Growth 2000 to 2010 | 0.1%          | 0.1%          | 0.2%          | 0.1%            |
|                                       | Estimated Annual Growth 2010 to 2022  | -0.2%         | -0.1%         | -0.2%         | -0.2%           |
|                                       | Projected Annual Growth 2022 to 2027  | -0.5%         | -0.3%         | -0.3%         | -0.3%           |
| Households                            | Current Estimated Households          | 6,029         | 61,878        | 169,604       | 80,717          |
|                                       | 2010 Census Households                | 6,211         | 62,947        | 173,546       | 82,455          |
|                                       | 2000 Census Households                | 6,113         | 62,606        | 173,075       | 82,451          |
|                                       | Historical Annual Growth 2000 to 2010 | 0.2%          | 0.1%          | 0.0%          | 0.0%            |
|                                       | Estimated Annual Growth 2010 to 2022  | -0.2%         | -0.1%         | -0.2%         | -0.2%           |
|                                       | Projected Annual Growth 2022 to 2027  | -0.5%         | -0.4%         | -0.4%         | -0.3%           |
|                                       | Population per Household              | 2.4           | 2.6           | 2.6           | 2.6             |
| Ethnic                                | Hispanic or Latino Population         | 7%            | 9%            | 12%           | 9%              |
|                                       | Non Hispanic or Latino Population     | 93%           | 91%           | 88%           | 91%             |
| Race                                  | White                                 | 80.8%         | 77.2%         | 74.8%         | 73.9%           |
|                                       | Black or African American             | 1.4%          | 2.2%          | 2.9%          | 2.8%            |
|                                       | Asian & Pacific Islander              | 13.5%         | 15.1%         | 14.9%         | 17.3%           |
|                                       | Other Races                           | 4.3%          | 5.5%          | 7.3%          | 6.0%            |