

Mariposa Shopping Center
Santa Clara, California

1 Mile Radius

3 Mile Radius

5 Mile Radius

10 Minute Drive

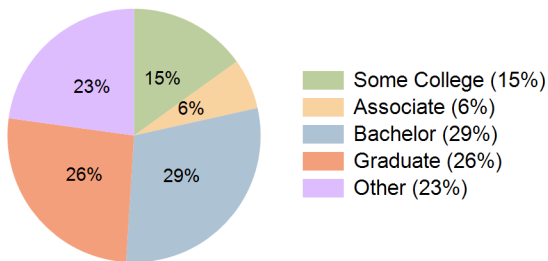
Current Year Demographics

Current Population	30,585	229,794	598,637	339,865
Total Daytime Pop	24,015	293,257	900,225	471,669
Workplace Pop	9,957	158,151	496,453	276,291
Average Household Income	\$143,171	\$139,957	\$145,938	\$137,802
Median Household Income	\$118,112	\$110,460	\$114,477	\$108,878
Total Households	11,884	86,175	227,259	127,559
Median Home Value	\$1,547,777	\$1,580,527	\$1,542,161	\$1,561,307
Bachelors Degree	31.6%	29.8%	29.9%	29.5%
Graduate Degree	25.3%	27.4%	27.8%	26.2%
Total Consumer Spending/Capita (Weekly)	\$423	\$419	\$423	\$417

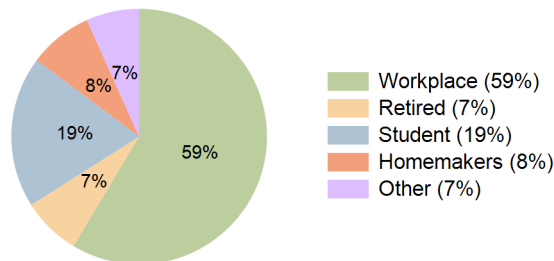
2024 Demographic Projections

Projected Population	34,165	251,270	660,391	372,578
Projected 5 Year Annual Growth Rate (Pop)	2.2%	1.8%	2.0%	1.9%
Projected Households	13,262	94,372	251,790	140,155
Projected 5 Year Annual Growth Rate (HH)	2.2%	1.8%	2.1%	1.9%

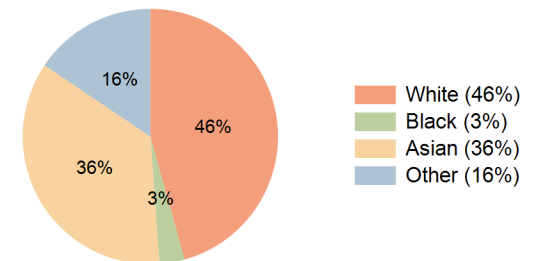
Education (10 Minute Drive)



Daytime Population (10 Minute Drive)



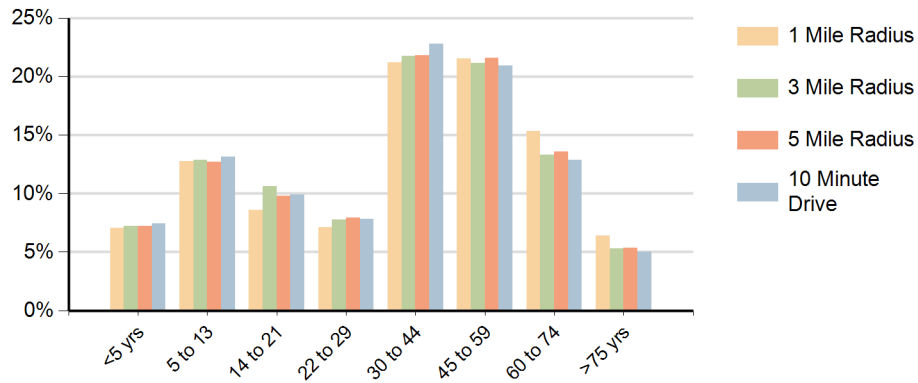
Race (10 Minute Drive)



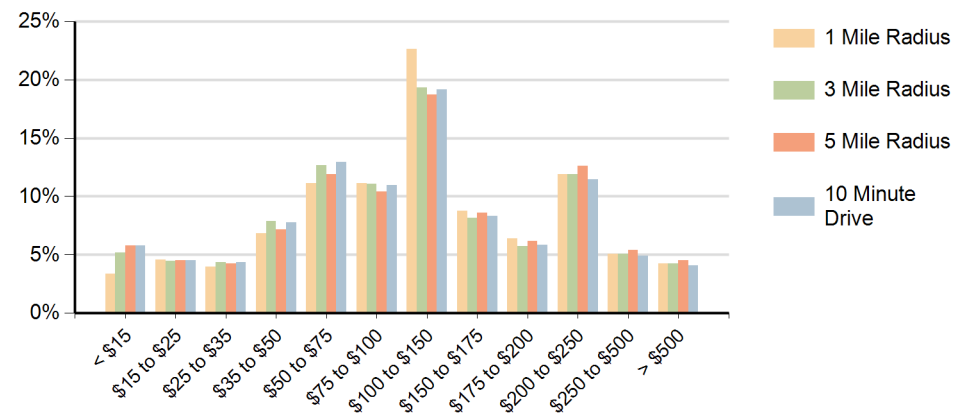
Hispanic Ethnicity

22% Hispanic | 78% Non Hispanic

Population by Age Range



Households by Income Range (\$000)



Mariposa Shopping Center Santa Clara, California		1 Mile Radius	3 Mile Radius	5 Mile Radius	10 Minute Drive
Population	Current Estimated Population	30,585	229,794	598,637	339,865
	2010 Census Population	27,620	216,101	551,404	316,393
	2000 Census Population	26,644	206,096	509,851	292,182
	Historical Annual Growth 2000 to 2010	0.4%	0.5%	0.8%	0.8%
	Estimated Annual Growth 2010 to 2019	1.1%	0.7%	0.9%	0.8%
	Projected Annual Growth 2019 to 2024	2.2%	1.8%	2.0%	1.9%
Households	Current Estimated Households	11,884	86,175	227,259	127,559
	2010 Census Households	10,764	80,785	207,896	118,366
	2000 Census Households	10,770	79,387	195,362	111,904
	Historical Annual Growth 2000 to 2010	0.0%	0.2%	0.6%	0.6%
	Estimated Annual Growth 2010 to 2019	1.1%	0.7%	1.0%	0.8%
	Projected Annual Growth 2019 to 2024	2.2%	1.8%	2.1%	1.9%
	Population per Household	2.6	2.6	2.6	2.6
Ethnic	Hispanic or Latino Population	18%	20%	21%	22%
	Non Hispanic or Latino Population	82%	80%	79%	78%
Race	White	51.1%	46.4%	45.9%	45.7%
	Black or African American	2.7%	3.0%	2.8%	3.2%
	Asian & Pacific Islander	32.9%	36.4%	36.4%	35.6%
	Other Races	13.3%	14.3%	14.9%	15.6%