

Laguna Niguel Plaza
Laguna Niguel, California

1 Mile Radius

3 Mile Radius

5 Mile Radius

10 Minute Drive

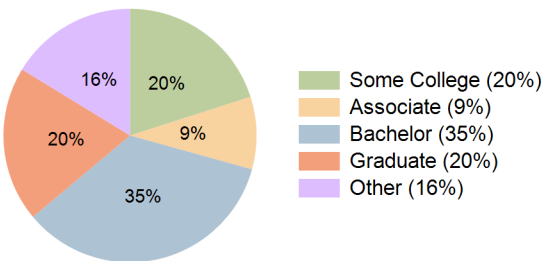
Current Year Demographics

Current Population	14,100	98,769	239,314	137,572
Total Daytime Pop	9,640	81,457	259,852	162,839
Workplace Pop	3,537	27,859	100,801	57,696
Average Household Income	\$144,983	\$143,671	\$135,720	\$130,682
Median Household Income	\$108,746	\$105,035	\$99,340	\$99,721
Total Households	5,369	38,362	92,164	53,720
Median Home Value	\$1,377,231	\$1,212,973	\$1,074,575	\$1,045,626
Bachelors Degree	34.3%	33.6%	32.7%	34.6%
Graduate Degree	22.9%	21.6%	19.8%	19.8%
Total Consumer Spending/Capita (Weekly)	\$400	\$395	\$390	\$389

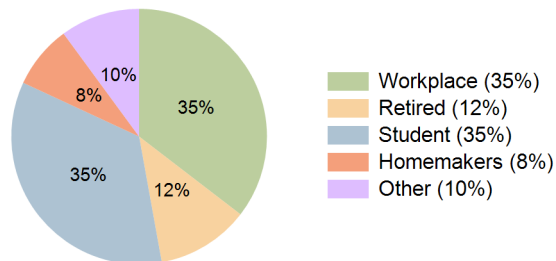
2023 Demographic Projections

Projected Population	14,455	98,947	240,658	138,934
Projected 5 Year Annual Growth Rate (Pop)	0.5%	0.0%	0.1%	0.2%
Projected Households	5,508	38,410	92,633	54,288
Projected 5 Year Annual Growth Rate (HH)	0.5%	0.0%	0.1%	0.2%

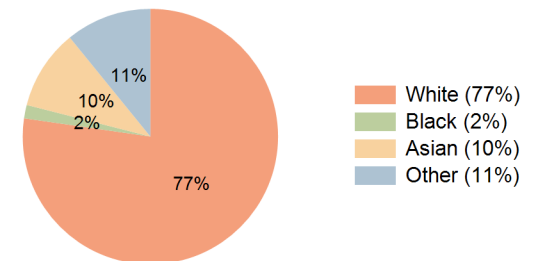
Education (10 Minute Drive)



Daytime Population (10 Minute Drive)



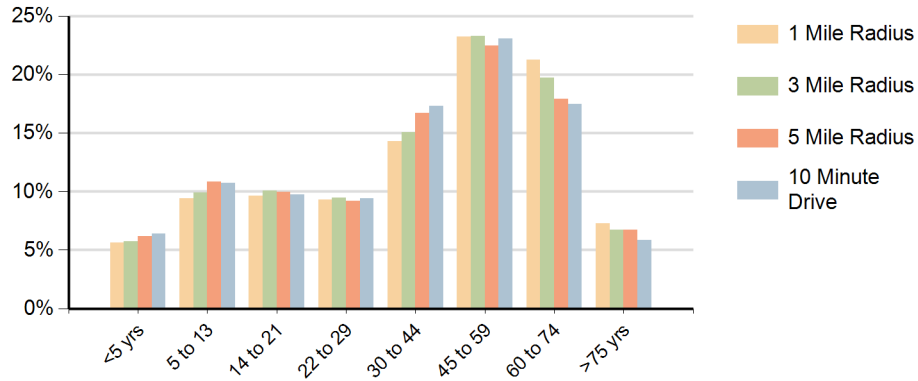
Race (10 Minute Drive)



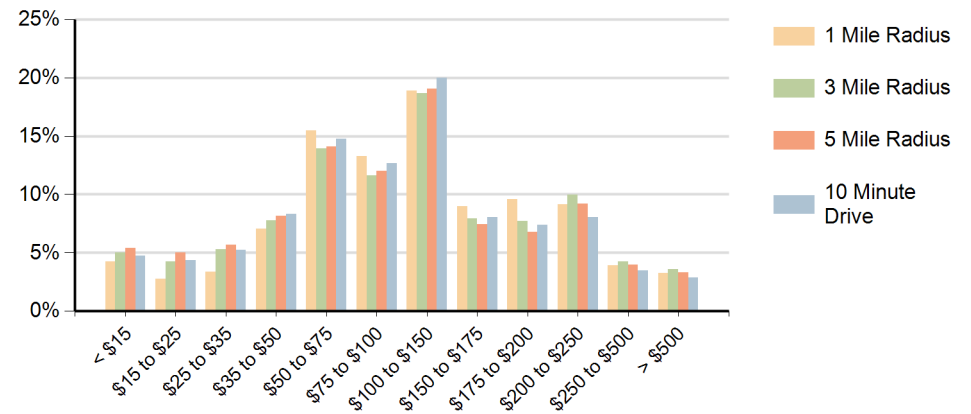
Hispanic Ethnicity

16% Hispanic | 84% Non Hispanic

Population by Age Range



Households by Income Range (\$000)



Laguna Niguel Plaza Laguna Niguel, California		1 Mile Radius	3 Mile Radius	5 Mile Radius	10 Minute Drive
Population	Current Estimated Population	14,100	98,769	239,314	137,572
	2010 Census Population	12,457	95,456	230,650	132,165
	2000 Census Population	13,100	93,230	210,290	125,016
	Historical Annual Growth 2000 to 2010	-0.5%	0.2%	0.9%	0.6%
	Estimated Annual Growth 2010 to 2018	1.5%	0.4%	0.4%	0.5%
	Projected Annual Growth 2018 to 2023	0.5%	0.0%	0.1%	0.2%
Households	Current Estimated Households	5,369	38,362	92,164	53,720
	2010 Census Households	4,730	37,044	88,738	51,417
	2000 Census Households	4,851	36,134	81,924	48,584
	Historical Annual Growth 2000 to 2010	-0.3%	0.2%	0.8%	0.6%
	Estimated Annual Growth 2010 to 2018	1.5%	0.4%	0.5%	0.5%
	Projected Annual Growth 2018 to 2023	0.5%	0.0%	0.1%	0.2%
	Population per Household	2.6	2.6	2.6	2.5
Ethnic	Hispanic or Latino Population	13%	16%	19%	16%
	Non Hispanic or Latino Population	87%	84%	81%	84%
Race	White	80.9%	79.6%	78.2%	77.3%
	Black or African American	2.0%	1.4%	1.4%	1.7%
	Asian & Pacific Islander	8.1%	8.5%	8.6%	10.1%
	Other Races	9.0%	10.5%	11.8%	10.9%