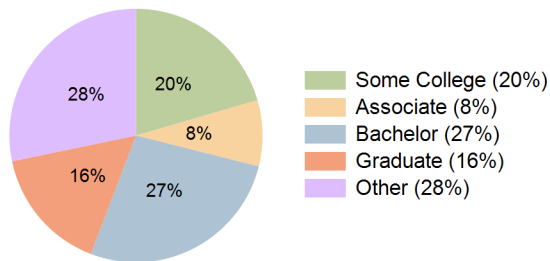


Brea Marketplace Brea, California	1 Mile Radius	3 Mile Radius	5 Mile Radius	10 Minute Drive
Current Year Demographics				
Current Population	20,035	118,279	352,926	191,887
Total Daytime Pop	31,189	166,770	452,489	273,080
Workplace Pop	20,119	71,215	178,333	107,635
Average Household Income	\$123,135	\$128,006	\$121,886	\$122,153
Median Household Income	\$97,975	\$102,743	\$95,946	\$97,750
Total Households	7,311	42,097	115,636	65,156
Median Home Value	\$886,889	\$935,004	\$924,985	\$925,041
Bachelors Degree	29.4%	28.1%	26.5%	26.9%
Graduate Degree	16.4%	18.0%	14.2%	15.9%
Total Consumer Spending/Capita (Weekly)	\$412	\$412	\$407	\$407

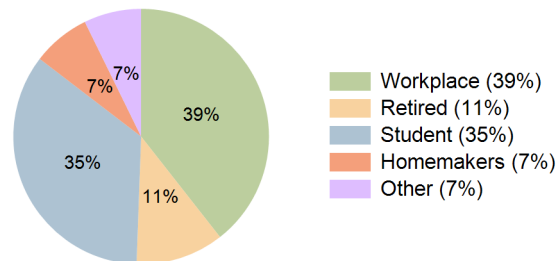
2027 Demographic Projections

Projected Population	20,597	119,363	356,728	193,427
Projected 5 Year Annual Growth Rate (Pop)	0.6%	0.2%	0.2%	0.2%
Projected Households	7,512	42,456	116,765	65,659
Projected 5 Year Annual Growth Rate (HH)	0.5%	0.2%	0.2%	0.2%

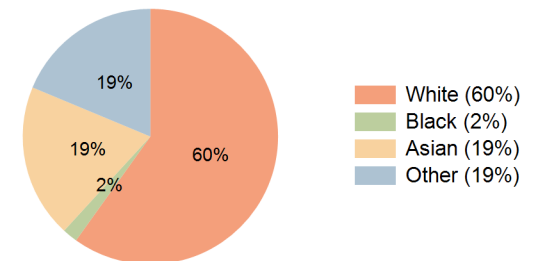
Education (10 Minute Drive)



Daytime Population (10 Minute Drive)

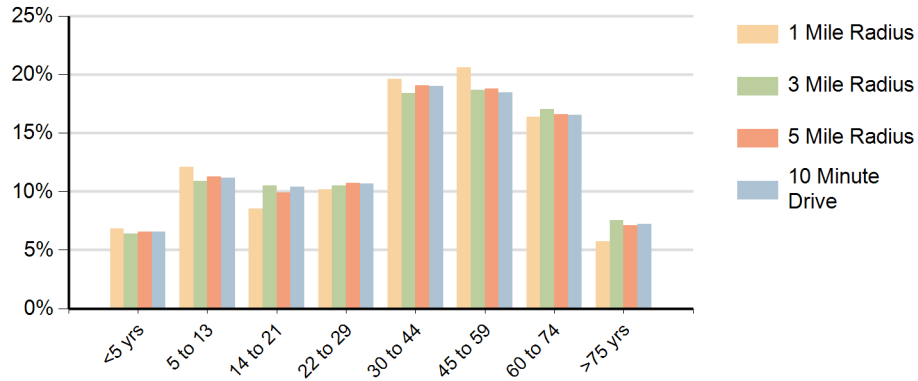


Race (10 Minute Drive)

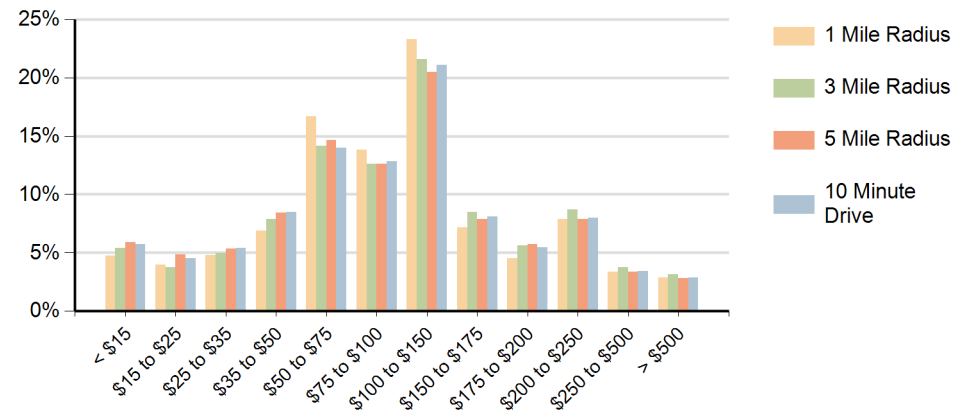


Hispanic Ethnicity
36% Hispanic | 64% Non Hispanic

Population by Age Range



Households by Income Range (\$000)



Brea Marketplace Brea, California		1 Mile Radius	3 Mile Radius	5 Mile Radius	10 Minute Drive
Population	Current Estimated Population	20,035	118,279	352,926	191,887
	2010 Census Population	18,013	113,078	336,088	184,336
	2000 Census Population	16,564	105,634	318,527	175,630
	Historical Annual Growth 2000 to 2010	0.8%	0.7%	0.5%	0.5%
	Estimated Annual Growth 2010 to 2022	0.9%	0.4%	0.4%	0.3%
	Projected Annual Growth 2022 to 2027	0.6%	0.2%	0.2%	0.2%
Households	Current Estimated Households	7,311	42,097	115,636	65,156
	2010 Census Households	6,583	40,178	110,166	62,510
	2000 Census Households	6,156	38,348	104,887	60,054
	Historical Annual Growth 2000 to 2010	0.7%	0.5%	0.5%	0.4%
	Estimated Annual Growth 2010 to 2022	0.9%	0.4%	0.4%	0.3%
	Projected Annual Growth 2022 to 2027	0.5%	0.2%	0.2%	0.2%
	Population per Household	2.7	2.8	3.0	2.9
Ethnic	Hispanic or Latino Population	31%	30%	37%	36%
	Non Hispanic or Latino Population	69%	70%	63%	64%
Race	White	63.5%	64.6%	55.0%	59.9%
	Black or African American	1.7%	1.9%	1.9%	1.9%
	Asian & Pacific Islander	20.2%	18.3%	23.5%	19.5%
	Other Races	14.5%	15.2%	19.6%	18.7%