

Westbard Square Bethesda, Maryland	1 Mile Radius	3 Mile Radius	5 Mile Radius	10 Minute Drive
---------------------------------------	---------------	---------------	---------------	-----------------

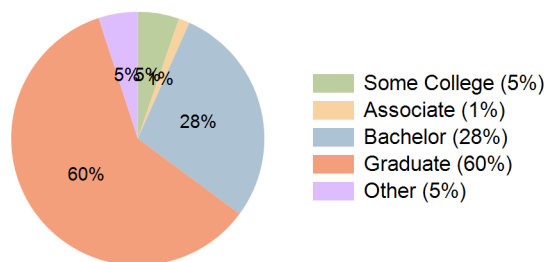
Current Year Demographics

Current Population	18,653	143,155	467,582	94,692
Total Daytime Pop	14,570	216,491	634,356	156,716
Workplace Pop	4,888	113,562	339,779	84,964
Average Household Income	\$256,314	\$255,580	\$206,895	\$256,802
Median Household Income	\$165,202	\$167,525	\$140,636	\$167,798
Total Households	8,022	62,124	205,431	40,430
Median Home Value	\$1,183,914	\$1,237,305	\$930,203	\$1,282,154
Bachelors Degree	29.2%	28.5%	29.2%	28.4%
Graduate Degree	59.3%	59.2%	49.2%	59.9%
Total Consumer Spending/Capita (Weekly)	\$437	\$433	\$424	\$433

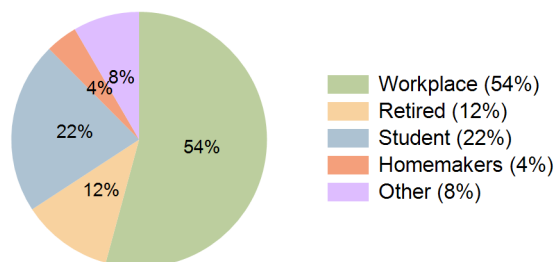
2027 Demographic Projections

Projected Population	18,896	143,837	472,216	95,715
Projected 5 Year Annual Growth Rate (Pop)	0.3%	0.1%	0.2%	0.2%
Projected Households	8,151	62,587	208,013	41,073
Projected 5 Year Annual Growth Rate (HH)	0.3%	0.1%	0.3%	0.3%

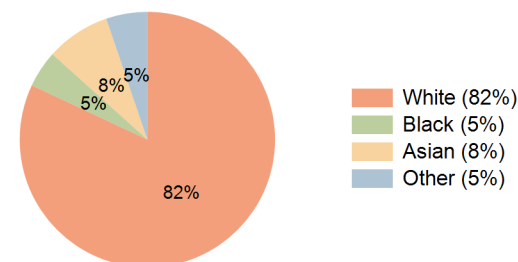
Education (10 Minute Drive)



Daytime Population (10 Minute Drive)

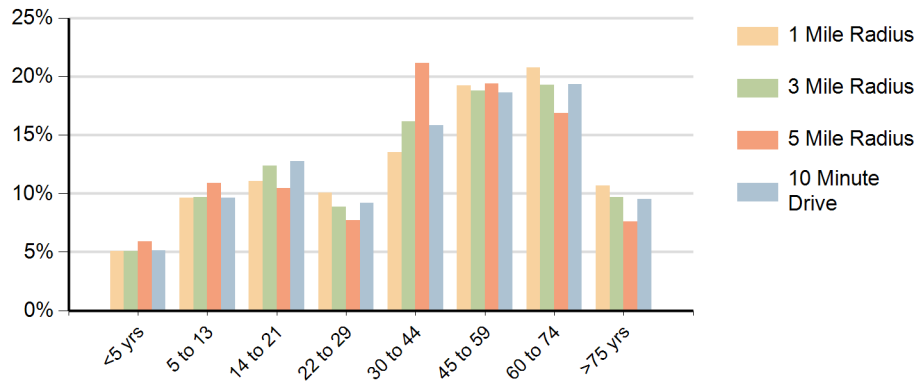


Race (10 Minute Drive)

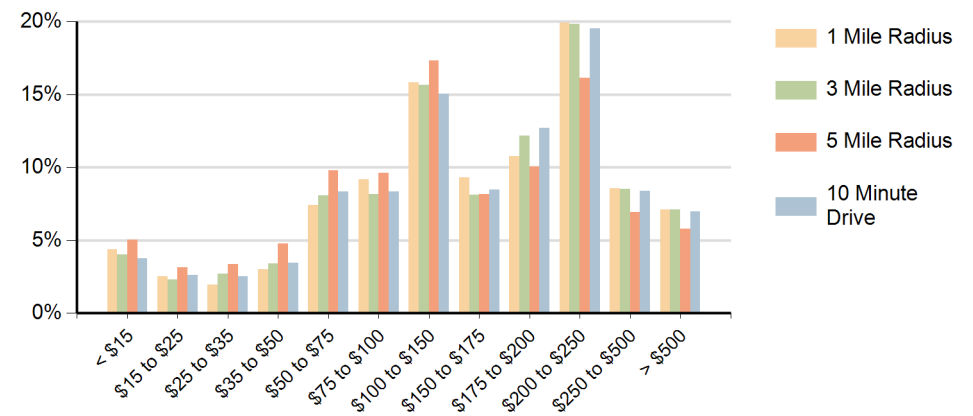


Hispanic Ethnicity
8% Hispanic | 92% Non Hispanic

Population by Age Range



Households by Income Range (\$000)



Westbard Square Bethesda, Maryland		1 Mile Radius	3 Mile Radius	5 Mile Radius	10 Minute Drive
Population	Current Estimated Population	18,653	143,155	467,582	94,692
	2010 Census Population	18,032	138,714	441,560	89,781
	2000 Census Population	16,660	132,121	420,272	84,559
	Historical Annual Growth 2000 to 2010	0.8%	0.5%	0.5%	0.6%
	Estimated Annual Growth 2010 to 2022	0.3%	0.3%	0.5%	0.4%
	Projected Annual Growth 2022 to 2027	0.3%	0.1%	0.2%	0.2%
Households	Current Estimated Households	8,022	62,124	205,431	40,430
	2010 Census Households	7,694	59,933	192,914	37,763
	2000 Census Households	7,306	57,912	185,170	35,763
	Historical Annual Growth 2000 to 2010	0.5%	0.3%	0.4%	0.5%
	Estimated Annual Growth 2010 to 2022	0.3%	0.3%	0.5%	0.6%
	Projected Annual Growth 2022 to 2027	0.3%	0.1%	0.3%	0.3%
Population per Household		2.3	2.2	2.2	2.2
Ethnic	Hispanic or Latino Population	8%	8%	12%	8%
	Non Hispanic or Latino Population	92%	92%	88%	92%
Race	White	85.1%	81.8%	67.8%	82.0%
	Black or African American	3.2%	5.3%	15.6%	4.7%
	Asian & Pacific Islander	6.7%	7.6%	7.4%	8.1%
	Other Races	5.0%	5.3%	9.2%	5.2%