

The Abbot Cambridge, Massachusetts	1 Mile Radius	3 Mile Radius	5 Mile Radius	10 Minute Drive
---------------------------------------	---------------	---------------	---------------	-----------------

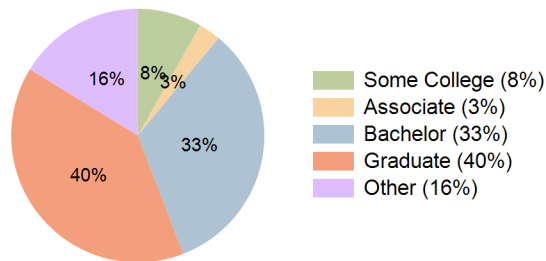
### Current Year Demographics

Current Population	56,717	463,532	973,108	372,278
Total Daytime Pop	160,224	843,278	1,514,488	706,013
Workplace Pop	75,884	398,456	767,288	338,336
Average Household Income	\$155,552	\$142,062	\$139,463	\$141,430
Median Household Income	\$111,925	\$104,228	\$99,578	\$104,504
Total Households	23,647	200,882	407,833	157,749
Median Home Value	\$963,104	\$854,312	\$789,278	\$868,619
Bachelors Degree	32.4%	33.4%	29.4%	33.1%
Graduate Degree	52.9%	39.6%	32.3%	39.6%
Total Consumer Spending/Capita (Weekly)	\$419	\$417	\$419	\$416

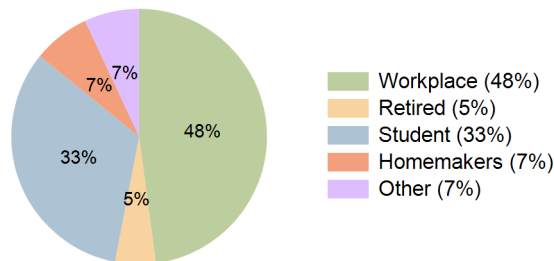
### 2027 Demographic Projections

Projected Population	56,490	469,250	988,331	376,893
Projected 5 Year Annual Growth Rate (Pop)	-0.1%	0.2%	0.3%	0.2%
Projected Households	23,521	203,559	415,294	159,818
Projected 5 Year Annual Growth Rate (HH)	-0.1%	0.3%	0.4%	0.3%

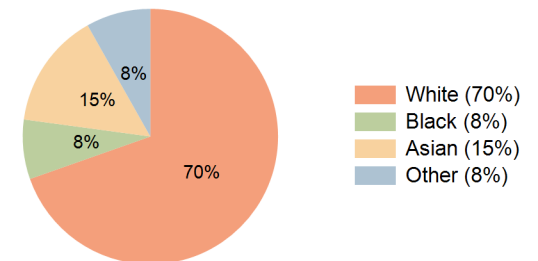
Education (10 Minute Drive)



Daytime Population (10 Minute Drive)

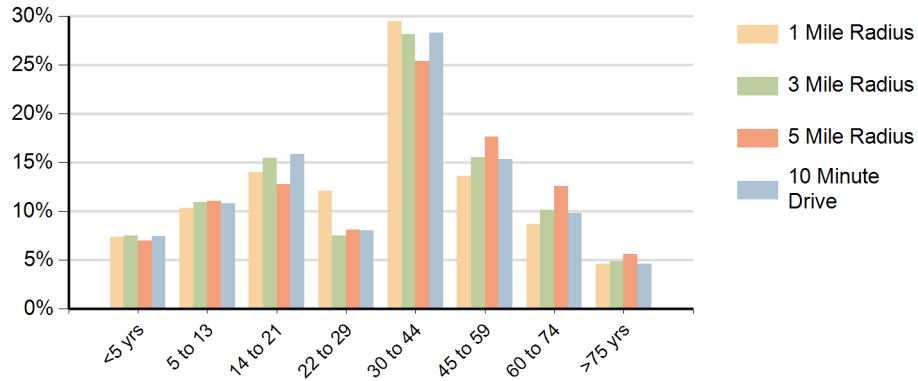


Race (10 Minute Drive)

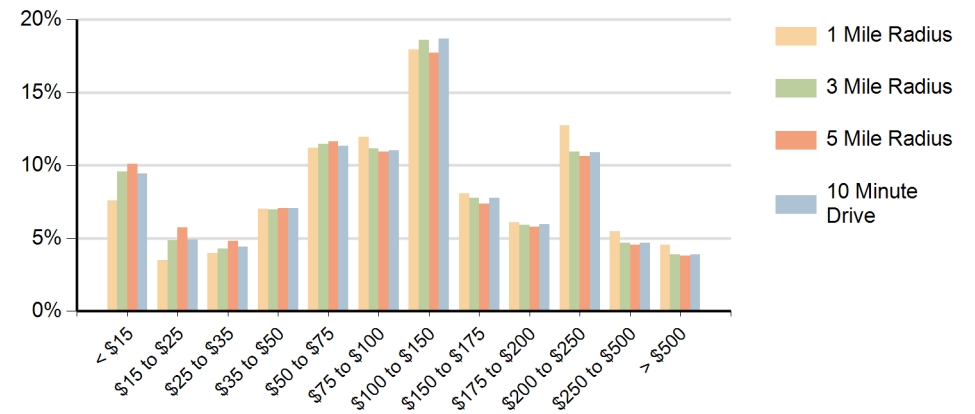


**Hispanic Ethnicity**  
9% Hispanic | 91% Non Hispanic

### Population by Age Range



### Households by Income Range (\$000)



The Abbot Cambridge, Massachusetts		1 Mile Radius	3 Mile Radius	5 Mile Radius	10 Minute Drive
Population	Current Estimated Population	56,717	463,532	973,108	372,278
	2010 Census Population	55,708	438,762	913,539	350,987
	2000 Census Population	53,654	427,877	871,953	342,117
	Historical Annual Growth 2000 to 2010	0.4%	0.3%	0.5%	0.3%
	Estimated Annual Growth 2010 to 2022	0.1%	0.4%	0.5%	0.5%
	Projected Annual Growth 2022 to 2027	-0.1%	0.2%	0.3%	0.2%
Households	Current Estimated Households	23,647	200,882	407,833	157,749
	2010 Census Households	23,144	189,466	380,563	147,969
	2000 Census Households	23,008	186,688	366,916	145,653
	Historical Annual Growth 2000 to 2010	0.1%	0.1%	0.4%	0.2%
	Estimated Annual Growth 2010 to 2022	0.2%	0.5%	0.6%	0.5%
	Projected Annual Growth 2022 to 2027	-0.1%	0.3%	0.4%	0.3%
	Population per Household	1.9	2.1	2.2	2.1
Ethnic	Hispanic or Latino Population	8%	9%	14%	9%
	Non Hispanic or Latino Population	92%	91%	86%	91%
Race	White	69.1%	71.0%	66.0%	69.6%
	Black or African American	7.1%	7.0%	10.6%	7.5%
	Asian & Pacific Islander	16.5%	14.2%	12.3%	14.7%
	Other Races	7.2%	7.7%	11.2%	8.2%