

Tamarac Town Square
Tamarac, Florida

1 Mile Radius

3 Mile Radius

5 Mile Radius

10 Minute Drive

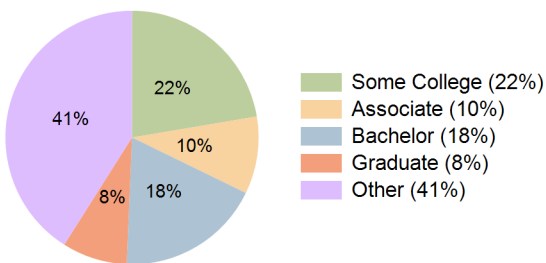
Current Year Demographics

Current Population	17,412	143,709	367,023	244,403
Total Daytime Pop	11,319	118,499	293,018	205,337
Workplace Pop	2,655	41,195	107,861	75,533
Average Household Income	\$78,295	\$67,489	\$66,070	\$64,898
Median Household Income	\$64,438	\$51,320	\$50,395	\$50,306
Total Households	7,201	56,543	142,184	94,714
Median Home Value	\$392,079	\$325,510	\$302,680	\$302,523
Bachelors Degree	25.6%	20.4%	18.3%	18.5%
Graduate Degree	13.2%	9.4%	8.4%	8.3%
Total Consumer Spending/Capita (Weekly)	\$347	\$333	\$331	\$330

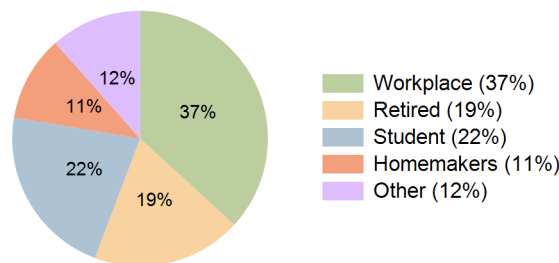
2023 Demographic Projections

Projected Population	17,755	144,680	374,392	246,847
Projected 5 Year Annual Growth Rate (Pop)	0.4%	0.1%	0.4%	0.2%
Projected Households	7,339	56,940	144,943	95,641
Projected 5 Year Annual Growth Rate (HH)	0.4%	0.1%	0.4%	0.2%

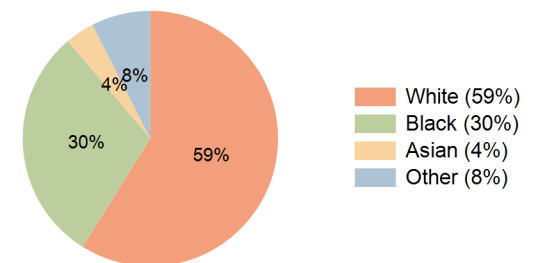
Education (10 Minute Drive)



Daytime Population (10 Minute Drive)



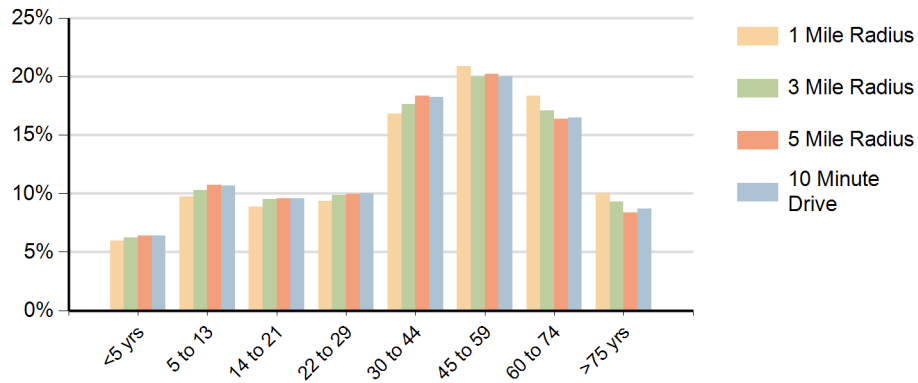
Race (10 Minute Drive)



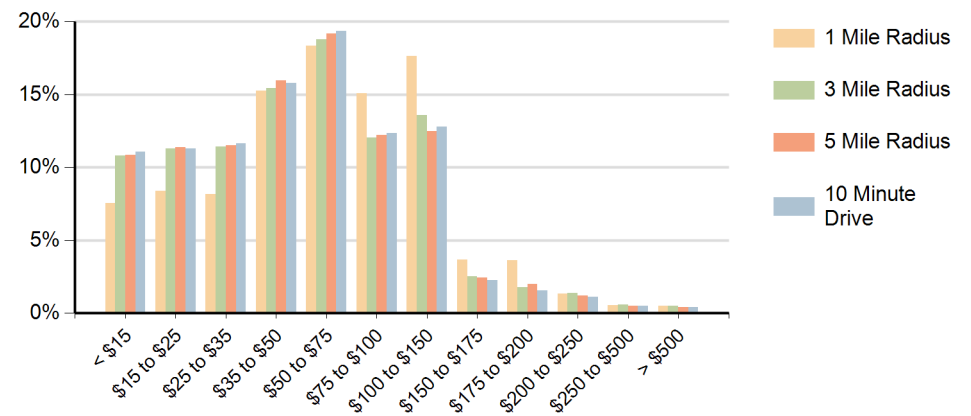
Hispanic Ethnicity

25% Hispanic | 75% Non Hispanic

Population by Age Range



Households by Income Range (\$000)



Tamarac Town Square Tamarac, Florida		1 Mile Radius	3 Mile Radius	5 Mile Radius	10 Minute Drive
Population	Current Estimated Population	17,412	143,709	367,023	244,403
	2010 Census Population	15,506	132,716	332,309	224,714
	2000 Census Population	14,030	127,946	323,937	218,482
	Historical Annual Growth 2000 to 2010	1.0%	0.4%	0.3%	0.3%
	Estimated Annual Growth 2010 to 2018	1.4%	1.0%	1.2%	1.0%
	Projected Annual Growth 2018 to 2023	0.4%	0.1%	0.4%	0.2%
Households	Current Estimated Households	7,201	56,543	142,184	94,714
	2010 Census Households	6,433	52,188	128,699	87,069
	2000 Census Households	5,784	51,069	128,637	86,771
	Historical Annual Growth 2000 to 2010	1.1%	0.2%	0.0%	0.0%
	Estimated Annual Growth 2010 to 2018	1.4%	1.0%	1.2%	1.0%
	Projected Annual Growth 2018 to 2023	0.4%	0.1%	0.4%	0.2%
	Population per Household	2.4	2.5	2.6	2.6
Ethnic	Hispanic or Latino Population	23%	25%	24%	25%
	Non Hispanic or Latino Population	77%	75%	76%	75%
Race	White	76.6%	64.0%	58.5%	58.9%
	Black or African American	14.1%	25.3%	30.0%	29.9%
	Asian & Pacific Islander	3.5%	3.5%	3.9%	3.7%
	Other Races	5.8%	7.2%	7.6%	7.5%