

**South Beach Regional**  
Jacksonville Beach, Florida

**1 Mile Radius**

**3 Mile Radius**

**5 Mile Radius**

**10 Minute Drive**

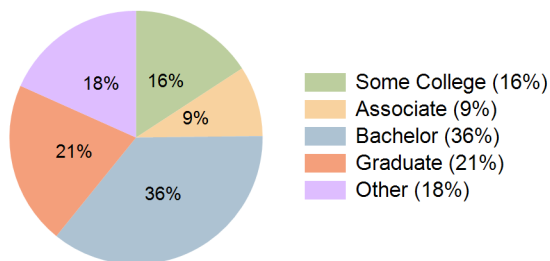
### Current Year Demographics

Current Population	11,112	36,564	82,736	71,228
Total Daytime Pop	9,633	36,565	88,139	70,572
Workplace Pop	5,100	17,945	40,679	33,403
Average Household Income	\$146,694	\$144,501	\$134,910	\$134,155
Median Household Income	\$99,461	\$100,052	\$96,071	\$95,189
Total Households	5,307	16,726	37,244	32,298
Median Home Value	\$649,510	\$680,490	\$648,043	\$652,075
Bachelors Degree	38.8%	37.5%	35.4%	36.0%
Graduate Degree	22.6%	22.2%	20.9%	20.9%
Total Consumer Spending/Capita (Weekly)	\$369	\$368	\$365	\$365

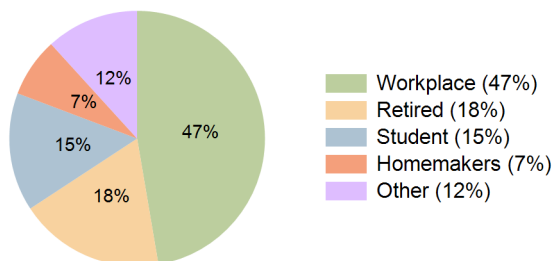
### 2027 Demographic Projections

Projected Population	10,926	36,476	83,022	71,385
Projected 5 Year Annual Growth Rate (Pop)	-0.3%	0.0%	0.1%	0.0%
Projected Households	5,209	16,637	37,273	32,302
Projected 5 Year Annual Growth Rate (HH)	-0.4%	-0.1%	0.0%	0.0%

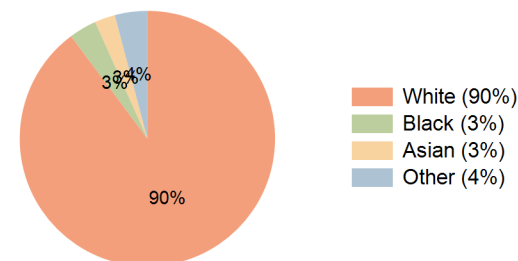
**Education (10 Minute Drive)**



**Daytime Population (10 Minute Drive)**

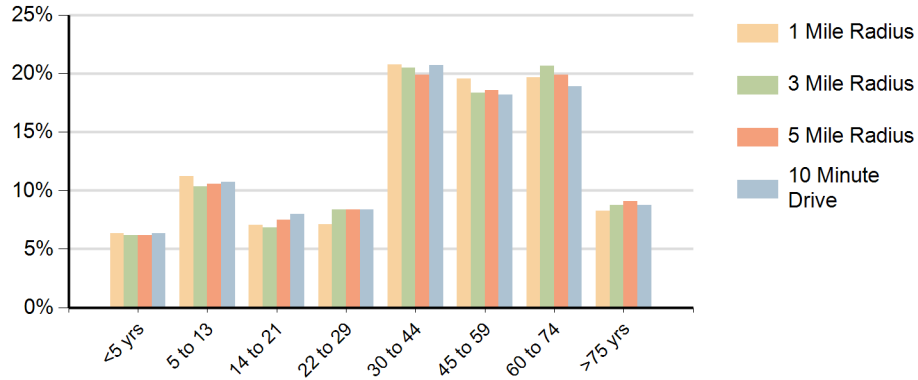


**Race (10 Minute Drive)**

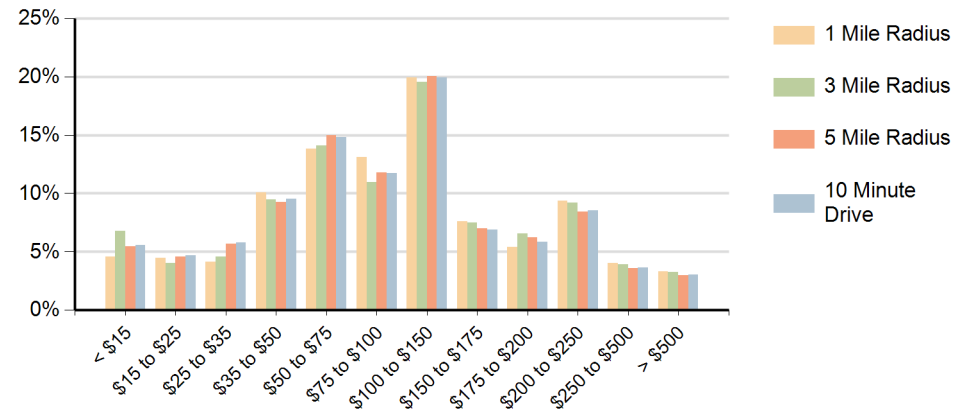


**Hispanic Ethnicity**  
6% Hispanic | 94% Non Hispanic

### Population by Age Range



### Households by Income Range (\$000)



South Beach Regional Jacksonville Beach, Florida		1 Mile Radius	3 Mile Radius	5 Mile Radius	10 Minute Drive
Population	Current Estimated Population	11,112	36,564	82,736	71,228
	2010 Census Population	10,011	31,679	72,677	62,587
	2000 Census Population	10,015	31,905	70,990	59,284
	Historical Annual Growth 2000 to 2010	0.0%	-0.1%	0.2%	0.5%
	Estimated Annual Growth 2010 to 2022	0.9%	1.2%	1.1%	1.1%
	Projected Annual Growth 2022 to 2027	-0.3%	0.0%	0.1%	0.0%
Households	Current Estimated Households	5,307	16,726	37,244	32,298
	2010 Census Households	4,793	14,616	32,883	28,461
	2000 Census Households	4,645	14,423	31,298	26,642
	Historical Annual Growth 2000 to 2010	0.3%	0.1%	0.5%	0.7%
	Estimated Annual Growth 2010 to 2022	0.8%	1.1%	1.0%	1.0%
	Projected Annual Growth 2022 to 2027	-0.4%	-0.1%	0.0%	0.0%
Population per Household		2.1	2.2	2.2	2.2
Ethnic	Hispanic or Latino Population	4%	5%	7%	6%
	Non Hispanic or Latino Population	96%	95%	93%	94%
Race	White	94.0%	91.5%	89.7%	89.8%
	Black or African American	1.3%	2.9%	3.4%	3.5%
	Asian & Pacific Islander	1.6%	1.8%	2.7%	2.6%
	Other Races	3.1%	3.8%	4.1%	4.1%