

Shoppes of Oakbrook
North Palm Beach, Florida

1 Mile Radius

3 Mile Radius

5 Mile Radius

10 Minute Drive

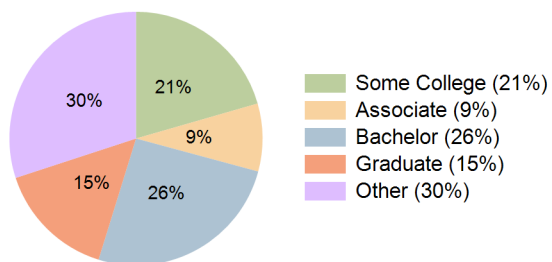
Current Year Demographics

Current Population	10,183	52,458	130,583	98,683
Total Daytime Pop	14,727	73,683	162,379	125,313
Workplace Pop	9,620	43,558	85,652	69,165
Average Household Income	\$116,595	\$104,846	\$104,520	\$103,781
Median Household Income	\$67,329	\$66,808	\$66,940	\$66,288
Total Households	5,379	25,467	59,196	46,162
Median Home Value	\$498,208	\$465,717	\$474,667	\$470,413
Bachelors Degree	32.2%	27.6%	25.1%	25.6%
Graduate Degree	17.9%	15.1%	15.5%	15.2%
Total Consumer Spending/Capita (Weekly)	\$359	\$358	\$354	\$356

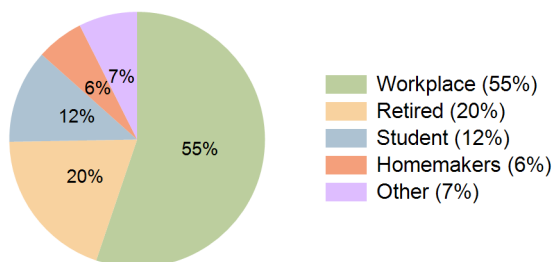
2023 Demographic Projections

Projected Population	10,559	54,948	138,393	103,901
Projected 5 Year Annual Growth Rate (Pop)	0.7%	0.9%	1.2%	1.0%
Projected Households	5,572	26,704	62,849	48,635
Projected 5 Year Annual Growth Rate (HH)	0.7%	1.0%	1.2%	1.0%

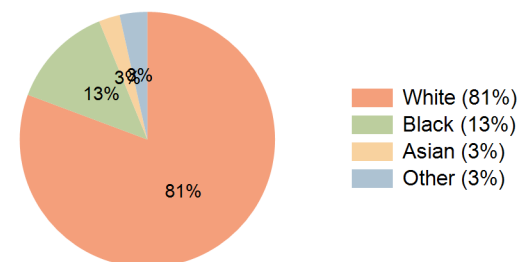
Education (10 Minute Drive)



Daytime Population (10 Minute Drive)

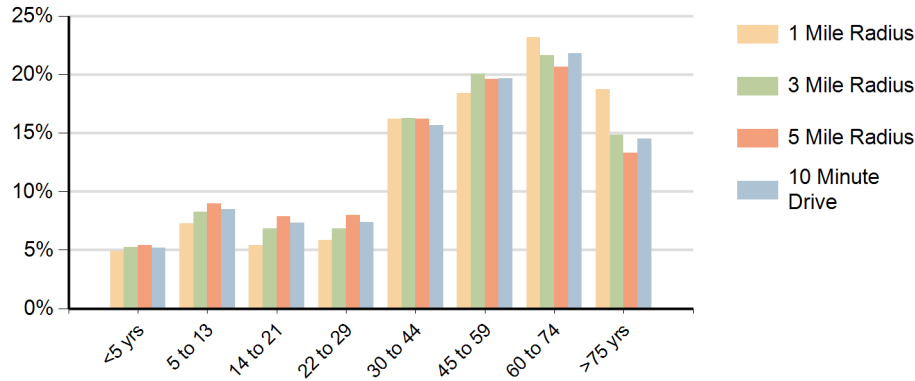


Race (10 Minute Drive)

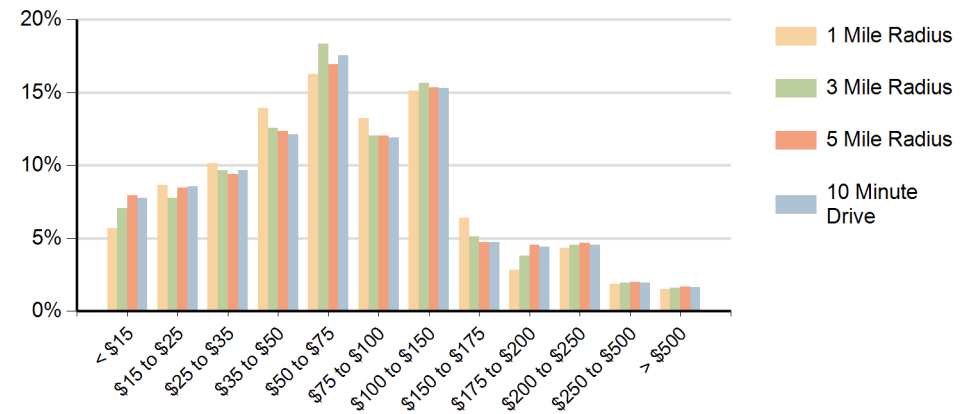


Hispanic Ethnicity
9% Hispanic | 91% Non Hispanic

Population by Age Range



Households by Income Range (\$000)



Shoppes of Oakbrook North Palm Beach, Florida		1 Mile Radius	3 Mile Radius	5 Mile Radius	10 Minute Drive
Population	Current Estimated Population	10,183	52,458	130,583	98,683
	2010 Census Population	9,420	47,697	116,594	89,207
	2000 Census Population	8,340	44,090	100,676	81,229
	Historical Annual Growth 2000 to 2010	1.2%	0.8%	1.5%	0.9%
	Estimated Annual Growth 2010 to 2018	0.9%	1.2%	1.4%	1.2%
	Projected Annual Growth 2018 to 2023	0.7%	0.9%	1.2%	1.0%
Households	Current Estimated Households	5,379	25,467	59,196	46,162
	2010 Census Households	4,980	23,078	52,653	41,654
	2000 Census Households	4,309	20,716	44,293	36,799
	Historical Annual Growth 2000 to 2010	1.5%	1.1%	1.7%	1.2%
	Estimated Annual Growth 2010 to 2018	0.9%	1.2%	1.4%	1.3%
	Projected Annual Growth 2018 to 2023	0.7%	1.0%	1.2%	1.0%
	Population per Household	1.9	2.1	2.2	2.1
Ethnic	Hispanic or Latino Population	9%	9%	9%	9%
	Non Hispanic or Latino Population	91%	91%	91%	91%
Race	White	93.4%	88.8%	74.9%	80.7%
	Black or African American	2.3%	5.5%	18.9%	13.1%
	Asian & Pacific Islander	1.9%	2.6%	2.7%	2.7%
	Other Races	2.4%	3.1%	3.5%	3.5%