

San Carlos Marketplace San Carlos, California	1 Mile Radius	3 Mile Radius	5 Mile Radius	10 Minute Drive
--	---------------	---------------	---------------	-----------------

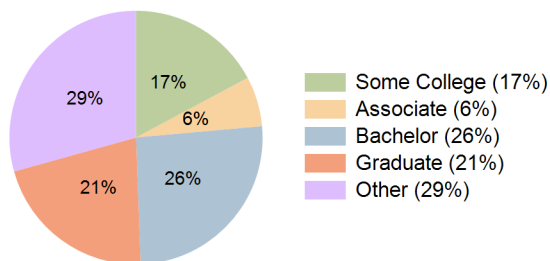
### Current Year Demographics

Current Population	12,027	136,401	267,717	154,954
Total Daytime Pop	21,960	148,863	334,951	188,879
Workplace Pop	15,952	85,185	192,534	123,011
Average Household Income	\$142,419	\$146,327	\$158,673	\$138,858
Median Household Income	\$100,046	\$104,977	\$115,406	\$101,783
Total Households	4,956	50,847	101,854	57,221
Median Home Value	\$1,580,568	\$1,548,806	\$1,543,054	\$1,491,510
Bachelors Degree	29.6%	26.3%	28.6%	25.8%
Graduate Degree	24.3%	22.6%	25.5%	21.3%
Total Consumer Spending/Capita (Weekly)	\$441	\$438	\$446	\$434

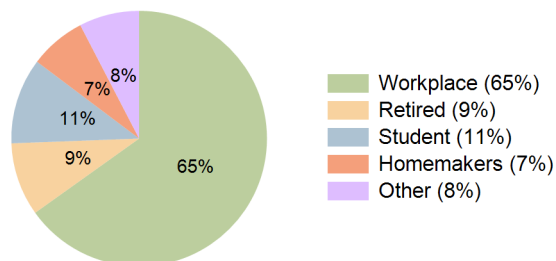
### 2023 Demographic Projections

Projected Population	12,098	137,803	271,675	157,977
Projected 5 Year Annual Growth Rate (Pop)	0.1%	0.2%	0.3%	0.4%
Projected Households	4,981	51,274	103,350	58,347
Projected 5 Year Annual Growth Rate (HH)	0.1%	0.2%	0.3%	0.4%

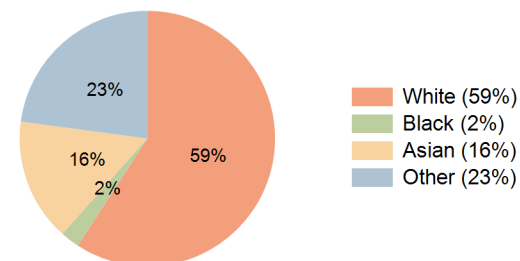
Education (10 Minute Drive)



Daytime Population (10 Minute Drive)

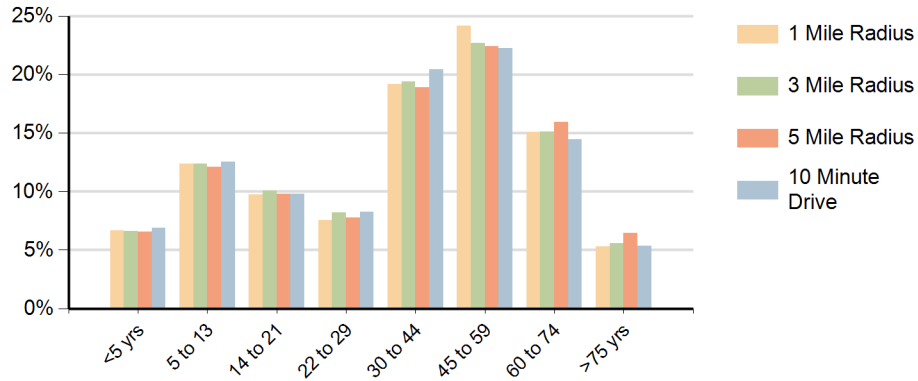


Race (10 Minute Drive)

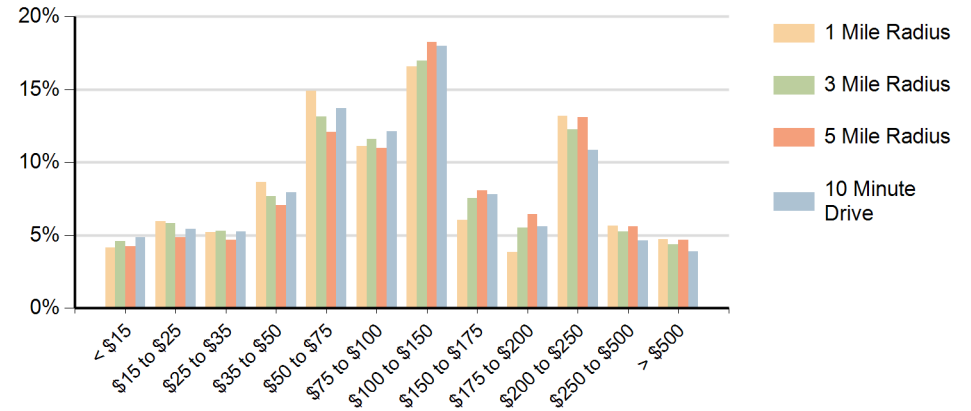


**Hispanic Ethnicity**  
33% Hispanic | 67% Non Hispanic

### Population by Age Range



### Households by Income Range (\$000)



San Carlos Marketplace San Carlos, California		1 Mile Radius	3 Mile Radius	5 Mile Radius	10 Minute Drive
Population	Current Estimated Population	12,027	136,401	267,717	154,954
	2010 Census Population	11,355	128,120	248,536	143,172
	2000 Census Population	11,309	125,312	242,251	140,152
	Historical Annual Growth 2000 to 2010	0.0%	0.2%	0.3%	0.2%
	Estimated Annual Growth 2010 to 2018	0.7%	0.8%	0.9%	1.0%
	Projected Annual Growth 2018 to 2023	0.1%	0.2%	0.3%	0.4%
Households	Current Estimated Households	4,956	50,847	101,854	57,221
	2010 Census Households	4,674	47,752	94,288	52,655
	2000 Census Households	4,716	47,325	93,272	52,026
	Historical Annual Growth 2000 to 2010	-0.1%	0.1%	0.1%	0.1%
	Estimated Annual Growth 2010 to 2018	0.7%	0.8%	0.9%	1.0%
	Projected Annual Growth 2018 to 2023	0.1%	0.2%	0.3%	0.4%
	Population per Household	2.4	2.6	2.6	2.7
Ethnic	Hispanic or Latino Population	23%	31%	25%	33%
	Non Hispanic or Latino Population	77%	69%	75%	67%
Race	White	73.4%	63.3%	62.2%	59.2%
	Black or African American	1.4%	2.0%	2.0%	2.4%
	Asian & Pacific Islander	9.5%	13.4%	18.3%	15.5%
	Other Races	15.7%	21.3%	17.5%	22.9%