

| Prosperity Centre Palm Beach Gardens, Florida | 1 Mile Radius | 3 Mile Radius | 5 Mile Radius | 10 Minute Drive |
|--|---------------|---------------|---------------|-----------------|
|--|---------------|---------------|---------------|-----------------|

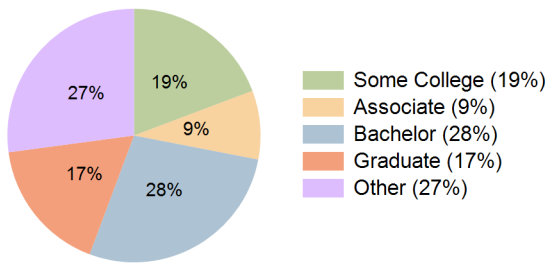
Current Year Demographics

| | | | | |
|---|-----------|-----------|-----------|-----------|
| Current Population | 10,109 | 64,130 | 144,663 | 114,126 |
| Total Daytime Pop | 17,673 | 80,158 | 165,550 | 132,753 |
| Workplace Pop | 11,549 | 40,860 | 74,344 | 63,007 |
| Average Household Income | \$132,948 | \$134,432 | \$130,408 | \$129,785 |
| Median Household Income | \$80,069 | \$80,375 | \$81,399 | \$80,886 |
| Total Households | 5,318 | 30,247 | 65,411 | 51,781 |
| Median Home Value | \$638,337 | \$640,365 | \$631,253 | \$624,738 |
| Bachelors Degree | 30.6% | 29.4% | 27.4% | 27.7% |
| Graduate Degree | 15.4% | 16.6% | 17.8% | 17.2% |
| Total Consumer Spending/Capita (Weekly) | \$400 | \$402 | \$398 | \$398 |

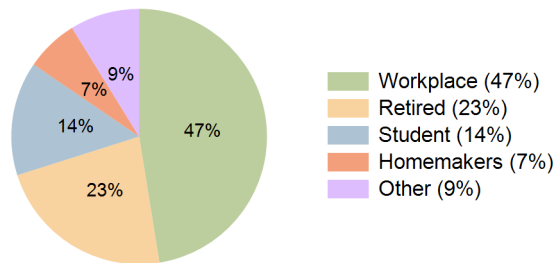
2027 Demographic Projections

| | | | | |
|---|--------|--------|---------|---------|
| Projected Population | 10,284 | 66,652 | 151,478 | 119,182 |
| Projected 5 Year Annual Growth Rate (Pop) | 0.3% | 0.8% | 0.9% | 0.9% |
| Projected Households | 5,414 | 31,469 | 68,605 | 54,139 |
| Projected 5 Year Annual Growth Rate (HH) | 0.4% | 0.8% | 1.0% | 0.9% |

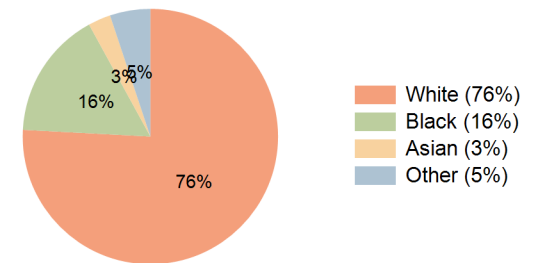
Education (10 Minute Drive)



Daytime Population (10 Minute Drive)



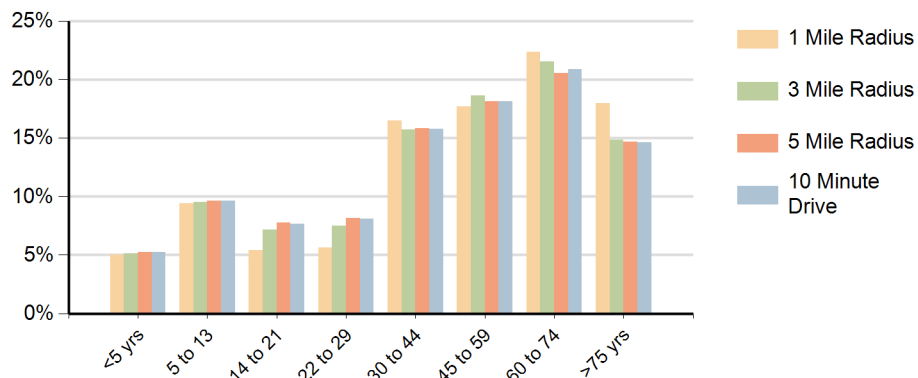
Race (10 Minute Drive)



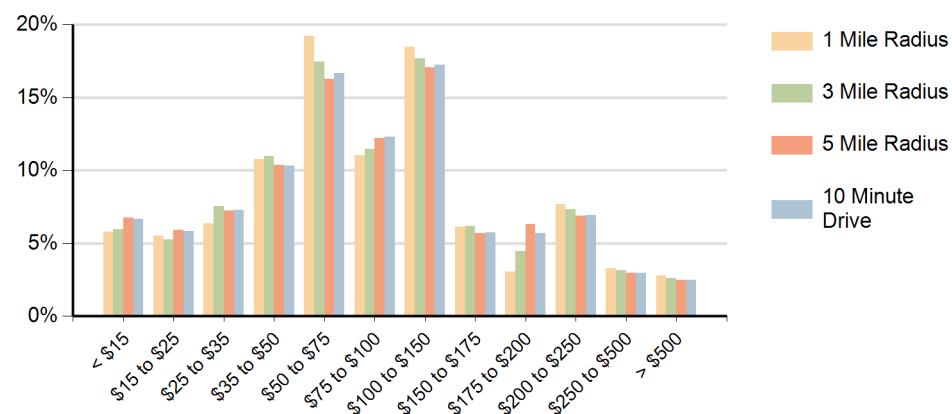
Hispanic Ethnicity

10% Hispanic | 90% Non Hispanic

Population by Age Range



Households by Income Range (\$000)



| Prosperity Centre Palm Beach Gardens, Florida | | 1 Mile Radius | 3 Mile Radius | 5 Mile Radius | 10 Minute Drive |
|--|---------------------------------------|---------------|---------------|---------------|-----------------|
| Population | Current Estimated Population | 10,109 | 64,130 | 144,663 | 114,126 |
| | 2010 Census Population | 9,384 | 57,516 | 126,959 | 101,032 |
| | 2000 Census Population | 7,478 | 52,449 | 107,989 | 89,528 |
| | Historical Annual Growth 2000 to 2010 | 2.3% | 0.9% | 1.6% | 1.2% |
| | Estimated Annual Growth 2010 to 2022 | 0.6% | 0.9% | 1.1% | 1.0% |
| | Projected Annual Growth 2022 to 2027 | 0.3% | 0.8% | 0.9% | 0.9% |
| Households | Current Estimated Households | 5,318 | 30,247 | 65,411 | 51,781 |
| | 2010 Census Households | 4,922 | 27,020 | 57,185 | 45,728 |
| | 2000 Census Households | 3,905 | 23,908 | 47,399 | 39,358 |
| | Historical Annual Growth 2000 to 2010 | 2.3% | 1.2% | 1.9% | 1.5% |
| | Estimated Annual Growth 2010 to 2022 | 0.6% | 0.9% | 1.1% | 1.0% |
| | Projected Annual Growth 2022 to 2027 | 0.4% | 0.8% | 1.0% | 0.9% |
| | Population per Household | 1.9 | 2.1 | 2.2 | 2.2 |
| Ethnic | Hispanic or Latino Population | 11% | 10% | 9% | 10% |
| | Non Hispanic or Latino Population | 89% | 90% | 91% | 90% |
| Race | White | 88.8% | 85.0% | 73.9% | 75.8% |
| | Black or African American | 3.0% | 7.0% | 18.5% | 16.2% |
| | Asian & Pacific Islander | 2.8% | 2.9% | 2.7% | 2.9% |
| | Other Races | 5.4% | 5.1% | 4.9% | 5.1% |