

Lake Mary Centre Lake Mary, Florida	1 Mile Radius	3 Mile Radius	5 Mile Radius	10 Minute Drive
--	---------------	---------------	---------------	-----------------

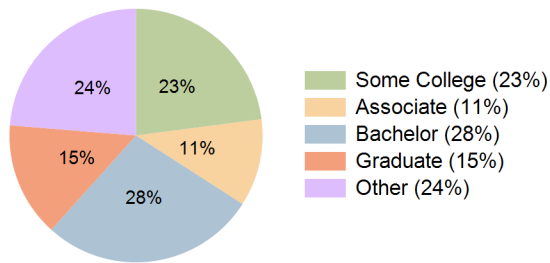
### Current Year Demographics

Current Population	10,836	58,458	140,170	25,581
Total Daytime Pop	27,606	97,673	199,517	59,304
Workplace Pop	21,491	55,892	99,906	43,238
Average Household Income	\$80,656	\$99,544	\$84,735	\$91,457
Median Household Income	\$62,859	\$76,934	\$63,303	\$71,609
Total Households	4,535	22,826	54,518	10,449
Median Home Value	\$421,710	\$466,239	\$366,961	\$445,114
Bachelors Degree	25.9%	28.6%	24.5%	27.6%
Graduate Degree	13.3%	16.1%	12.5%	14.6%
Total Consumer Spending/Capita (Weekly)	\$318	\$333	\$319	\$328

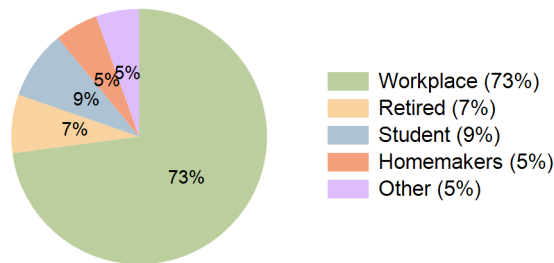
### 2023 Demographic Projections

Projected Population	11,702	63,030	149,646	27,775
Projected 5 Year Annual Growth Rate (Pop)	1.5%	1.5%	1.3%	1.7%
Projected Households	4,908	24,702	58,337	11,380
Projected 5 Year Annual Growth Rate (HH)	1.6%	1.6%	1.4%	1.7%

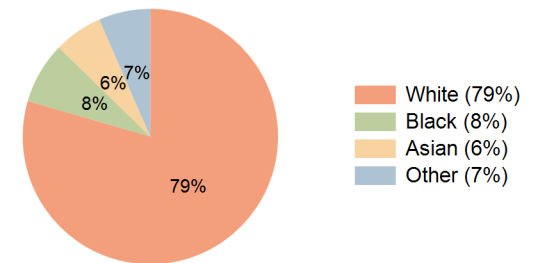
Education (10 Minute Drive)



Daytime Population (10 Minute Drive)

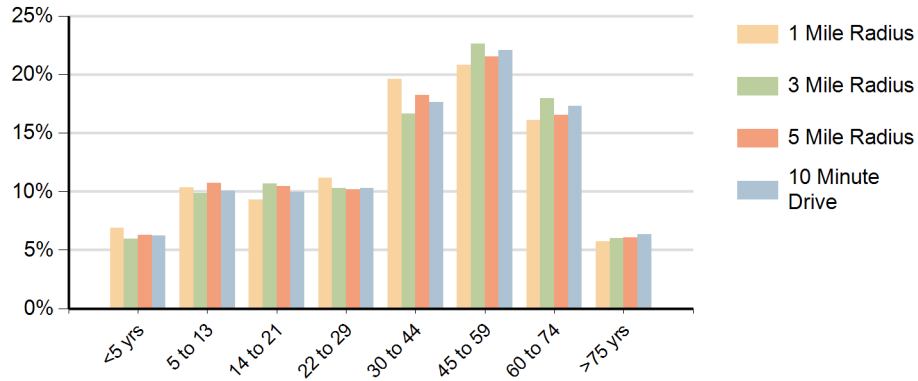


Race (10 Minute Drive)

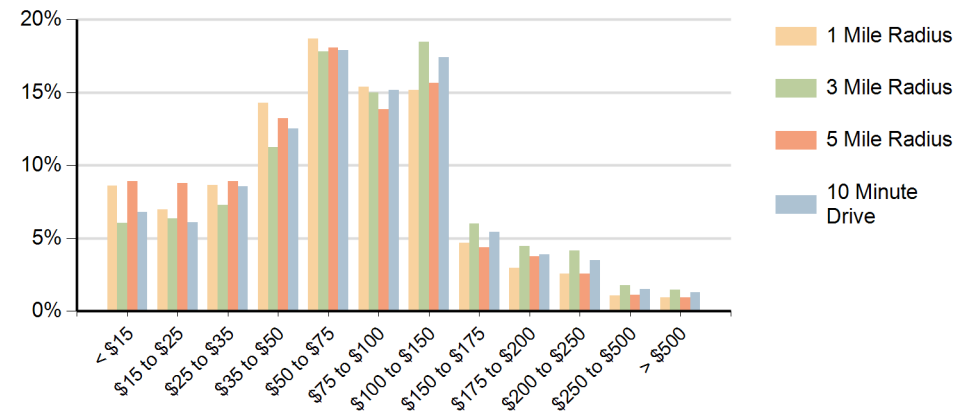


**Hispanic Ethnicity**  
17% Hispanic | 83% Non Hispanic

### Population by Age Range



### Households by Income Range (\$000)



Lake Mary Centre Lake Mary, Florida		1 Mile Radius	3 Mile Radius	5 Mile Radius	10 Minute Drive
Population	Current Estimated Population	10,836	58,458	140,170	25,581
	2010 Census Population	9,495	51,245	124,763	22,072
	2000 Census Population	8,839	42,631	100,032	19,623
	Historical Annual Growth 2000 to 2010	0.7%	1.9%	2.2%	1.2%
	Estimated Annual Growth 2010 to 2018	1.6%	1.6%	1.4%	1.8%
	Projected Annual Growth 2018 to 2023	1.5%	1.5%	1.3%	1.7%
Households	Current Estimated Households	4,535	22,826	54,518	10,449
	2010 Census Households	3,959	19,837	48,240	8,953
	2000 Census Households	3,427	15,566	37,432	7,574
	Historical Annual Growth 2000 to 2010	1.5%	2.5%	2.6%	1.7%
	Estimated Annual Growth 2010 to 2018	1.7%	1.7%	1.5%	1.9%
	Projected Annual Growth 2018 to 2023	1.6%	1.6%	1.4%	1.7%
	Population per Household	2.4	2.5	2.5	2.4
Ethnic	Hispanic or Latino Population	21%	15%	17%	17%
	Non Hispanic or Latino Population	79%	85%	83%	83%
Race	White	77.3%	80.4%	78.2%	79.5%
	Black or African American	8.8%	7.5%	10.8%	7.8%
	Asian & Pacific Islander	5.7%	6.4%	4.8%	6.2%
	Other Races	8.3%	5.7%	6.3%	6.6%