

**Greenwood Shopping Centre**  
Palm Springs, Florida

**1 Mile Radius**

**3 Mile Radius**

**5 Mile Radius**

**10 Minute Drive**

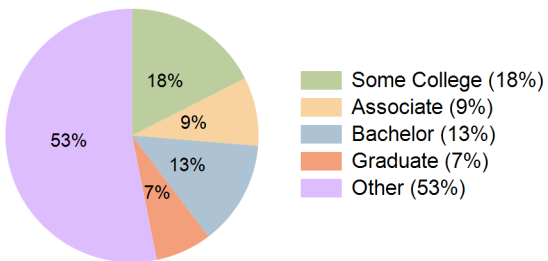
**Current Year Demographics**

Current Population	18,903	149,592	312,555	236,056
Total Daytime Pop	13,999	153,641	306,022	237,150
Workplace Pop	4,790	39,528	95,434	68,711
Average Household Income	\$70,796	\$71,864	\$80,188	\$73,905
Median Household Income	\$53,542	\$52,095	\$55,336	\$53,131
Total Households	7,522	53,365	114,894	86,125
Median Home Value	\$348,445	\$363,449	\$383,757	\$370,222
Bachelors Degree	14.3%	12.8%	14.5%	13.4%
Graduate Degree	6.7%	6.8%	7.7%	7.2%
Total Consumer Spending/Capita (Weekly)	\$372	\$368	\$371	\$369

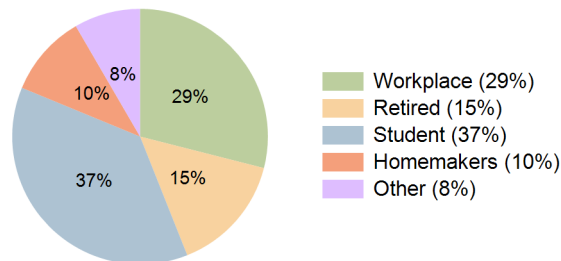
**2027 Demographic Projections**

Projected Population	19,072	152,006	319,728	241,401
Projected 5 Year Annual Growth Rate (Pop)	0.2%	0.3%	0.5%	0.4%
Projected Households	7,586	54,219	117,492	88,112
Projected 5 Year Annual Growth Rate (HH)	0.2%	0.3%	0.4%	0.5%

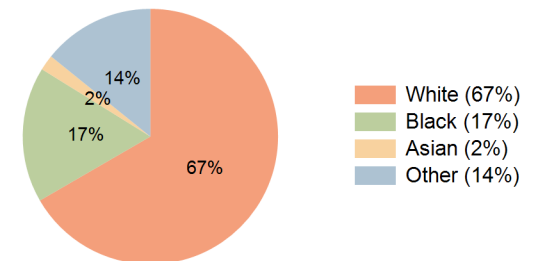
**Education (10 Minute Drive)**



**Daytime Population (10 Minute Drive)**

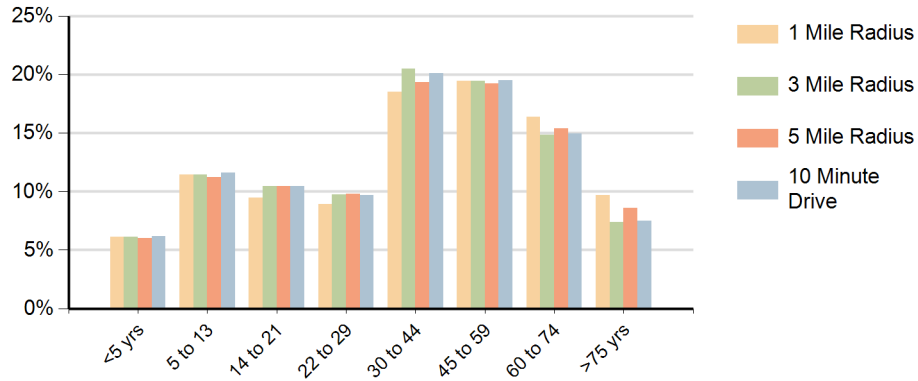


**Race (10 Minute Drive)**

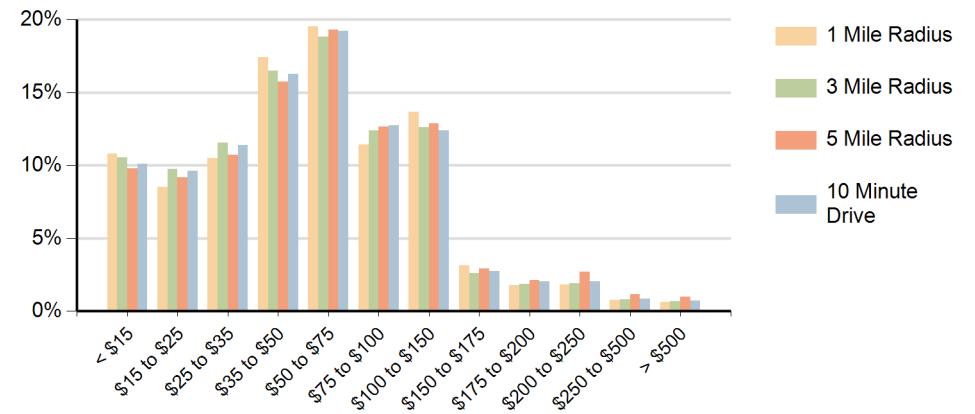


**Hispanic Ethnicity**  
46% Hispanic | 54% Non Hispanic

### Population by Age Range



### Households by Income Range (\$000)



Greenwood Shopping Centre Palm Springs, Florida		1 Mile Radius	3 Mile Radius	5 Mile Radius	10 Minute Drive
Population	Current Estimated Population	18,903	149,592	312,555	236,056
	2010 Census Population	17,881	140,397	290,914	220,149
	2000 Census Population	16,537	129,587	257,766	197,034
	Historical Annual Growth 2000 to 2010	0.8%	0.8%	1.2%	1.1%
	Estimated Annual Growth 2010 to 2022	0.5%	0.5%	0.6%	0.6%
	Projected Annual Growth 2022 to 2027	0.2%	0.3%	0.5%	0.4%
Households	Current Estimated Households	7,522	53,365	114,894	86,125
	2010 Census Households	7,128	50,155	107,136	80,327
	2000 Census Households	7,156	50,732	103,185	78,376
	Historical Annual Growth 2000 to 2010	0.0%	-0.1%	0.4%	0.2%
	Estimated Annual Growth 2010 to 2022	0.4%	0.5%	0.6%	0.6%
	Projected Annual Growth 2022 to 2027	0.2%	0.3%	0.4%	0.5%
	Population per Household	2.5	2.7	2.7	2.7
Ethnic	Hispanic or Latino Population	48%	50%	41%	46%
	Non Hispanic or Latino Population	52%	50%	59%	54%
Race	White	75.1%	68.3%	65.3%	66.6%
	Black or African American	12.6%	15.1%	19.3%	17.2%
	Asian & Pacific Islander	1.3%	1.7%	2.2%	2.0%
	Other Races	11.0%	15.0%	13.2%	14.2%