

Countryside Shops
Cooper City, Florida

1 Mile Radius

3 Mile Radius

5 Mile Radius

10 Minute Drive

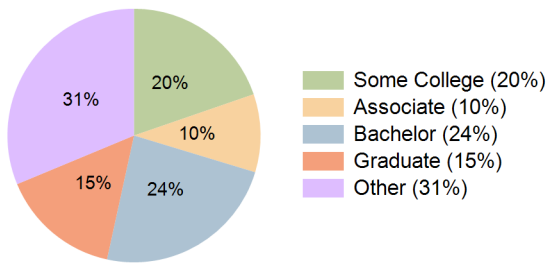
Current Year Demographics

Current Population	8,565	81,981	303,074	204,874
Total Daytime Pop	6,829	82,237	290,209	190,624
Workplace Pop	2,477	31,371	111,785	76,925
Average Household Income	\$144,448	\$124,046	\$104,771	\$106,809
Median Household Income	\$128,406	\$98,107	\$79,988	\$80,990
Total Households	2,915	28,813	111,752	75,952
Median Home Value	\$808,040	\$778,423	\$636,078	\$653,092
Bachelors Degree	26.3%	25.2%	23.4%	23.8%
Graduate Degree	20.1%	17.8%	14.7%	15.3%
Total Consumer Spending/Capita (Weekly)	\$411	\$408	\$395	\$397

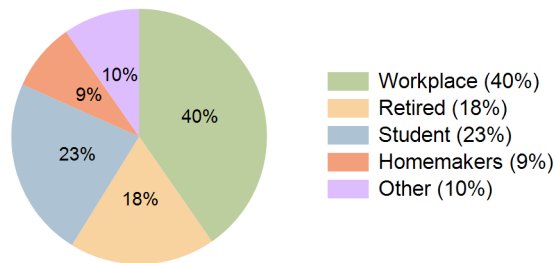
2027 Demographic Projections

Projected Population	8,498	82,008	310,365	209,249
Projected 5 Year Annual Growth Rate (Pop)	-0.2%	0.0%	0.5%	0.4%
Projected Households	2,889	28,799	114,586	77,660
Projected 5 Year Annual Growth Rate (HH)	-0.2%	0.0%	0.5%	0.4%

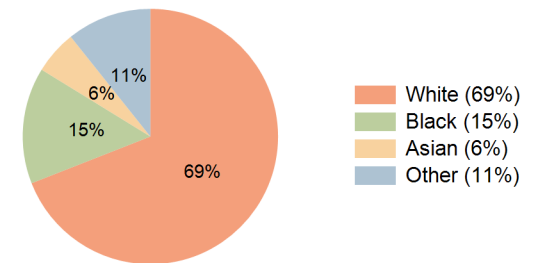
Education (10 Minute Drive)



Daytime Population (10 Minute Drive)

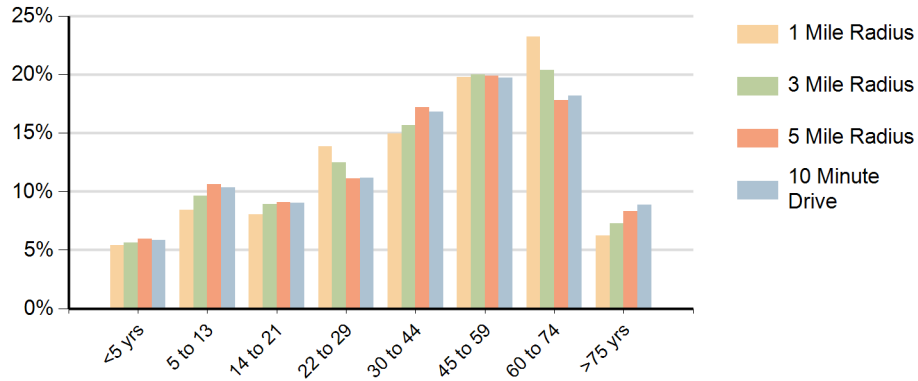


Race (10 Minute Drive)

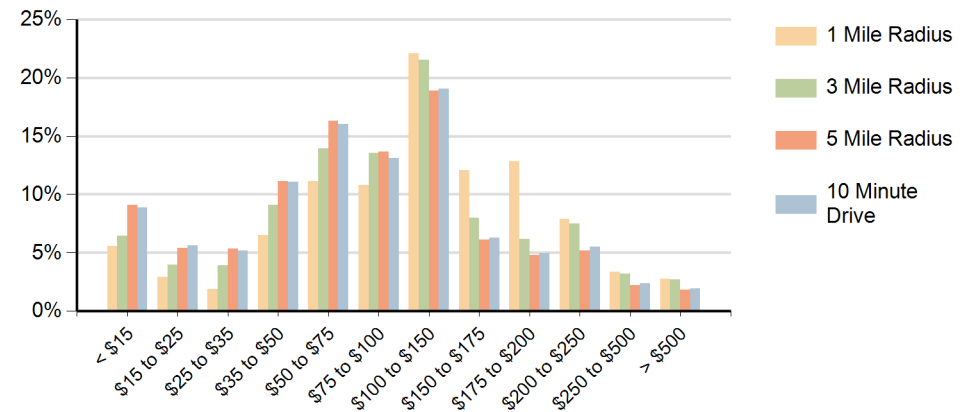


Hispanic Ethnicity
38% Hispanic | 62% Non Hispanic

Population by Age Range



Households by Income Range (\$000)



Countryside Shops Cooper City, Florida		1 Mile Radius	3 Mile Radius	5 Mile Radius	10 Minute Drive
Population	Current Estimated Population	8,565	81,981	303,074	204,874
	2010 Census Population	8,214	77,418	270,927	183,604
	2000 Census Population	8,215	70,540	231,445	160,149
	Historical Annual Growth 2000 to 2010	0.0%	0.9%	1.6%	1.4%
	Estimated Annual Growth 2010 to 2022	0.3%	0.5%	0.9%	0.9%
	Projected Annual Growth 2022 to 2027	-0.2%	0.0%	0.5%	0.4%
Households	Current Estimated Households	2,915	28,813	111,752	75,952
	2010 Census Households	2,806	27,367	99,572	67,879
	2000 Census Households	2,706	25,197	87,561	60,882
	Historical Annual Growth 2000 to 2010	0.4%	0.8%	1.3%	1.1%
	Estimated Annual Growth 2010 to 2022	0.3%	0.4%	0.9%	0.9%
	Projected Annual Growth 2022 to 2027	-0.2%	0.0%	0.5%	0.4%
	Population per Household	2.9	2.8	2.7	2.7
Ethnic	Hispanic or Latino Population	31%	35%	38%	38%
	Non Hispanic or Latino Population	69%	65%	62%	62%
Race	White	80.5%	74.2%	67.1%	69.0%
	Black or African American	6.8%	10.7%	16.7%	14.7%
	Asian & Pacific Islander	4.4%	5.6%	5.5%	5.5%
	Other Races	8.3%	9.5%	10.7%	10.7%

This report was produced using data from private and government sources deemed to be reliable and is herein provided without representation or warranty.