

**Clocktower Plaza**  
Ozone Park, New York

**1 Mile Radius**

**3 Mile Radius**

**5 Mile Radius**

**10 Minute Drive**

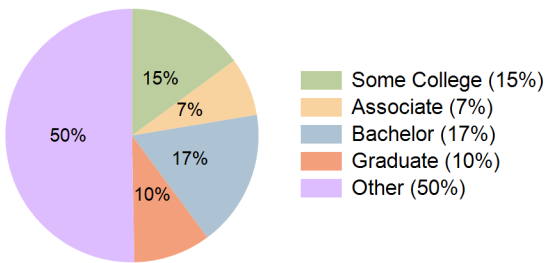
### Current Year Demographics

Current Population	115,571	732,363	2,098,479	843,405
Total Daytime Pop	85,040	542,926	1,608,903	625,245
Workplace Pop	22,510	158,730	464,734	182,396
Average Household Income	\$78,381	\$77,294	\$70,767	\$75,394
Median Household Income	\$63,120	\$59,442	\$53,464	\$57,526
Total Households	34,399	252,031	715,947	292,997
Median Home Value	\$543,277	\$518,093	\$535,404	\$515,262
Bachelors Degree	15.4%	16.9%	16.4%	17.5%
Graduate Degree	6.1%	9.7%	8.7%	9.9%
Total Consumer Spending/Capita (Weekly)	\$442	\$438	\$430	\$436

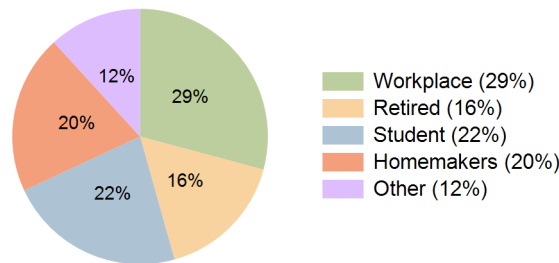
### 2023 Demographic Projections

Projected Population	115,722	735,297	2,120,662	848,382
Projected 5 Year Annual Growth Rate (Pop)	0.0%	0.1%	0.2%	0.1%
Projected Households	34,463	253,183	723,633	294,969
Projected 5 Year Annual Growth Rate (HH)	0.0%	0.1%	0.2%	0.1%

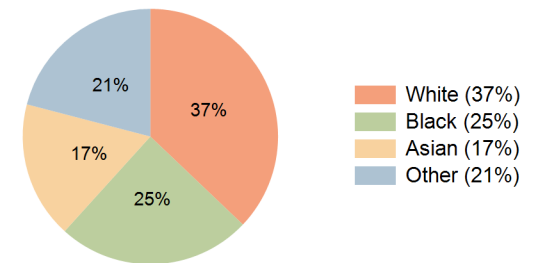
**Education (10 Minute Drive)**



**Daytime Population (10 Minute Drive)**

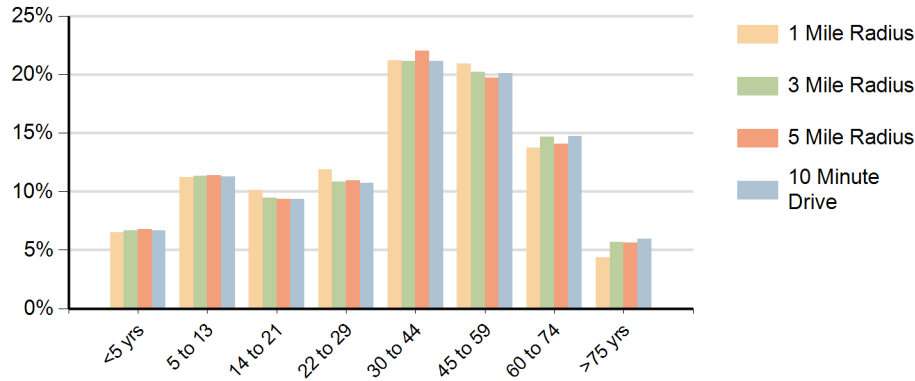


**Race (10 Minute Drive)**

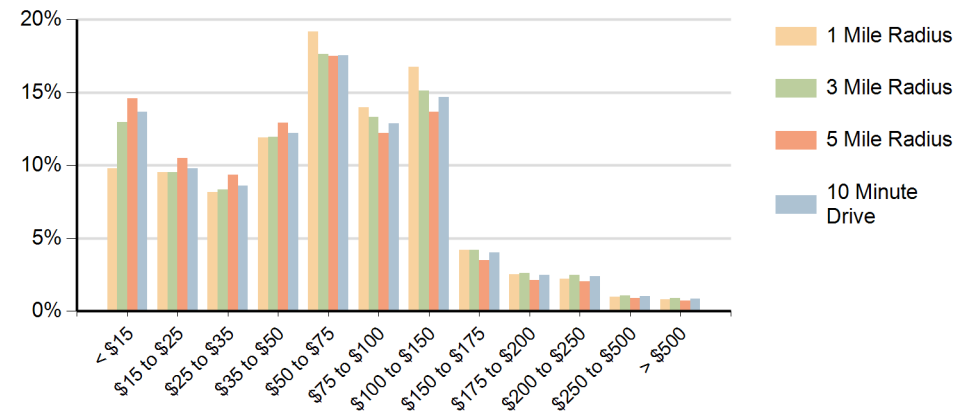


**Hispanic Ethnicity**  
30% Hispanic | 70% Non Hispanic

### Population by Age Range



### Households by Income Range (\$000)



Clocktower Plaza Ozone Park, New York		1 Mile Radius	3 Mile Radius	5 Mile Radius	10 Minute Drive
Population	Current Estimated Population	115,571	732,363	2,098,479	843,405
	2010 Census Population	112,529	705,069	1,996,489	810,376
	2000 Census Population	109,056	698,210	1,960,797	799,856
	Historical Annual Growth 2000 to 2010	0.3%	0.1%	0.2%	0.1%
	Estimated Annual Growth 2010 to 2018	0.3%	0.5%	0.6%	0.5%
	Projected Annual Growth 2018 to 2023	0.0%	0.1%	0.2%	0.1%
Households	Current Estimated Households	34,399	252,031	715,947	292,997
	2010 Census Households	33,443	242,785	681,012	281,404
	2000 Census Households	34,015	241,004	663,912	278,237
	Historical Annual Growth 2000 to 2010	-0.2%	0.1%	0.3%	0.1%
	Estimated Annual Growth 2010 to 2018	0.3%	0.5%	0.6%	0.5%
	Projected Annual Growth 2018 to 2023	0.0%	0.1%	0.2%	0.1%
Population per Household		3.4	2.9	2.9	2.9
Ethnic	Hispanic or Latino Population	47%	31%	31%	30%
	Non Hispanic or Latino Population	53%	69%	69%	70%
Race	White	36.5%	38.4%	30.0%	37.1%
	Black or African American	9.5%	24.0%	34.3%	24.6%
	Asian & Pacific Islander	21.6%	15.4%	16.1%	17.3%
	Other Races	32.4%	22.3%	19.5%	20.9%