

Chastain Square Atlanta, Georgia	1 Mile Radius	3 Mile Radius	5 Mile Radius	10 Minute Drive
-------------------------------------	---------------	---------------	---------------	-----------------

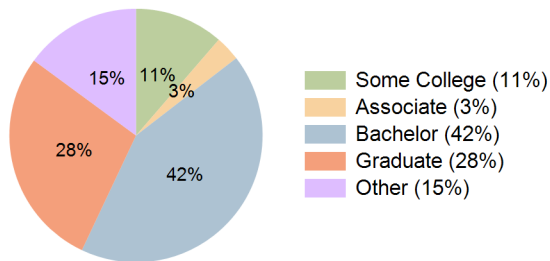
Current Year Demographics

Current Population	9,578	96,018	280,836	111,372
Total Daytime Pop	16,874	168,780	490,115	250,303
Workplace Pop	12,907	125,735	355,064	191,345
Average Household Income	\$179,850	\$162,465	\$135,772	\$147,336
Median Household Income	\$112,164	\$99,740	\$86,039	\$91,777
Total Households	4,122	46,448	134,714	55,191
Median Home Value	\$669,700	\$665,707	\$564,619	\$599,146
Bachelors Degree	49.1%	42.7%	39.2%	42.5%
Graduate Degree	24.0%	29.8%	28.6%	28.0%
Total Consumer Spending/Capita (Weekly)	\$364	\$354	\$342	\$348

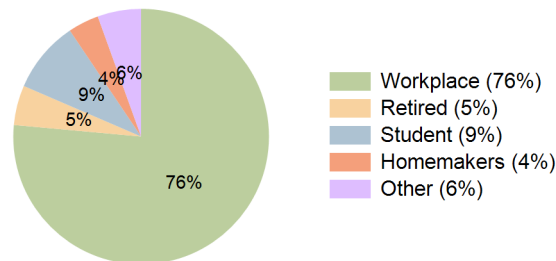
2023 Demographic Projections

Projected Population	9,840	105,924	311,797	123,754
Projected 5 Year Annual Growth Rate (Pop)	0.5%	2.0%	2.1%	2.1%
Projected Households	4,237	51,600	150,421	61,679
Projected 5 Year Annual Growth Rate (HH)	0.6%	2.1%	2.2%	2.2%

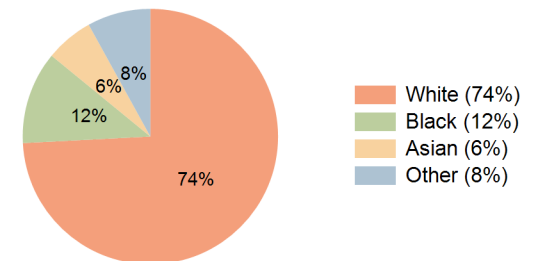
Education (10 Minute Drive)



Daytime Population (10 Minute Drive)

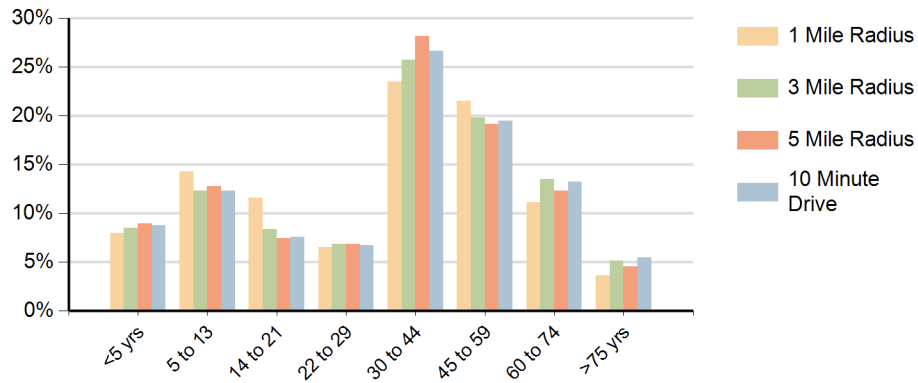


Race (10 Minute Drive)

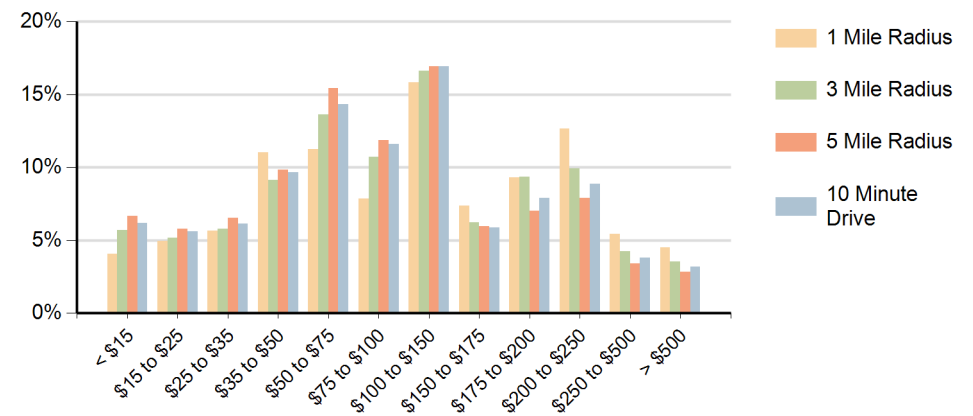


Hispanic Ethnicity
13% Hispanic | 87% Non Hispanic

Population by Age Range



Households by Income Range (\$000)



Chastain Square Atlanta, Georgia		1 Mile Radius	3 Mile Radius	5 Mile Radius	10 Minute Drive
Population	Current Estimated Population	9,578	96,018	280,836	111,372
	2010 Census Population	9,435	81,037	234,458	92,567
	2000 Census Population	8,224	69,461	208,201	75,654
	Historical Annual Growth 2000 to 2010	1.4%	1.6%	1.2%	2.0%
	Estimated Annual Growth 2010 to 2018	0.2%	2.1%	2.2%	2.3%
	Projected Annual Growth 2018 to 2023	0.5%	2.0%	2.1%	2.1%
Households	Current Estimated Households	4,122	46,448	134,714	55,191
	2010 Census Households	4,038	38,789	111,393	45,458
	2000 Census Households	4,047	33,235	97,294	36,688
	Historical Annual Growth 2000 to 2010	0.0%	1.6%	1.4%	2.2%
	Estimated Annual Growth 2010 to 2018	0.3%	2.2%	2.3%	2.4%
	Projected Annual Growth 2018 to 2023	0.6%	2.1%	2.2%	2.2%
	Population per Household	2.3	2.0	2.1	2.0
Ethnic	Hispanic or Latino Population	15%	12%	16%	13%
	Non Hispanic or Latino Population	85%	88%	84%	87%
Race	White	80.9%	77.4%	70.5%	74.2%
	Black or African American	6.7%	10.2%	12.8%	11.7%
	Asian & Pacific Islander	3.8%	4.8%	6.4%	6.1%
	Other Races	8.6%	7.6%	10.2%	8.0%