

Cashmere Corners Port St. Lucie, Florida	1 Mile Radius	3 Mile Radius	5 Mile Radius	10 Minute Drive
---	---------------	---------------	---------------	-----------------

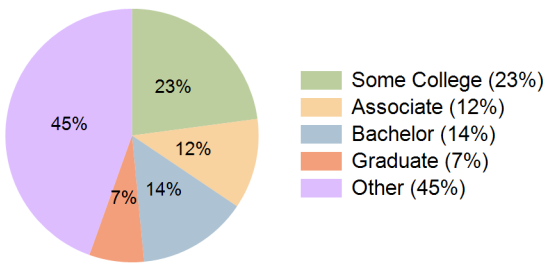
### Current Year Demographics

Current Population	8,652	68,201	144,308	108,713
Total Daytime Pop	13,325	58,454	123,395	93,043
Workplace Pop	3,217	15,245	32,564	24,054
Average Household Income	\$63,881	\$64,665	\$65,203	\$65,878
Median Household Income	\$48,552	\$49,507	\$50,145	\$50,600
Total Households	3,922	26,007	55,313	40,648
Median Home Value	\$361,872	\$332,430	\$319,622	\$329,367
Bachelors Degree	17.2%	14.6%	14.1%	14.1%
Graduate Degree	10.6%	6.9%	7.5%	7.0%
Total Consumer Spending/Capita (Weekly)	\$324	\$320	\$320	\$320

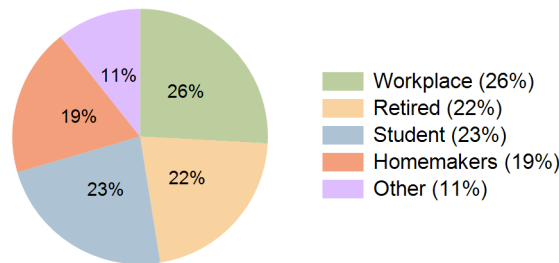
### 2023 Demographic Projections

Projected Population	9,698	76,762	164,759	122,818
Projected 5 Year Annual Growth Rate (Pop)	2.3%	2.4%	2.7%	2.5%
Projected Households	4,405	29,312	63,341	46,010
Projected 5 Year Annual Growth Rate (HH)	2.3%	2.4%	2.7%	2.5%

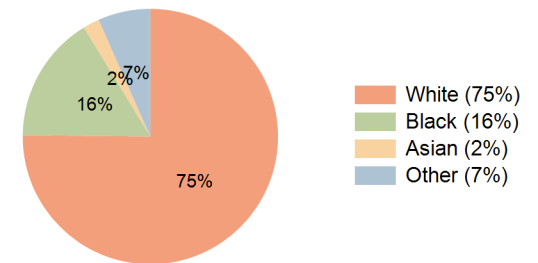
Education (10 Minute Drive)



Daytime Population (10 Minute Drive)

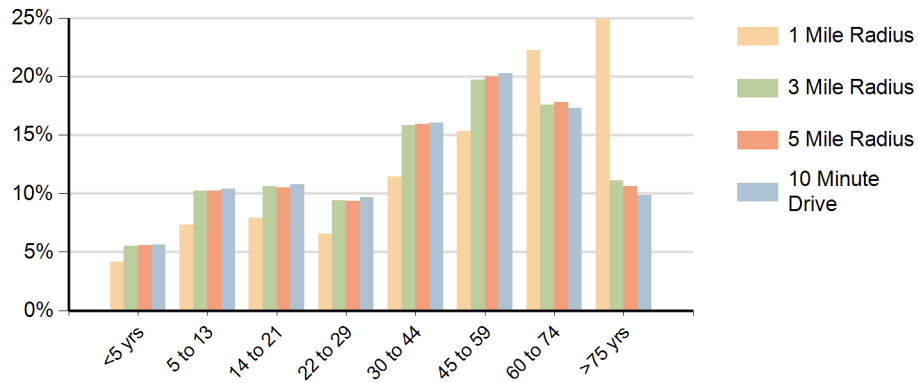


Race (10 Minute Drive)

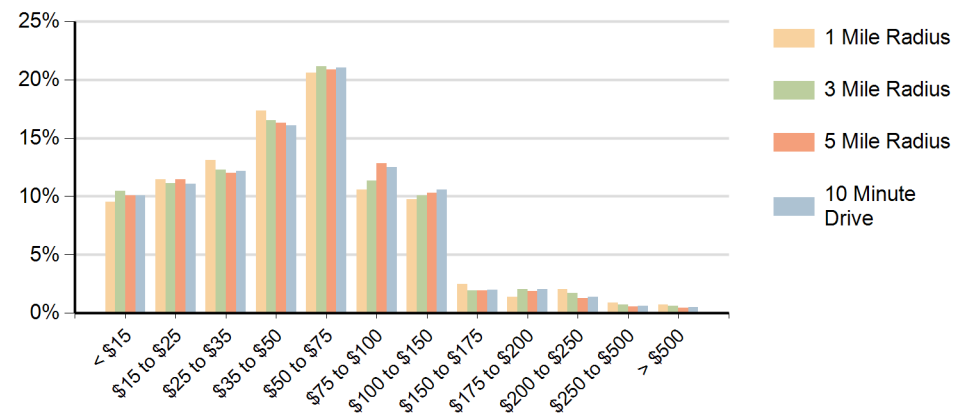


**Hispanic Ethnicity**  
18% Hispanic | 82% Non Hispanic

### Population by Age Range



### Households by Income Range (\$000)



Cashmere Corners Port St. Lucie, Florida		1 Mile Radius	3 Mile Radius	5 Mile Radius	10 Minute Drive
Population	Current Estimated Population	8,652	68,201	144,308	108,713
	2010 Census Population	7,747	60,561	125,361	96,155
	2000 Census Population	3,651	32,614	70,259	53,303
	Historical Annual Growth 2000 to 2010	7.8%	6.4%	6.0%	6.1%
	Estimated Annual Growth 2010 to 2018	1.3%	1.5%	1.7%	1.5%
	Projected Annual Growth 2018 to 2023	2.3%	2.4%	2.7%	2.5%
Households	Current Estimated Households	3,922	26,007	55,313	40,648
	2010 Census Households	3,502	23,054	47,787	35,857
	2000 Census Households	1,672	12,644	27,731	20,386
	Historical Annual Growth 2000 to 2010	7.7%	6.2%	5.6%	5.8%
	Estimated Annual Growth 2010 to 2018	1.4%	1.5%	1.8%	1.5%
	Projected Annual Growth 2018 to 2023	2.3%	2.4%	2.7%	2.5%
Ethnic	Population per Household	2.2	2.6	2.6	2.7
	Hispanic or Latino Population	14%	18%	18%	18%
Race	Non Hispanic or Latino Population	86%	82%	82%	82%
	White	84.1%	75.4%	76.3%	75.2%
	Black or African American	9.7%	15.8%	15.3%	16.1%
	Asian & Pacific Islander	1.9%	2.2%	2.0%	2.1%
	Other Races	4.3%	6.6%	6.4%	6.6%