

Brookside Plaza
Enfield, Connecticut

1 Mile Radius

3 Mile Radius

5 Mile Radius

10 Minute Drive

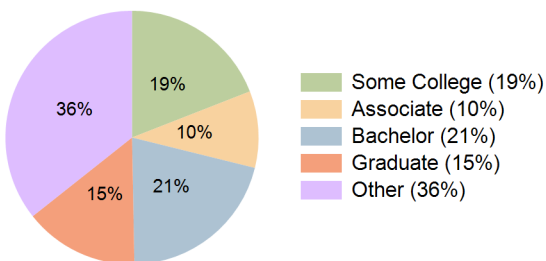
Current Year Demographics

Current Population	4,243	38,039	82,615	72,696
Total Daytime Pop	12,711	36,891	78,585	75,896
Workplace Pop	6,636	14,081	28,032	31,086
Average Household Income	\$79,923	\$96,082	\$113,794	\$104,948
Median Household Income	\$63,193	\$80,060	\$89,247	\$83,403
Total Households	1,793	15,167	29,619	28,061
Median Home Value	\$233,852	\$250,382	\$288,077	\$275,896
Bachelors Degree	17.3%	19.8%	20.7%	20.9%
Graduate Degree	9.9%	12.5%	14.3%	14.6%
Total Consumer Spending/Capita (Weekly)	\$387	\$400	\$408	\$403

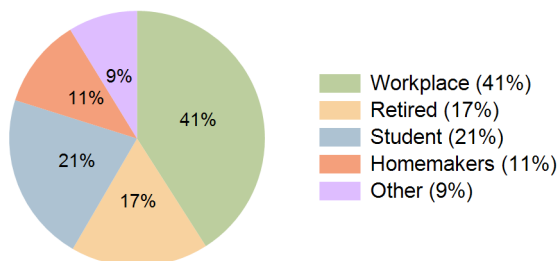
2027 Demographic Projections

Projected Population	4,236	38,177	82,851	72,818
Projected 5 Year Annual Growth Rate (Pop)	0.0%	0.1%	0.1%	0.0%
Projected Households	1,789	15,218	29,706	28,109
Projected 5 Year Annual Growth Rate (HH)	-0.1%	0.1%	0.1%	0.0%

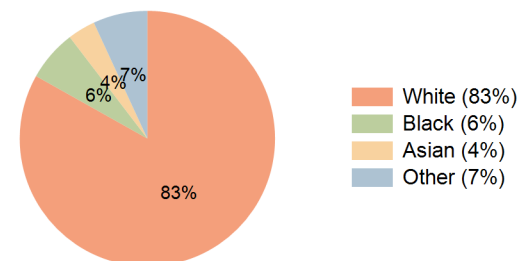
Education (10 Minute Drive)



Daytime Population (10 Minute Drive)

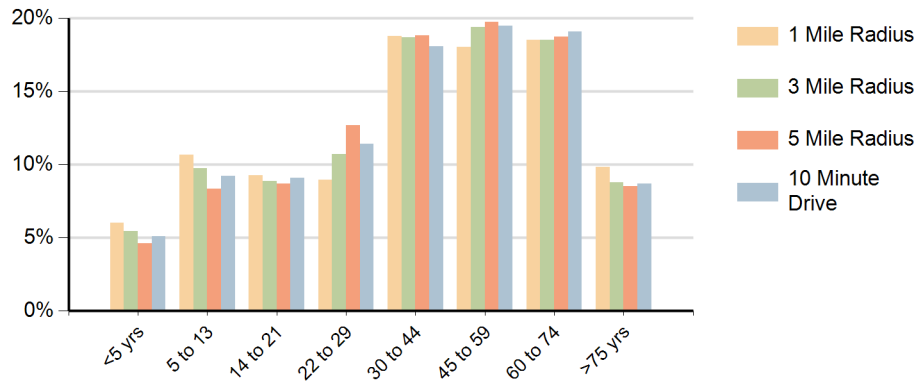


Race (10 Minute Drive)

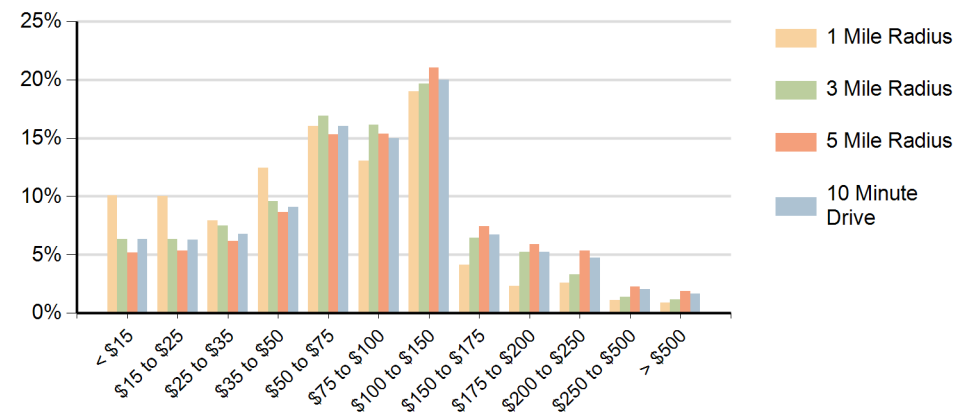


Hispanic Ethnicity
9% Hispanic | 91% Non Hispanic

Population by Age Range



Households by Income Range (\$000)



Brookside Plaza Enfield, Connecticut		1 Mile Radius	3 Mile Radius	5 Mile Radius	10 Minute Drive
Population	Current Estimated Population	4,243	38,039	82,615	72,696
	2010 Census Population	4,384	38,212	81,748	72,167
	2000 Census Population	4,422	37,909	77,542	71,840
	Historical Annual Growth 2000 to 2010	-0.1%	0.1%	0.5%	0.0%
	Estimated Annual Growth 2010 to 2022	-0.3%	0.0%	0.1%	0.1%
	Projected Annual Growth 2022 to 2027	0.0%	0.1%	0.1%	0.0%
Households	Current Estimated Households	1,793	15,167	29,619	28,061
	2010 Census Households	1,853	15,235	29,262	27,836
	2000 Census Households	1,903	14,873	27,976	27,006
	Historical Annual Growth 2000 to 2010	-0.3%	0.2%	0.5%	0.3%
	Estimated Annual Growth 2010 to 2022	-0.3%	0.0%	0.1%	0.1%
	Projected Annual Growth 2022 to 2027	-0.1%	0.1%	0.1%	0.0%
	Population per Household	2.3	2.4	2.5	2.4
Ethnic	Hispanic or Latino Population	7%	8%	8%	9%
	Non Hispanic or Latino Population	93%	92%	92%	91%
Race	White	85.5%	84.8%	82.3%	83.1%
	Black or African American	5.1%	5.2%	7.5%	6.5%
	Asian & Pacific Islander	2.2%	2.7%	3.1%	3.5%
	Other Races	7.3%	7.3%	7.0%	6.9%