

Broadway Plaza Outparcel
Bronx, New York

1 Mile Radius

3 Mile Radius

5 Mile Radius

10 Minute Drive

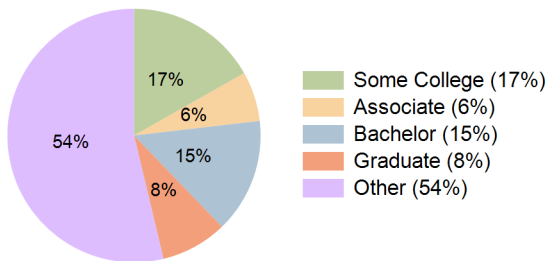
Current Year Demographics

Current Population	139,356	916,827	2,023,947	1,034,022
Total Daytime Pop	125,999	780,434	1,734,469	890,057
Workplace Pop	26,398	199,052	488,115	232,703
Average Household Income	\$71,996	\$57,546	\$61,361	\$57,383
Median Household Income	\$51,560	\$39,519	\$41,453	\$39,575
Total Households	53,556	324,212	732,385	368,972
Median Home Value	\$357,685	\$451,505	\$452,127	\$428,970
Bachelors Degree	17.6%	14.2%	15.0%	14.6%
Graduate Degree	13.5%	8.5%	8.8%	8.5%
Total Consumer Spending/Capita (Weekly)	\$383	\$369	\$375	\$369

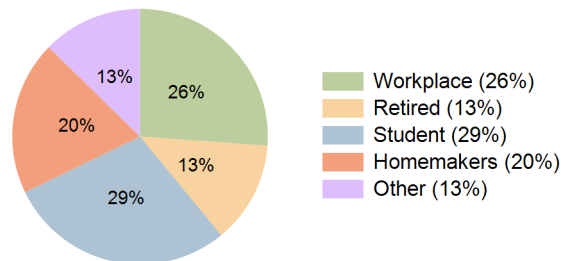
2023 Demographic Projections

Projected Population	141,071	925,996	2,055,764	1,043,210
Projected 5 Year Annual Growth Rate (Pop)	0.2%	0.2%	0.3%	0.2%
Projected Households	54,156	327,300	744,232	372,138
Projected 5 Year Annual Growth Rate (HH)	0.2%	0.2%	0.3%	0.2%

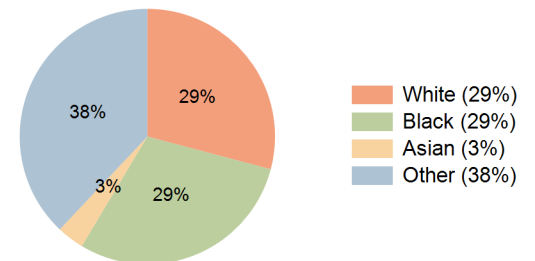
Education (10 Minute Drive)



Daytime Population (10 Minute Drive)

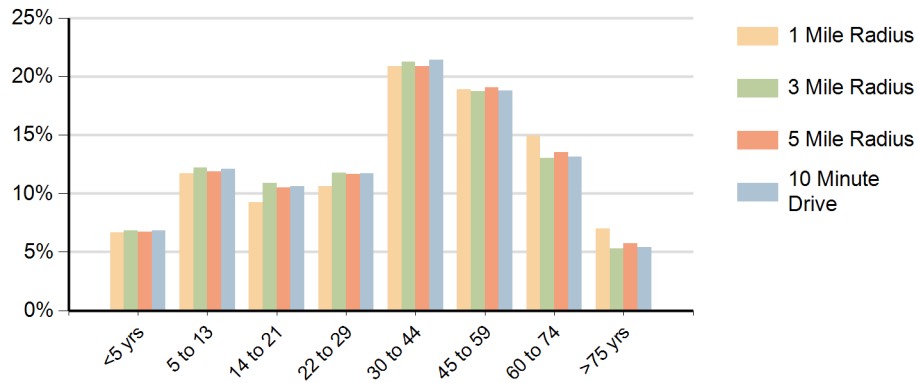


Race (10 Minute Drive)

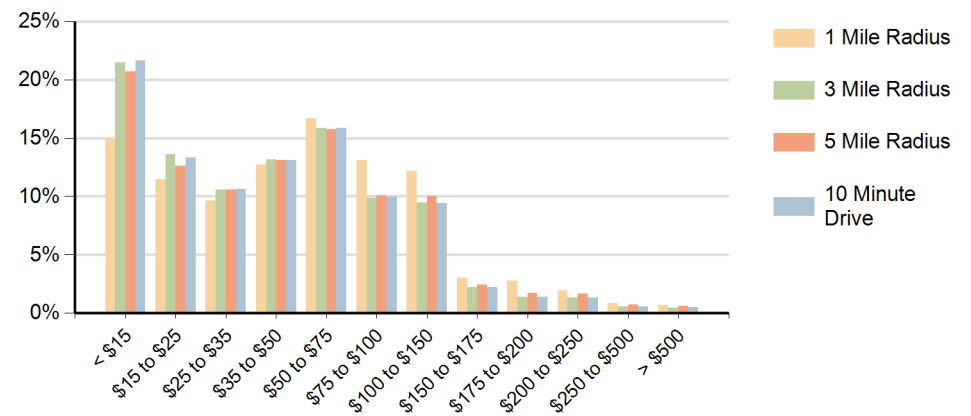


Hispanic Ethnicity
57% Hispanic | 43% Non Hispanic

Population by Age Range



Households by Income Range (\$000)



Broadway Plaza Outparcel Bronx, New York		1 Mile Radius	3 Mile Radius	5 Mile Radius	10 Minute Drive
Population	Current Estimated Population	139,356	916,827	2,023,947	1,034,022
	2010 Census Population	133,712	882,772	1,929,436	995,130
	2000 Census Population	134,485	877,296	1,892,086	994,363
	Historical Annual Growth 2000 to 2010	-0.1%	0.1%	0.2%	0.0%
	Estimated Annual Growth 2010 to 2018	0.5%	0.5%	0.6%	0.5%
	Projected Annual Growth 2018 to 2023	0.2%	0.2%	0.3%	0.2%
Households	Current Estimated Households	53,556	324,212	732,385	368,972
	2010 Census Households	51,428	312,069	696,804	354,857
	2000 Census Households	51,382	305,995	675,130	348,131
	Historical Annual Growth 2000 to 2010	0.0%	0.2%	0.3%	0.2%
	Estimated Annual Growth 2010 to 2018	0.5%	0.5%	0.6%	0.5%
	Projected Annual Growth 2018 to 2023	0.2%	0.2%	0.3%	0.2%
	Population per Household	2.5	2.8	2.7	2.7
Ethnic	Hispanic or Latino Population	57%	58%	51%	57%
	Non Hispanic or Latino Population	43%	42%	49%	43%
Race	White	39.2%	29.3%	28.2%	29.1%
	Black or African American	18.6%	28.7%	34.0%	29.5%
	Asian & Pacific Islander	4.8%	3.7%	4.9%	3.5%
	Other Races	37.4%	38.2%	32.9%	38.0%