

**BridgeMill Market**  
Canton, Georgia

**1 Mile Radius**

**3 Mile Radius**

**5 Mile Radius**

**10 Minute Drive**

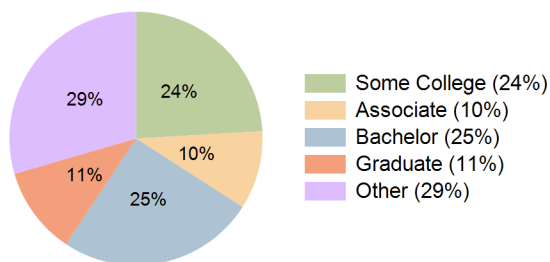
### Current Year Demographics

Current Population	5,222	36,617	91,598	45,603
Total Daytime Pop	4,278	28,195	76,869	36,189
Workplace Pop	655	6,482	19,978	8,612
Average Household Income	\$141,863	\$117,785	\$112,276	\$111,666
Median Household Income	\$121,322	\$98,175	\$92,046	\$94,371
Total Households	1,757	12,827	31,898	16,125
Median Home Value	\$447,999	\$425,709	\$431,453	\$405,921
Bachelors Degree	31.0%	26.8%	25.7%	25.3%
Graduate Degree	12.6%	11.5%	11.6%	11.2%
Total Consumer Spending/Capita (Weekly)	\$363	\$362	\$361	\$361

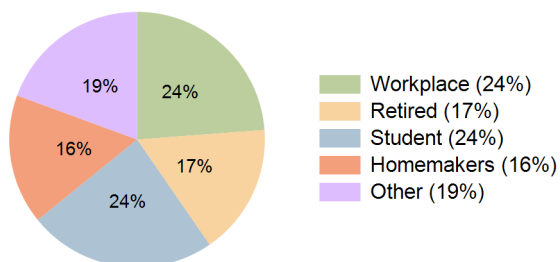
### 2027 Demographic Projections

Projected Population	5,697	39,807	98,332	49,491
Projected 5 Year Annual Growth Rate (Pop)	1.8%	1.7%	1.4%	1.7%
Projected Households	1,917	13,955	34,288	17,513
Projected 5 Year Annual Growth Rate (HH)	1.8%	1.7%	1.5%	1.7%

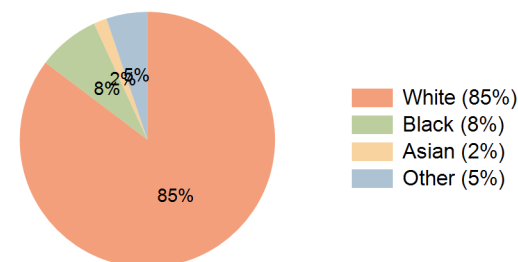
**Education (10 Minute Drive)**



**Daytime Population (10 Minute Drive)**



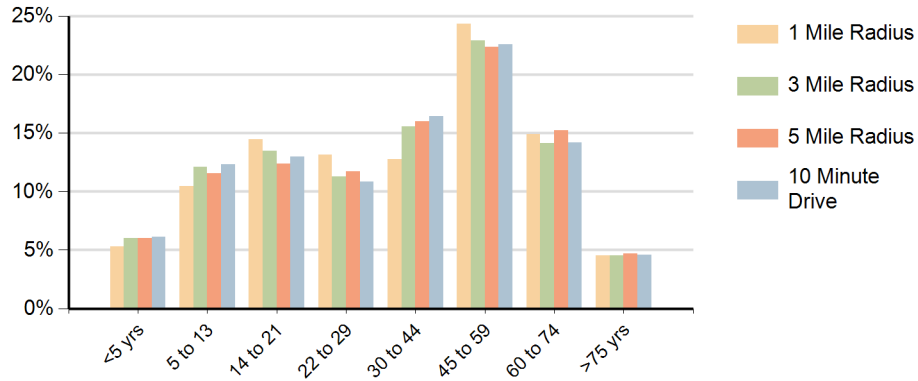
**Race (10 Minute Drive)**



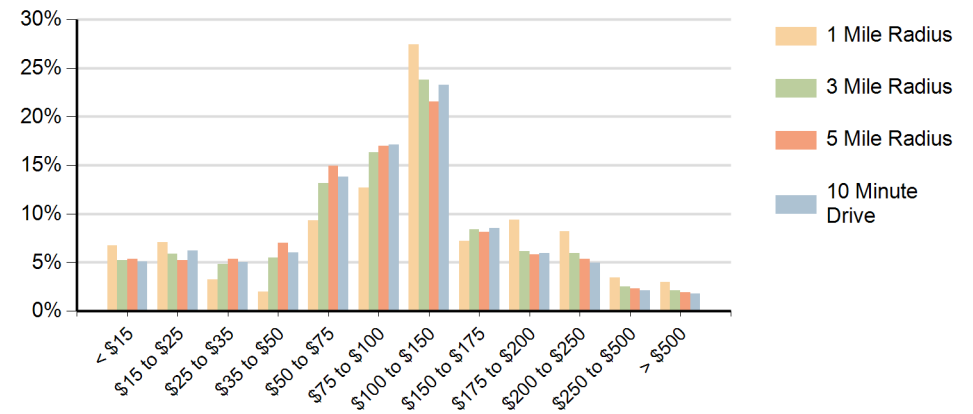
**Hispanic Ethnicity**

8% Hispanic | 92% Non Hispanic

### Population by Age Range



### Households by Income Range (\$000)



BridgeMill Market Canton, Georgia		1 Mile Radius	3 Mile Radius	5 Mile Radius	10 Minute Drive
Population	Current Estimated Population	5,222	36,617	91,598	45,603
	2010 Census Population	4,184	29,174	74,898	36,348
	2000 Census Population	1,875	13,259	47,519	18,394
	Historical Annual Growth 2000 to 2010	8.4%	8.2%	4.7%	7.0%
	Estimated Annual Growth 2010 to 2022	1.8%	1.9%	1.7%	1.9%
	Projected Annual Growth 2022 to 2027	1.8%	1.7%	1.4%	1.7%
Households	Current Estimated Households	1,757	12,827	31,898	16,125
	2010 Census Households	1,406	10,198	25,987	12,824
	2000 Census Households	616	4,518	16,079	6,362
	Historical Annual Growth 2000 to 2010	8.6%	8.5%	4.9%	7.3%
	Estimated Annual Growth 2010 to 2022	1.8%	1.9%	1.7%	1.9%
	Projected Annual Growth 2022 to 2027	1.8%	1.7%	1.5%	1.7%
	Population per Household	3.0	2.9	2.9	2.8
Ethnic	Hispanic or Latino Population	7%	8%	9%	8%
	Non Hispanic or Latino Population	93%	92%	91%	92%
Race	White	89.3%	85.7%	86.2%	85.3%
	Black or African American	6.2%	8.0%	6.7%	7.8%
	Asian & Pacific Islander	1.4%	1.6%	1.7%	1.7%
	Other Races	3.1%	4.8%	5.5%	5.2%