

Bluffs Square Shoppes
Jupiter, Florida

1 Mile Radius

3 Mile Radius

5 Mile Radius

10 Minute Drive

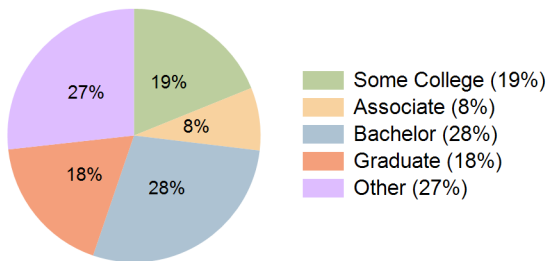
Current Year Demographics

Current Population	5,466	30,707	108,361	68,962
Total Daytime Pop	5,188	32,612	119,765	88,631
Workplace Pop	2,284	13,302	56,924	47,117
Average Household Income	\$102,905	\$139,578	\$116,613	\$122,350
Median Household Income	\$73,556	\$88,197	\$76,665	\$76,074
Total Households	3,042	15,307	49,676	32,748
Median Home Value	\$561,664	\$663,270	\$547,974	\$585,364
Bachelors Degree	27.7%	31.1%	28.3%	28.4%
Graduate Degree	16.3%	21.3%	17.0%	18.0%
Total Consumer Spending/Capita (Weekly)	\$371	\$380	\$365	\$366

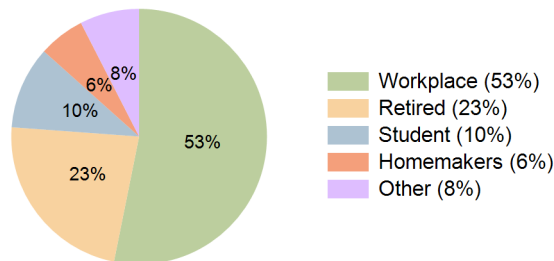
2023 Demographic Projections

Projected Population	5,610	32,086	115,719	72,509
Projected 5 Year Annual Growth Rate (Pop)	0.5%	0.9%	1.3%	1.0%
Projected Households	3,123	15,961	52,929	34,361
Projected 5 Year Annual Growth Rate (HH)	0.5%	0.8%	1.3%	1.0%

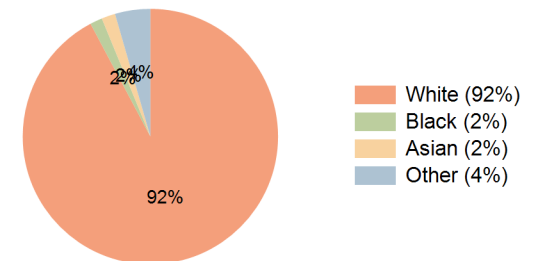
Education (10 Minute Drive)



Daytime Population (10 Minute Drive)



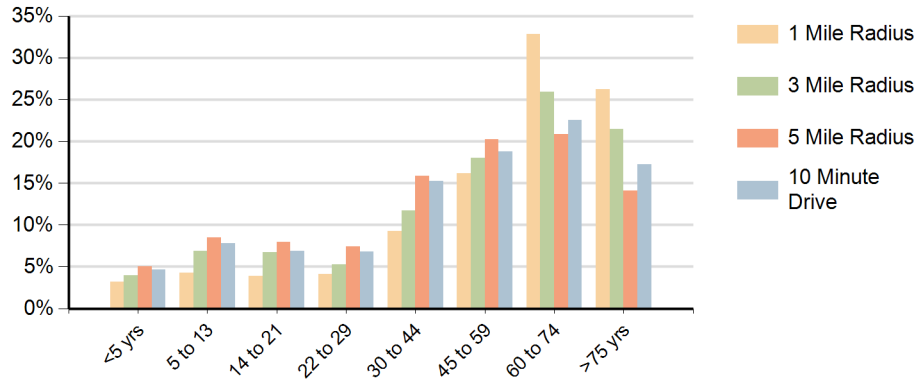
Race (10 Minute Drive)



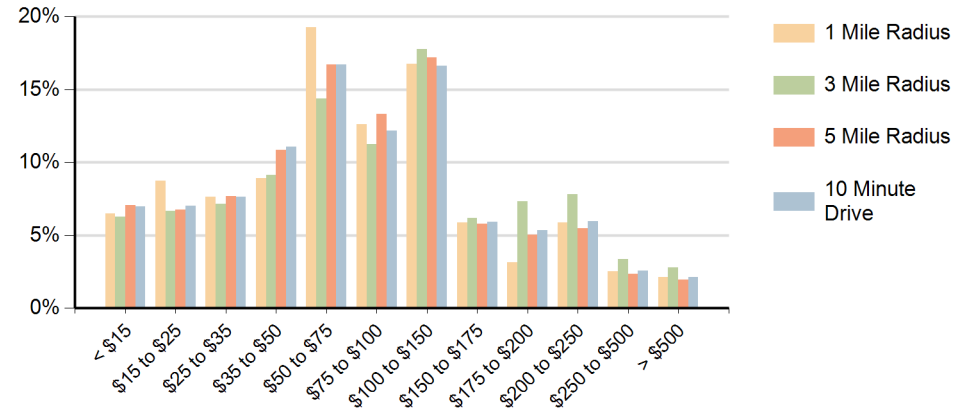
Hispanic Ethnicity

11% Hispanic | 89% Non Hispanic

Population by Age Range



Households by Income Range (\$000)



Bluffs Square Shoppes Jupiter, Florida		1 Mile Radius	3 Mile Radius	5 Mile Radius	10 Minute Drive
Population	Current Estimated Population	5,466	30,707	108,361	68,962
	2010 Census Population	5,156	28,189	95,733	62,715
	2000 Census Population	5,131	21,676	72,716	48,499
	Historical Annual Growth 2000 to 2010	0.0%	2.7%	2.8%	2.6%
	Estimated Annual Growth 2010 to 2018	0.7%	1.0%	1.5%	1.2%
	Projected Annual Growth 2018 to 2023	0.5%	0.9%	1.3%	1.0%
Households	Current Estimated Households	3,042	15,307	49,676	32,748
	2010 Census Households	2,863	14,077	43,968	29,817
	2000 Census Households	2,673	10,666	32,984	22,974
	Historical Annual Growth 2000 to 2010	0.7%	2.8%	2.9%	2.6%
	Estimated Annual Growth 2010 to 2018	0.7%	1.0%	1.5%	1.1%
	Projected Annual Growth 2018 to 2023	0.5%	0.8%	1.3%	1.0%
	Population per Household	1.8	2.0	2.2	2.1
Ethnic	Hispanic or Latino Population	3%	6%	11%	11%
	Non Hispanic or Latino Population	97%	94%	89%	89%
Race	White	97.4%	95.8%	91.4%	92.2%
	Black or African American	0.3%	1.0%	2.0%	1.6%
	Asian & Pacific Islander	1.4%	1.5%	2.4%	1.7%
	Other Races	1.0%	1.8%	4.2%	4.5%