

Bluebonnet Village
Baton Rouge, Louisiana

1 Mile Radius

3 Mile Radius

5 Mile Radius

10 Minute Drive

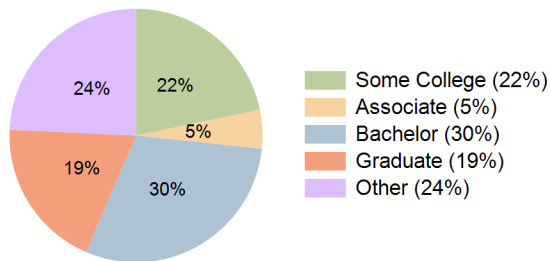
Current Year Demographics

Current Population	9,892	67,863	150,473	103,395
Total Daytime Pop	15,717	115,012	256,457	195,201
Workplace Pop	12,405	85,313	170,535	144,028
Average Household Income	\$99,020	\$99,099	\$92,810	\$98,255
Median Household Income	\$68,881	\$69,839	\$64,161	\$67,338
Total Households	4,486	28,656	64,897	44,362
Median Home Value	\$236,937	\$248,977	\$246,898	\$252,198
Bachelors Degree	26.4%	30.0%	29.4%	29.8%
Graduate Degree	25.7%	20.0%	19.2%	19.2%
Total Consumer Spending/Capita (Weekly)	\$342	\$343	\$337	\$342

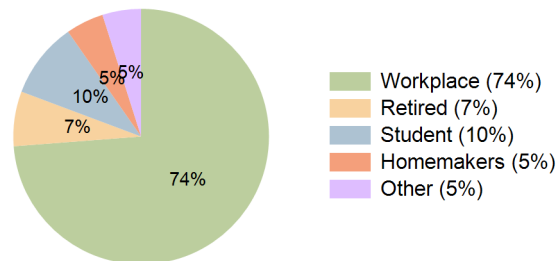
2023 Demographic Projections

Projected Population	10,394	70,029	152,933	105,463
Projected 5 Year Annual Growth Rate (Pop)	1.0%	0.6%	0.3%	0.4%
Projected Households	4,720	29,524	65,832	45,162
Projected 5 Year Annual Growth Rate (HH)	1.0%	0.6%	0.3%	0.4%

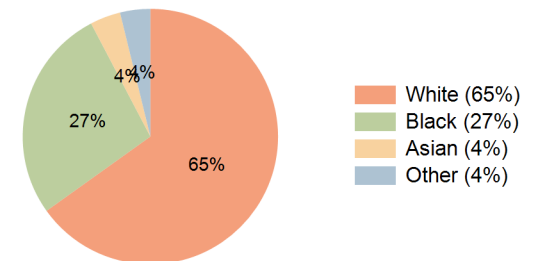
Education (10 Minute Drive)



Daytime Population (10 Minute Drive)

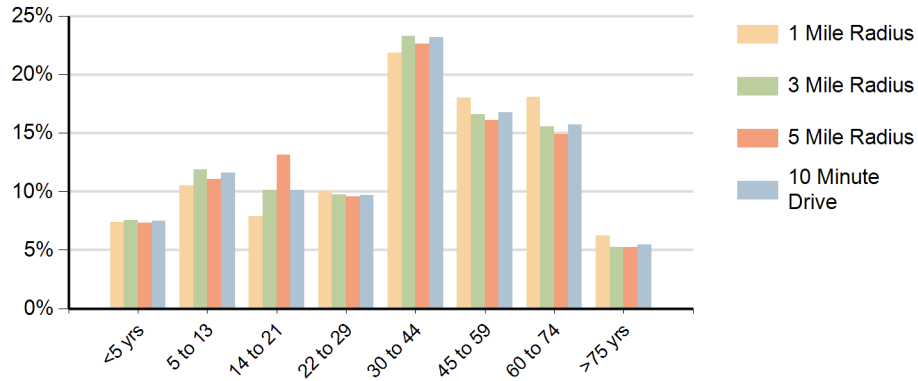


Race (10 Minute Drive)

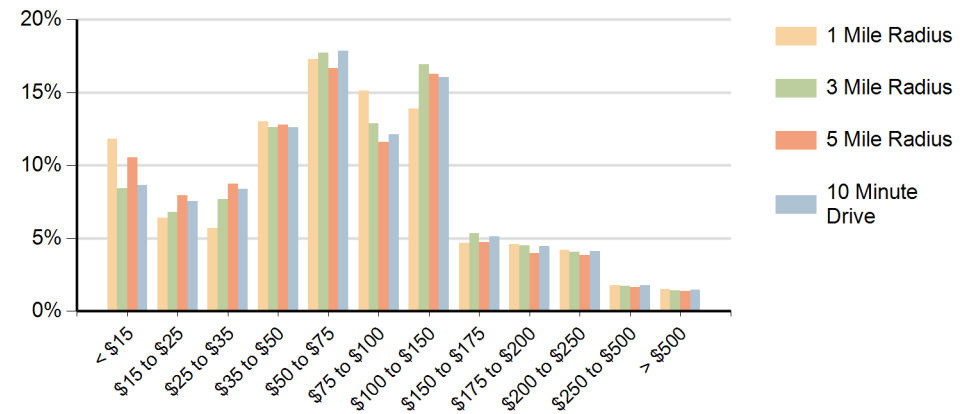


Hispanic Ethnicity
6% Hispanic | 94% Non Hispanic

Population by Age Range



Households by Income Range (\$000)



Bluebonnet Village Baton Rouge, Louisiana		1 Mile Radius	3 Mile Radius	5 Mile Radius	10 Minute Drive
Population	Current Estimated Population	9,892	67,863	150,473	103,395
	2010 Census Population	8,998	63,790	145,354	99,391
	2000 Census Population	7,950	56,099	128,104	87,488
	Historical Annual Growth 2000 to 2010	1.2%	1.3%	1.3%	1.3%
	Estimated Annual Growth 2010 to 2018	1.2%	0.8%	0.4%	0.5%
	Projected Annual Growth 2018 to 2023	1.0%	0.6%	0.3%	0.4%
Households	Current Estimated Households	4,486	28,656	64,897	44,362
	2010 Census Households	4,050	27,040	62,890	42,786
	2000 Census Households	3,093	22,984	54,027	36,712
	Historical Annual Growth 2000 to 2010	2.7%	1.6%	1.5%	1.5%
	Estimated Annual Growth 2010 to 2018	1.2%	0.7%	0.4%	0.4%
	Projected Annual Growth 2018 to 2023	1.0%	0.6%	0.3%	0.4%
	Population per Household	2.2	2.4	2.3	2.3
Ethnic	Hispanic or Latino Population	3%	6%	5%	6%
	Non Hispanic or Latino Population	97%	94%	95%	94%
Race	White	59.8%	64.5%	67.7%	65.1%
	Black or African American	33.0%	27.6%	24.7%	27.2%
	Asian & Pacific Islander	5.3%	3.9%	4.1%	3.9%
	Other Races	2.0%	4.0%	3.6%	3.8%