

Bird Ludlam Miami, Florida	1 Mile Radius	3 Mile Radius	5 Mile Radius	10 Minute Drive
-------------------------------	---------------	---------------	---------------	-----------------

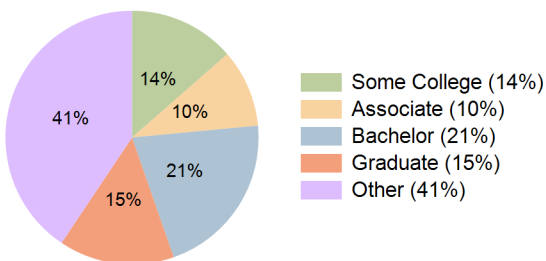
### Current Year Demographics

Current Population	17,590	167,077	453,600	249,410
Total Daytime Pop	23,442	200,899	575,666	329,480
Workplace Pop	13,457	92,676	276,894	172,447
Average Household Income	\$82,802	\$96,272	\$85,895	\$88,486
Median Household Income	\$63,104	\$61,394	\$52,435	\$57,329
Total Households	6,515	59,021	164,840	89,979
Median Home Value	\$561,349	\$606,156	\$519,284	\$555,478
Bachelors Degree	19.5%	20.7%	20.5%	21.2%
Graduate Degree	17.1%	15.7%	13.6%	14.7%
Total Consumer Spending/Capita (Weekly)	\$347	\$349	\$340	\$344

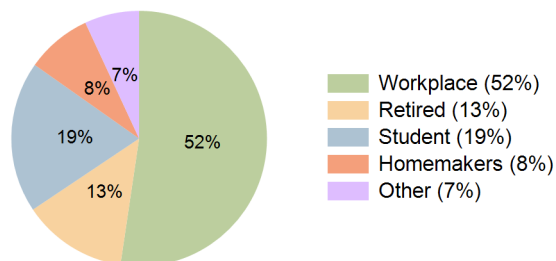
### 2023 Demographic Projections

Projected Population	17,457	168,866	459,755	252,419
Projected 5 Year Annual Growth Rate (Pop)	-0.2%	0.2%	0.3%	0.2%
Projected Households	6,459	59,769	167,143	91,193
Projected 5 Year Annual Growth Rate (HH)	-0.2%	0.3%	0.3%	0.3%

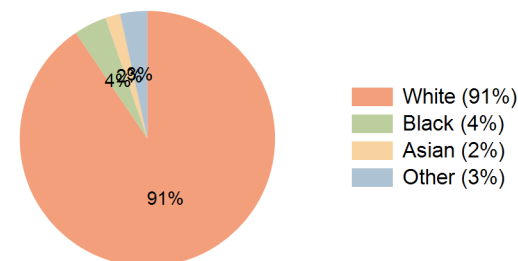
Education (10 Minute Drive)



Daytime Population (10 Minute Drive)

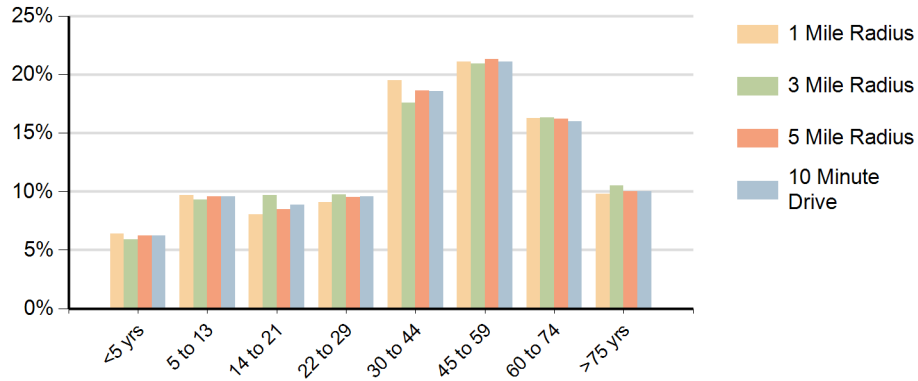


Race (10 Minute Drive)

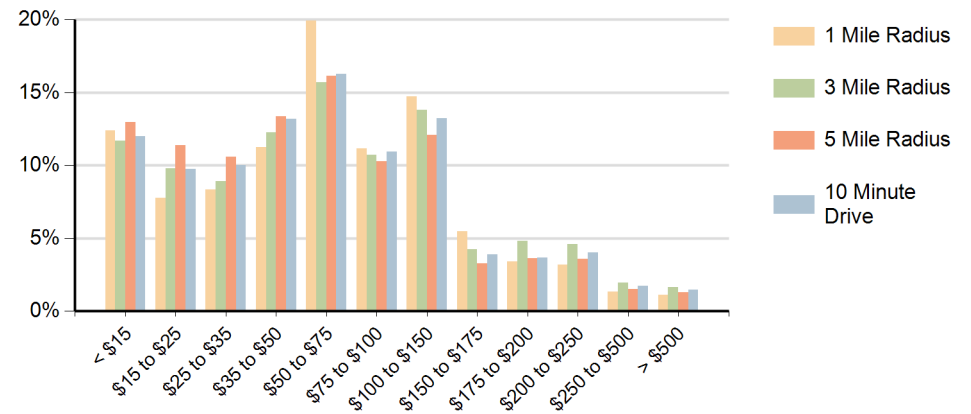


**Hispanic Ethnicity**  
76% Hispanic | 24% Non Hispanic

### Population by Age Range



### Households by Income Range (\$000)



Bird Ludlam Miami, Florida		1 Mile Radius	3 Mile Radius	5 Mile Radius	10 Minute Drive
Population	Current Estimated Population	17,590	167,077	453,600	249,410
	2010 Census Population	17,527	161,185	438,555	240,972
	2000 Census Population	17,276	155,107	422,239	231,302
	Historical Annual Growth 2000 to 2010	0.1%	0.4%	0.4%	0.4%
	Estimated Annual Growth 2010 to 2018	0.0%	0.4%	0.4%	0.4%
	Projected Annual Growth 2018 to 2023	-0.2%	0.2%	0.3%	0.2%
Households	Current Estimated Households	6,515	59,021	164,840	89,979
	2010 Census Households	6,493	56,821	159,287	86,783
	2000 Census Households	6,353	55,187	152,210	83,201
	Historical Annual Growth 2000 to 2010	0.2%	0.3%	0.5%	0.4%
	Estimated Annual Growth 2010 to 2018	0.0%	0.5%	0.4%	0.4%
	Projected Annual Growth 2018 to 2023	-0.2%	0.3%	0.3%	0.3%
	Population per Household	2.7	2.7	2.7	2.7
Ethnic	Hispanic or Latino Population	76%	75%	79%	76%
	Non Hispanic or Latino Population	24%	25%	21%	24%
Race	White	93.3%	91.4%	91.1%	90.5%
	Black or African American	1.7%	3.8%	3.7%	4.2%
	Asian & Pacific Islander	1.5%	1.7%	1.6%	1.9%
	Other Races	3.5%	3.1%	3.6%	3.4%