

Aventura Square
Aventura, Florida

1 Mile Radius

3 Mile Radius

5 Mile Radius

10 Minute Drive

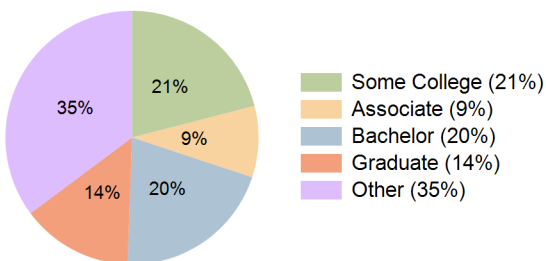
Current Year Demographics

| | | | | |
|---|-----------|-----------|-----------|-----------|
| Current Population | 29,671 | 192,837 | 414,100 | 213,015 |
| Total Daytime Pop | 38,161 | 192,201 | 416,231 | 219,297 |
| Workplace Pop | 21,085 | 82,035 | 187,348 | 96,796 |
| Average Household Income | \$92,173 | \$77,999 | \$70,802 | \$76,219 |
| Median Household Income | \$59,857 | \$50,202 | \$47,301 | \$48,915 |
| Total Households | 14,091 | 84,941 | 169,320 | 92,429 |
| Median Home Value | \$413,067 | \$380,125 | \$354,145 | \$382,458 |
| Bachelors Degree | 26.4% | 21.2% | 18.1% | 20.5% |
| Graduate Degree | 21.2% | 15.0% | 11.5% | 14.3% |
| Total Consumer Spending/Capita (Weekly) | \$350 | \$335 | \$328 | \$333 |

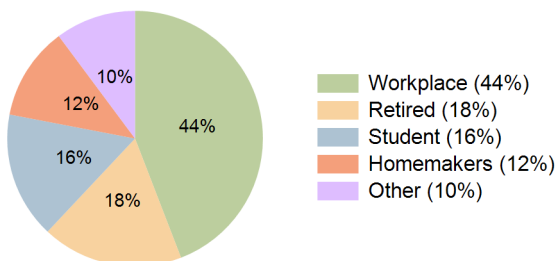
2023 Demographic Projections

| | | | | |
|---|--------|---------|---------|---------|
| Projected Population | 32,979 | 205,323 | 428,913 | 224,942 |
| Projected 5 Year Annual Growth Rate (Pop) | 2.1% | 1.3% | 0.7% | 1.1% |
| Projected Households | 15,687 | 90,843 | 176,278 | 98,102 |
| Projected 5 Year Annual Growth Rate (HH) | 2.2% | 1.4% | 0.8% | 1.2% |

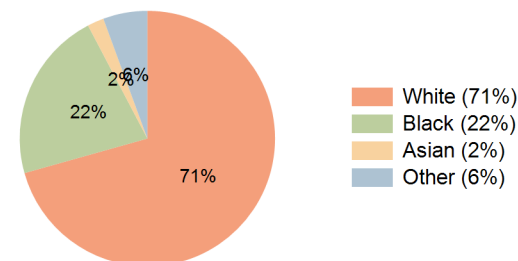
Education (10 Minute Drive)



Daytime Population (10 Minute Drive)

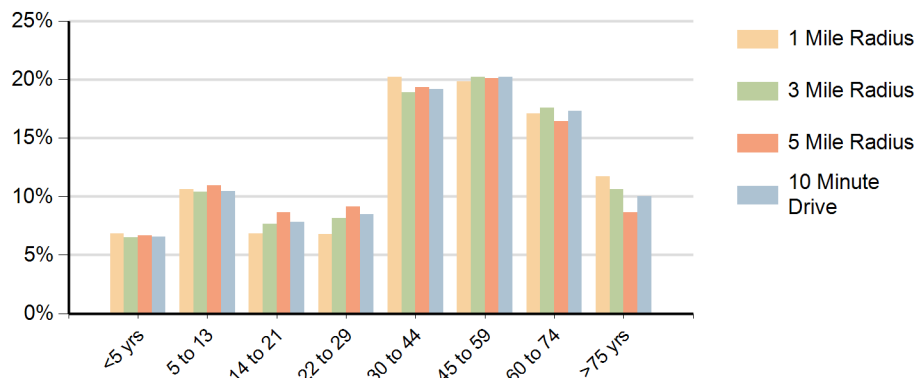


Race (10 Minute Drive)

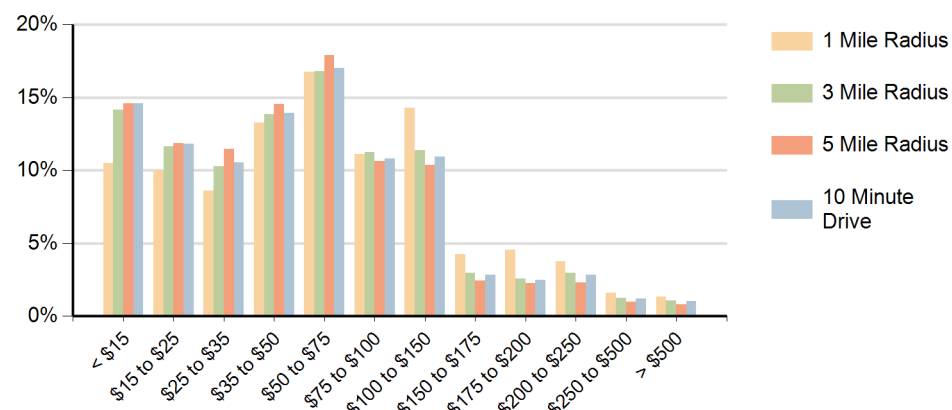


Hispanic Ethnicity
36% Hispanic | 64% Non Hispanic

Population by Age Range



Households by Income Range (\$000)



| Aventura Square Aventura, Florida | | 1 Mile Radius | 3 Mile Radius | 5 Mile Radius | 10 Minute Drive |
|--------------------------------------|---------------------------------------|---------------|---------------|---------------|-----------------|
| Population | Current Estimated Population | 29,671 | 192,837 | 414,100 | 213,015 |
| | 2010 Census Population | 23,393 | 167,518 | 376,828 | 188,019 |
| | 2000 Census Population | 17,394 | 146,981 | 349,397 | 166,911 |
| | Historical Annual Growth 2000 to 2010 | 3.0% | 1.3% | 0.8% | 1.2% |
| | Estimated Annual Growth 2010 to 2018 | 2.9% | 1.7% | 1.1% | 1.5% |
| | Projected Annual Growth 2018 to 2023 | 2.1% | 1.3% | 0.7% | 1.1% |
| Households | Current Estimated Households | 14,091 | 84,941 | 169,320 | 92,429 |
| | 2010 Census Households | 11,073 | 73,096 | 152,351 | 80,675 |
| | 2000 Census Households | 8,802 | 67,207 | 146,634 | 74,840 |
| | Historical Annual Growth 2000 to 2010 | 2.3% | 0.8% | 0.4% | 0.8% |
| | Estimated Annual Growth 2010 to 2018 | 3.0% | 1.8% | 1.3% | 1.7% |
| | Projected Annual Growth 2018 to 2023 | 2.2% | 1.4% | 0.8% | 1.2% |
| | Population per Household | 2.1 | 2.3 | 2.4 | 2.3 |
| Ethnic | Hispanic or Latino Population | 38% | 37% | 30% | 36% |
| | Non Hispanic or Latino Population | 62% | 63% | 70% | 64% |
| Race | White | 87.2% | 73.3% | 57.0% | 70.6% |
| | Black or African American | 6.3% | 19.2% | 35.2% | 21.7% |
| | Asian & Pacific Islander | 2.0% | 2.1% | 1.9% | 2.1% |
| | Other Races | 4.5% | 5.4% | 5.9% | 5.6% |