

90 - 30 Metropolitan Avenue
Rego Park, New York

1 Mile Radius

3 Mile Radius

5 Mile Radius

10 Minute Drive

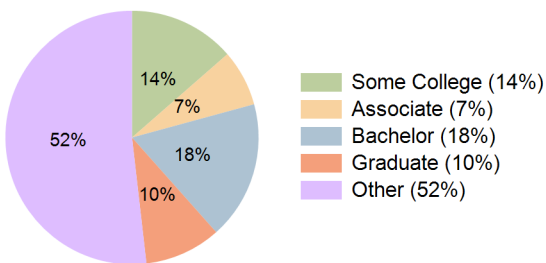
Current Year Demographics

Current Population	51,673	966,801	2,359,535	1,076,921
Total Daytime Pop	44,352	722,290	1,889,734	816,715
Workplace Pop	16,338	203,098	584,093	240,276
Average Household Income	\$100,160	\$75,721	\$72,239	\$75,301
Median Household Income	\$76,517	\$58,510	\$54,204	\$58,001
Total Households	21,399	326,109	821,582	363,455
Median Home Value	\$643,867	\$545,541	\$557,651	\$543,290
Bachelors Degree	24.7%	17.7%	17.6%	17.6%
Graduate Degree	18.7%	9.7%	9.2%	9.8%
Total Consumer Spending/Capita (Weekly)	\$471	\$436	\$431	\$436

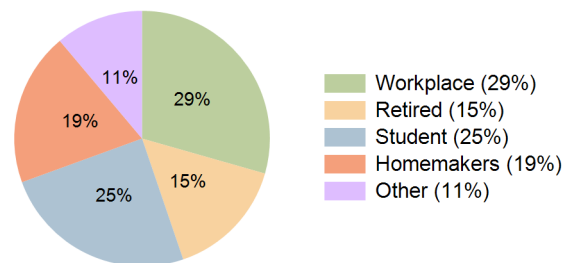
2023 Demographic Projections

Projected Population	51,824	974,985	2,396,626	1,087,737
Projected 5 Year Annual Growth Rate (Pop)	0.1%	0.2%	0.3%	0.2%
Projected Households	21,458	328,832	835,407	367,056
Projected 5 Year Annual Growth Rate (HH)	0.1%	0.2%	0.3%	0.2%

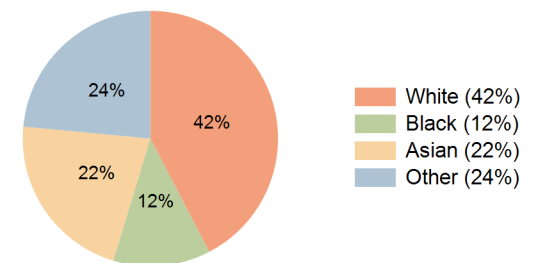
Education (10 Minute Drive)



Daytime Population (10 Minute Drive)

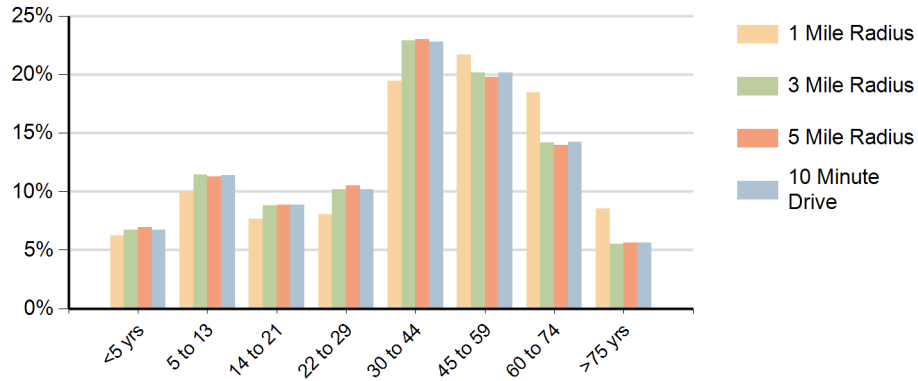


Race (10 Minute Drive)

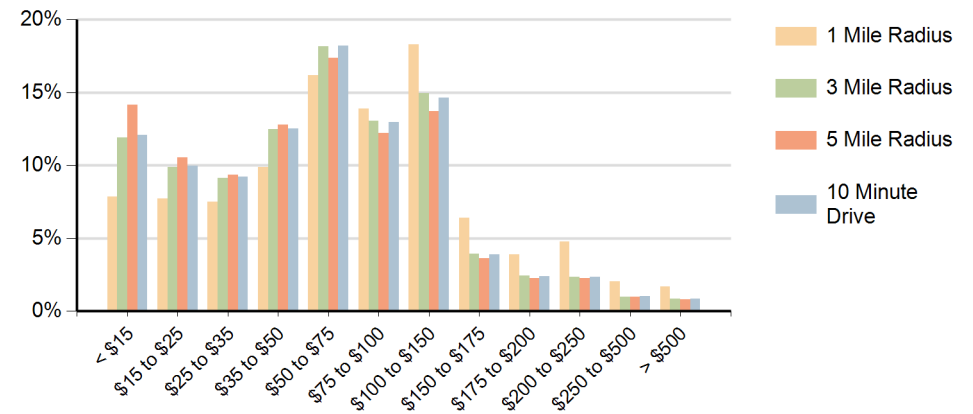


Hispanic Ethnicity
38% Hispanic | 62% Non Hispanic

Population by Age Range



Households by Income Range (\$000)



90 - 30 Metropolitan Avenue Rego Park, New York		1 Mile Radius	3 Mile Radius	5 Mile Radius	10 Minute Drive
Population	Current Estimated Population	51,673	966,801	2,359,535	1,076,921
	2010 Census Population	50,783	930,409	2,233,172	1,034,355
	2000 Census Population	51,095	916,788	2,196,447	1,015,684
	Historical Annual Growth 2000 to 2010	-0.1%	0.1%	0.2%	0.2%
	Estimated Annual Growth 2010 to 2018	0.2%	0.5%	0.7%	0.5%
	Projected Annual Growth 2018 to 2023	0.1%	0.2%	0.3%	0.2%
Households	Current Estimated Households	21,399	326,109	821,582	363,455
	2010 Census Households	21,033	314,129	776,014	349,340
	2000 Census Households	21,532	312,824	756,443	348,395
	Historical Annual Growth 2000 to 2010	-0.2%	0.0%	0.3%	0.0%
	Estimated Annual Growth 2010 to 2018	0.2%	0.5%	0.7%	0.5%
	Projected Annual Growth 2018 to 2023	0.1%	0.2%	0.3%	0.2%
	Population per Household	2.4	2.9	2.8	2.9
Ethnic	Hispanic or Latino Population	17%	39%	33%	38%
	Non Hispanic or Latino Population	83%	61%	67%	62%
Race	White	72.2%	43.7%	35.0%	42.4%
	Black or African American	2.0%	10.9%	25.3%	12.3%
	Asian & Pacific Islander	18.1%	21.3%	19.6%	21.8%
	Other Races	7.7%	24.2%	20.1%	23.5%