

Village at Lee Airpark Edgewater, Maryland	1 Mile Radius	3 Mile Radius	5 Mile Radius	10 Minute Drive
---	---------------	---------------	---------------	-----------------

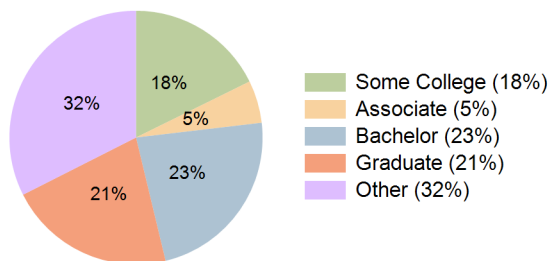
### Current Year Demographics

Current Population	6,220	35,953	100,237	44,533
Total Daytime Pop	6,322	42,604	142,133	66,416
Workplace Pop	3,025	22,454	89,456	42,930
Average Household Income	\$119,237	\$126,606	\$127,838	\$120,568
Median Household Income	\$88,770	\$98,980	\$97,969	\$94,406
Total Households	2,436	14,584	40,248	18,115
Median Home Value	\$454,997	\$493,400	\$497,535	\$468,413
Bachelors Degree	19.2%	24.2%	26.2%	23.1%
Graduate Degree	17.5%	21.5%	23.4%	21.3%
Total Consumer Spending/Capita (Weekly)	\$364	\$366	\$364	\$360

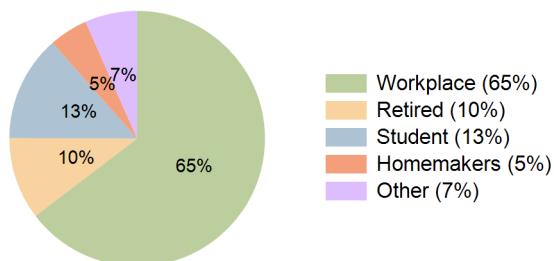
### 2024 Demographic Projections

Projected Population	6,544	38,687	107,059	48,196
Projected 5 Year Annual Growth Rate (Pop)	1.0%	1.5%	1.3%	1.6%
Projected Households	2,565	15,756	43,249	19,710
Projected 5 Year Annual Growth Rate (HH)	1.0%	1.6%	1.4%	1.7%

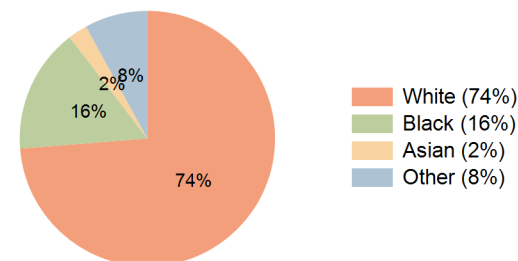
Education (10 Minute Drive)



Daytime Population (10 Minute Drive)

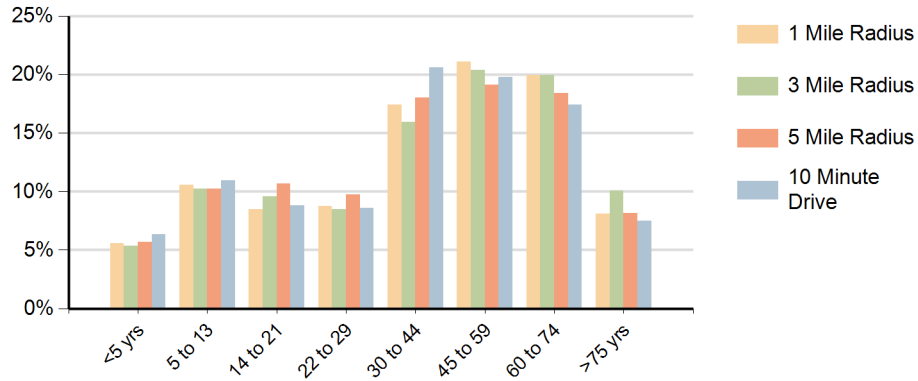


Race (10 Minute Drive)

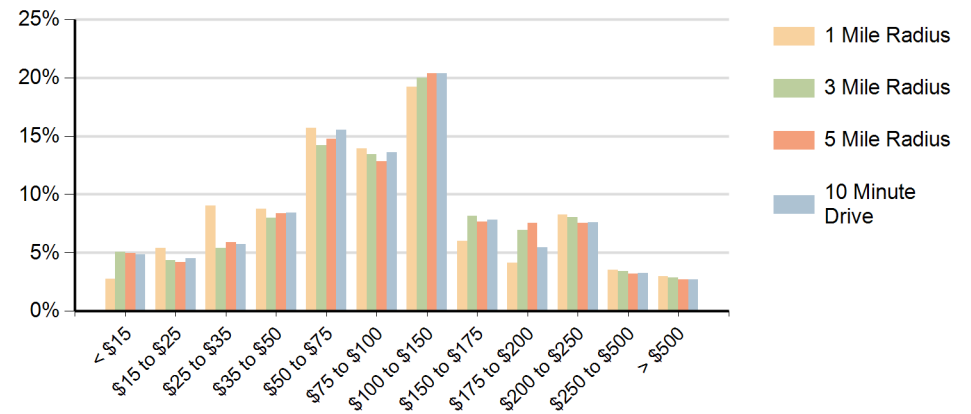


**Hispanic Ethnicity**  
11% Hispanic | 89% Non Hispanic

### Population by Age Range



### Households by Income Range (\$000)



Village at Lee Airpark Edgewater, Maryland		1 Mile Radius	3 Mile Radius	5 Mile Radius	10 Minute Drive
Population	Current Estimated Population	6,220	35,953	100,237	44,533
	2010 Census Population	5,936	33,271	94,327	40,779
	2000 Census Population	5,227	28,111	85,396	34,407
	Historical Annual Growth 2000 to 2010	1.3%	1.7%	1.0%	1.7%
	Estimated Annual Growth 2010 to 2019	0.5%	0.9%	0.7%	1.0%
	Projected Annual Growth 2019 to 2024	1.0%	1.5%	1.3%	1.6%
Households	Current Estimated Households	2,436	14,584	40,248	18,115
	2010 Census Households	2,318	13,369	37,531	16,387
	2000 Census Households	1,981	11,208	33,889	13,452
	Historical Annual Growth 2000 to 2010	1.6%	1.8%	1.0%	2.0%
	Estimated Annual Growth 2010 to 2019	0.6%	1.0%	0.8%	1.1%
	Projected Annual Growth 2019 to 2024	1.0%	1.6%	1.4%	1.7%
	Population per Household	2.5	2.4	2.4	2.4
Ethnic	Hispanic or Latino Population	9%	8%	10%	11%
	Non Hispanic or Latino Population	91%	92%	90%	89%
Race	White	89.3%	79.5%	77.3%	73.7%
	Black or African American	3.0%	12.5%	13.5%	15.8%
	Asian & Pacific Islander	1.7%	1.8%	2.2%	2.5%
	Other Races	6.0%	6.2%	7.0%	8.0%