

Keller Town Center Keller, Texas	1 Mile Radius	3 Mile Radius	5 Mile Radius	10 Minute Drive
-------------------------------------	---------------	---------------	---------------	-----------------

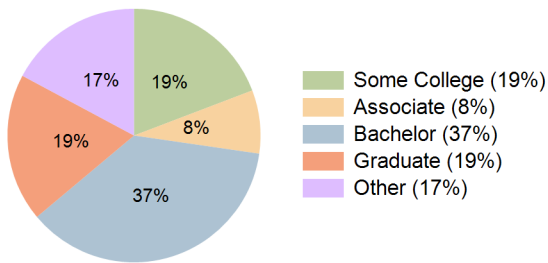
Current Year Demographics

Current Population	9,494	80,904	236,096	126,611
Total Daytime Pop	15,426	66,614	181,343	111,826
Workplace Pop	6,255	19,139	48,675	33,589
Average Household Income	\$135,630	\$173,000	\$150,952	\$168,952
Median Household Income	\$100,768	\$139,632	\$116,414	\$131,195
Total Households	3,616	27,141	79,013	41,926
Median Home Value	\$479,067	\$512,530	\$417,058	\$484,127
Bachelors Degree	34.8%	37.2%	34.3%	36.6%
Graduate Degree	16.4%	18.8%	16.0%	18.9%
Total Consumer Spending/Capita (Weekly)	\$373	\$386	\$376	\$383

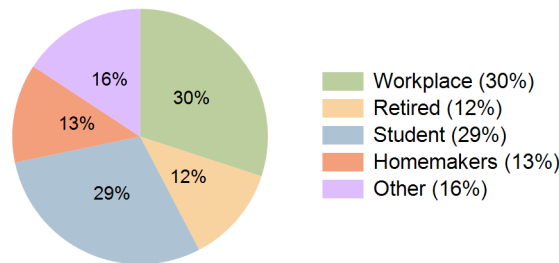
2027 Demographic Projections

Projected Population	10,027	86,554	250,986	135,325
Projected 5 Year Annual Growth Rate (Pop)	1.1%	1.4%	1.2%	1.3%
Projected Households	3,824	29,091	84,028	44,872
Projected 5 Year Annual Growth Rate (HH)	1.1%	1.4%	1.2%	1.4%

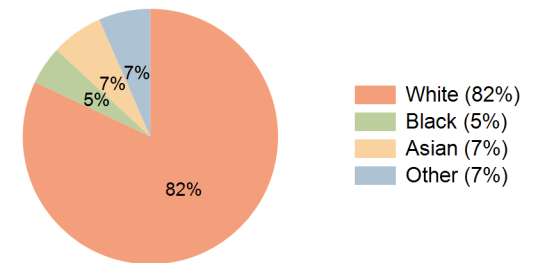
Education (10 Minute Drive)



Daytime Population (10 Minute Drive)

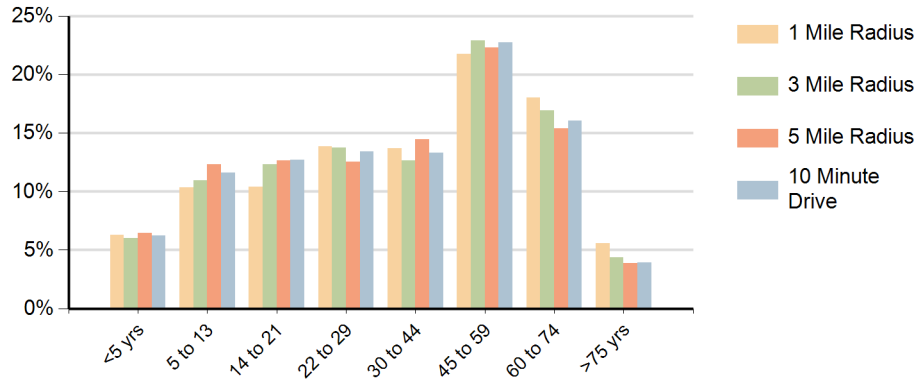


Race (10 Minute Drive)

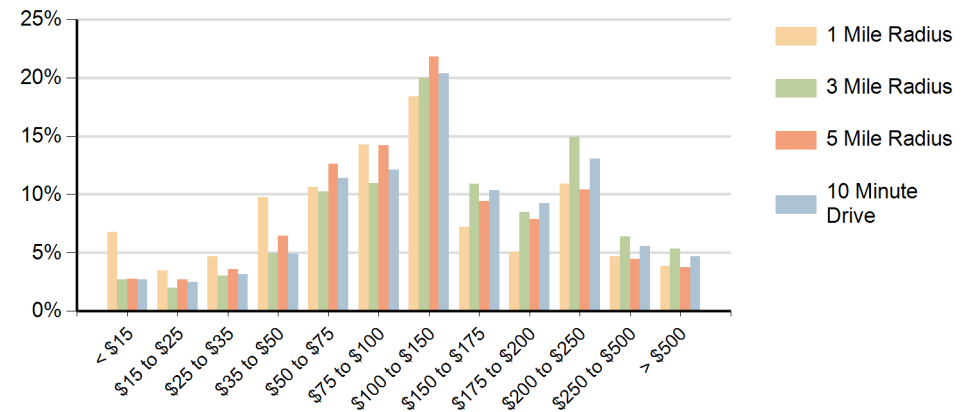


Hispanic Ethnicity
12% Hispanic | 88% Non Hispanic

Population by Age Range



Households by Income Range (\$000)



Keller Town Center Keller, Texas		1 Mile Radius	3 Mile Radius	5 Mile Radius	10 Minute Drive
Population	Current Estimated Population	9,494	80,904	236,096	126,611
	2010 Census Population	7,576	64,835	191,531	101,079
	2000 Census Population	5,292	35,170	105,049	52,933
	Historical Annual Growth 2000 to 2010	3.7%	6.3%	6.2%	6.7%
	Estimated Annual Growth 2010 to 2022	1.9%	1.8%	1.7%	1.9%
	Projected Annual Growth 2022 to 2027	1.1%	1.4%	1.2%	1.3%
Households	Current Estimated Households	3,616	27,141	79,013	41,926
	2010 Census Households	2,869	21,605	63,934	33,306
	2000 Census Households	1,757	11,274	33,881	16,671
	Historical Annual Growth 2000 to 2010	5.0%	6.7%	6.6%	7.2%
	Estimated Annual Growth 2010 to 2022	1.9%	1.9%	1.7%	1.9%
	Projected Annual Growth 2022 to 2027	1.1%	1.4%	1.2%	1.4%
Ethnic	Population per Household	2.6	3.0	3.0	3.0
	Hispanic or Latino Population	10%	11%	13%	12%
Race	Non Hispanic or Latino Population	90%	89%	87%	88%
	White	87.1%	84.2%	81.0%	82.0%
	Black or African American	2.7%	4.2%	5.3%	4.8%
	Asian & Pacific Islander	6.2%	5.5%	6.3%	6.6%
	Other Races	4.1%	6.1%	7.5%	6.5%