

Rona Plaza
Santa Ana, California

1 Mile Radius

3 Mile Radius

5 Mile Radius

10 Minute Drive

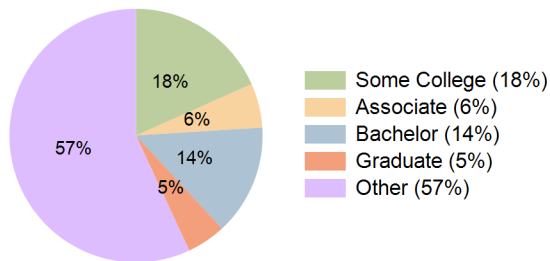
Current Year Demographics

Current Population	54,938	367,556	735,901	513,358
Total Daytime Pop	51,022	373,054	925,551	596,304
Workplace Pop	5,402	107,810	391,417	213,201
Average Household Income	\$85,318	\$89,880	\$98,234	\$91,986
Median Household Income	\$68,438	\$72,175	\$78,285	\$74,202
Total Households	9,906	81,100	196,169	126,008
Median Home Value	\$630,585	\$740,585	\$818,112	\$757,871
Bachelors Degree	6.8%	11.6%	17.0%	14.1%
Graduate Degree	2.7%	4.0%	6.6%	5.0%
Total Consumer Spending/Capita (Weekly)	\$381	\$386	\$391	\$387

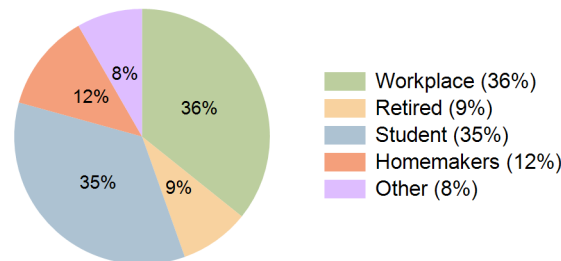
2027 Demographic Projections

Projected Population	54,736	365,927	734,249	511,642
Projected 5 Year Annual Growth Rate (Pop)	-0.1%	-0.1%	0.0%	-0.1%
Projected Households	9,872	80,757	195,983	125,679
Projected 5 Year Annual Growth Rate (HH)	-0.1%	-0.1%	0.0%	-0.1%

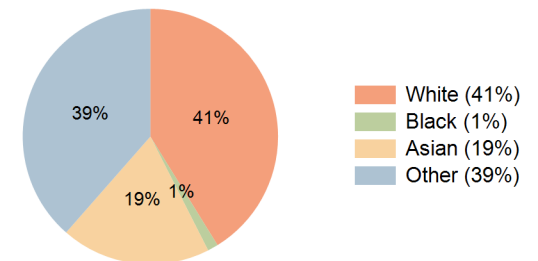
Education (10 Minute Drive)



Daytime Population (10 Minute Drive)

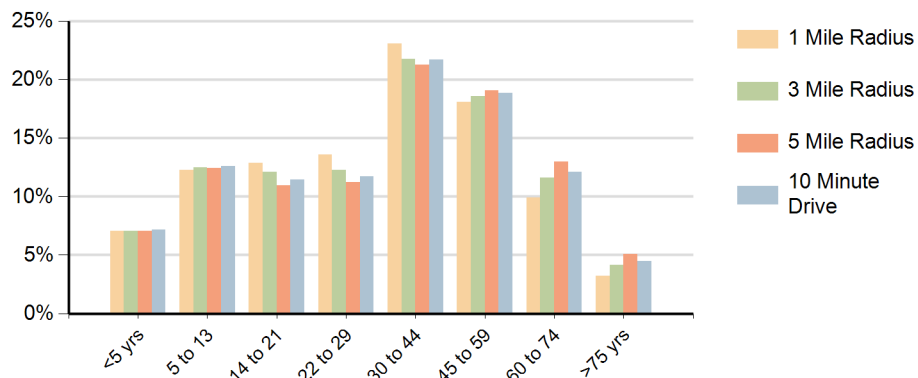


Race (10 Minute Drive)

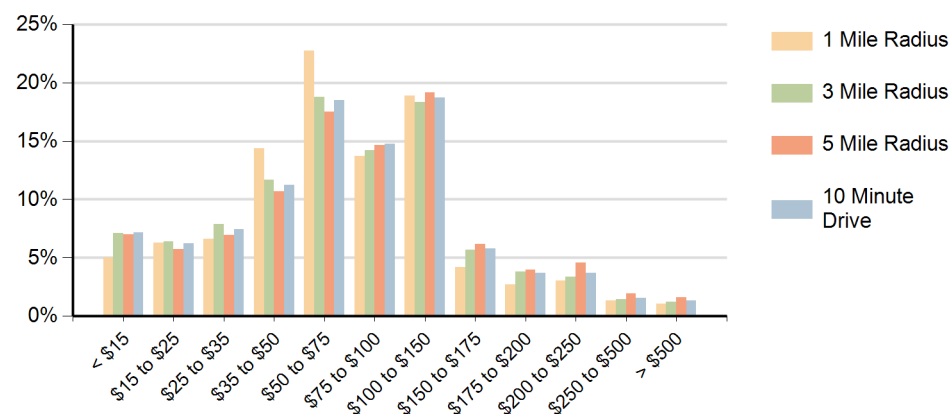


Hispanic Ethnicity
65% Hispanic | 35% Non Hispanic

Population by Age Range



Households by Income Range (\$000)



Rona Plaza Santa Ana, California		1 Mile Radius	3 Mile Radius	5 Mile Radius	10 Minute Drive
Population	Current Estimated Population	54,938	367,556	735,901	513,358
	2010 Census Population	53,048	355,808	711,096	497,083
	2000 Census Population	57,445	369,926	707,511	505,646
	Historical Annual Growth 2000 to 2010	-0.8%	-0.4%	0.1%	-0.2%
	Estimated Annual Growth 2010 to 2022	0.3%	0.3%	0.3%	0.3%
	Projected Annual Growth 2022 to 2027	-0.1%	-0.1%	0.0%	-0.1%
Households	Current Estimated Households	9,906	81,100	196,169	126,008
	2010 Census Households	9,524	78,381	188,715	121,701
	2000 Census Households	9,843	78,240	183,726	119,498
	Historical Annual Growth 2000 to 2010	-0.3%	0.0%	0.3%	0.2%
	Estimated Annual Growth 2010 to 2022	0.3%	0.3%	0.3%	0.3%
	Projected Annual Growth 2022 to 2027	-0.1%	-0.1%	0.0%	-0.1%
	Population per Household	5.3	4.4	3.7	4.0
Ethnic	Hispanic or Latino Population	88%	73%	56%	65%
	Non Hispanic or Latino Population	12%	27%	44%	35%
Race	White	37.0%	39.2%	43.8%	41.2%
	Black or African American	1.6%	1.1%	1.4%	1.3%
	Asian & Pacific Islander	6.4%	16.1%	22.2%	18.9%
	Other Races	55.1%	43.6%	32.7%	38.5%