

**Oakbrook Plaza**  
Thousand Oaks, California

**1 Mile Radius**

**3 Mile Radius**

**5 Mile Radius**

**10 Minute Drive**

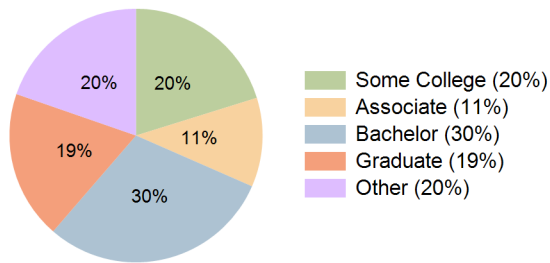
### Current Year Demographics

Current Population	12,415	71,813	155,435	150,247
Total Daytime Pop	8,932	78,161	162,186	174,824
Workplace Pop	1,431	29,677	66,847	69,306
Average Household Income	\$143,690	\$141,022	\$155,441	\$147,969
Median Household Income	\$109,173	\$107,362	\$119,131	\$112,840
Total Households	4,248	25,716	56,222	53,723
Median Home Value	\$1,089,415	\$1,204,046	\$1,254,851	\$1,150,897
Bachelors Degree	27.9%	28.8%	31.2%	29.8%
Graduate Degree	20.9%	19.0%	20.5%	18.9%
Total Consumer Spending/Capita (Weekly)	\$418	\$416	\$422	\$416

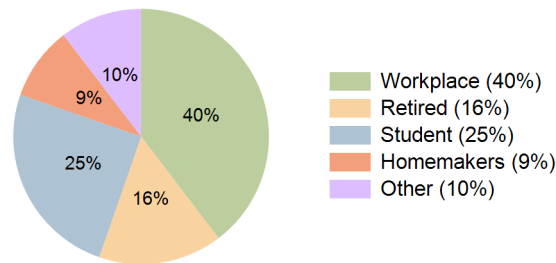
### 2027 Demographic Projections

Projected Population	12,478	72,238	157,293	152,263
Projected 5 Year Annual Growth Rate (Pop)	0.1%	0.1%	0.2%	0.3%
Projected Households	4,270	25,864	56,821	54,366
Projected 5 Year Annual Growth Rate (HH)	0.1%	0.1%	0.2%	0.2%

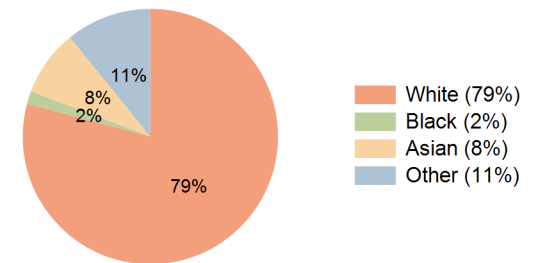
**Education (10 Minute Drive)**



**Daytime Population (10 Minute Drive)**

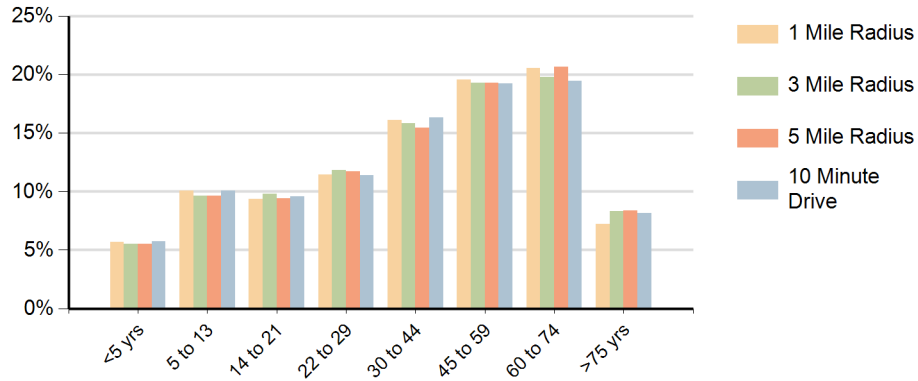


**Race (10 Minute Drive)**

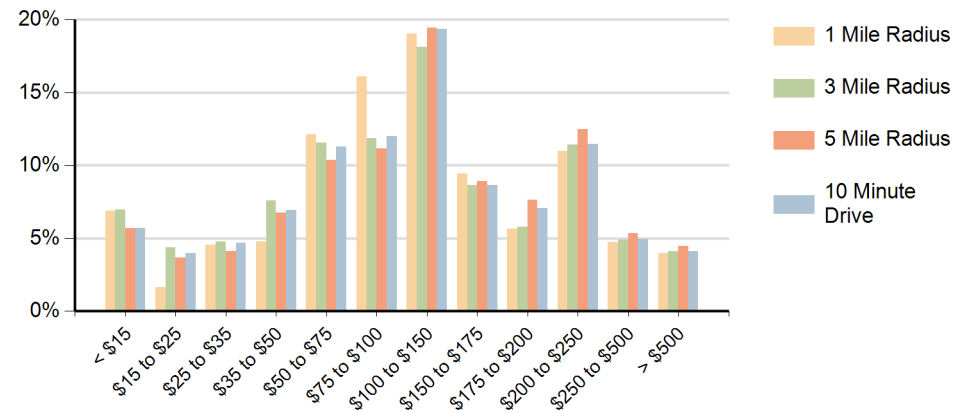


**Hispanic Ethnicity**  
21% Hispanic | 79% Non Hispanic

### Population by Age Range



### Households by Income Range (\$000)



Oakbrook Plaza Thousand Oaks, California		1 Mile Radius	3 Mile Radius	5 Mile Radius	10 Minute Drive
Population	Current Estimated Population	12,415	71,813	155,435	150,247
	2010 Census Population	12,370	72,132	154,331	148,028
	2000 Census Population	11,883	69,289	147,688	140,270
	Historical Annual Growth 2000 to 2010	0.4%	0.4%	0.4%	0.5%
	Estimated Annual Growth 2010 to 2022	0.0%	0.0%	0.1%	0.1%
	Projected Annual Growth 2022 to 2027	0.1%	0.1%	0.2%	0.3%
Households	Current Estimated Households	4,248	25,716	56,222	53,723
	2010 Census Households	4,234	25,849	56,034	53,170
	2000 Census Households	3,992	24,321	52,236	49,318
	Historical Annual Growth 2000 to 2010	0.6%	0.6%	0.7%	0.8%
	Estimated Annual Growth 2010 to 2022	0.0%	0.0%	0.0%	0.1%
	Projected Annual Growth 2022 to 2027	0.1%	0.1%	0.2%	0.2%
Population per Household		2.9	2.7	2.7	2.8
Ethnic	Hispanic or Latino Population	20%	19%	17%	21%
	Non Hispanic or Latino Population	80%	81%	83%	79%
Race	White	80.3%	80.7%	80.1%	79.1%
	Black or African American	1.4%	1.5%	1.5%	1.6%
	Asian & Pacific Islander	7.2%	8.3%	9.1%	8.4%
	Other Races	11.1%	9.6%	9.2%	10.8%