

Woodman Van Nuys Arleta, California	1 Mile Radius	3 Mile Radius	5 Mile Radius	10 Minute Drive
--	---------------	---------------	---------------	-----------------

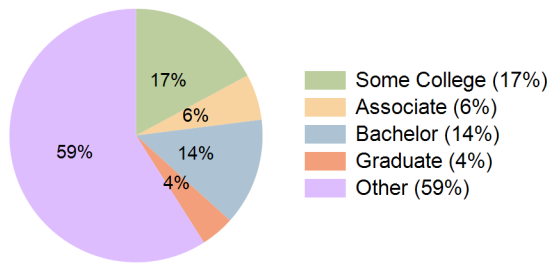
Current Year Demographics

Current Population	40,436	302,102	688,864	483,172
Total Daytime Pop	24,136	242,997	665,054	420,388
Workplace Pop	3,721	80,433	219,546	149,916
Average Household Income	\$65,926	\$66,374	\$69,370	\$67,766
Median Household Income	\$54,693	\$51,942	\$52,368	\$52,007
Total Households	9,750	76,410	191,672	129,030
Median Home Value	\$540,564	\$585,293	\$630,029	\$606,802
Bachelors Degree	12.3%	12.5%	14.7%	13.7%
Graduate Degree	2.8%	3.4%	5.2%	4.3%
Total Consumer Spending/Capita (Weekly)	\$333	\$330	\$334	\$332

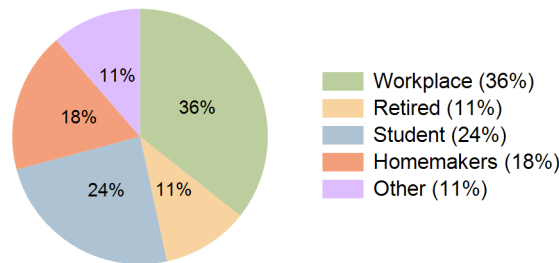
2023 Demographic Projections

Projected Population	40,988	310,778	712,299	498,962
Projected 5 Year Annual Growth Rate (Pop)	0.3%	0.6%	0.7%	0.6%
Projected Households	9,878	78,690	198,487	133,478
Projected 5 Year Annual Growth Rate (HH)	0.3%	0.6%	0.7%	0.7%

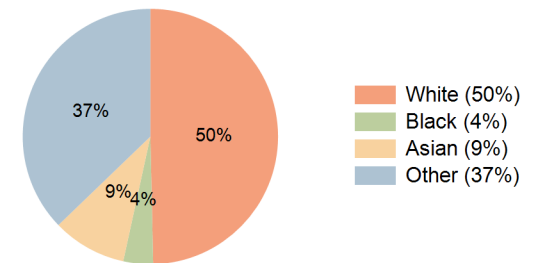
Education (10 Minute Drive)



Daytime Population (10 Minute Drive)

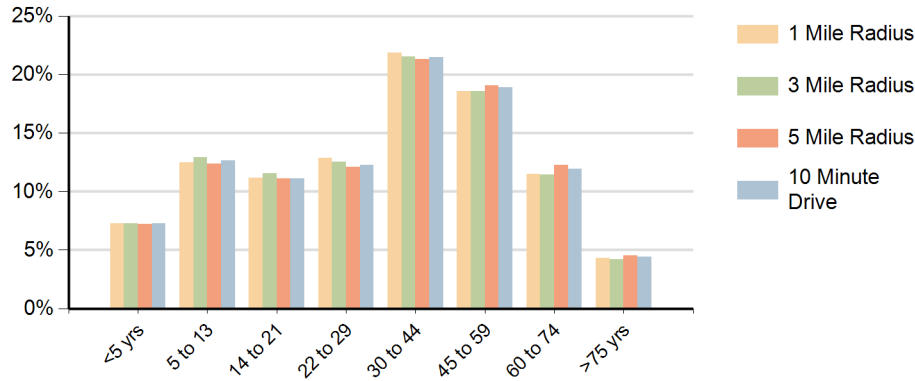


Race (10 Minute Drive)

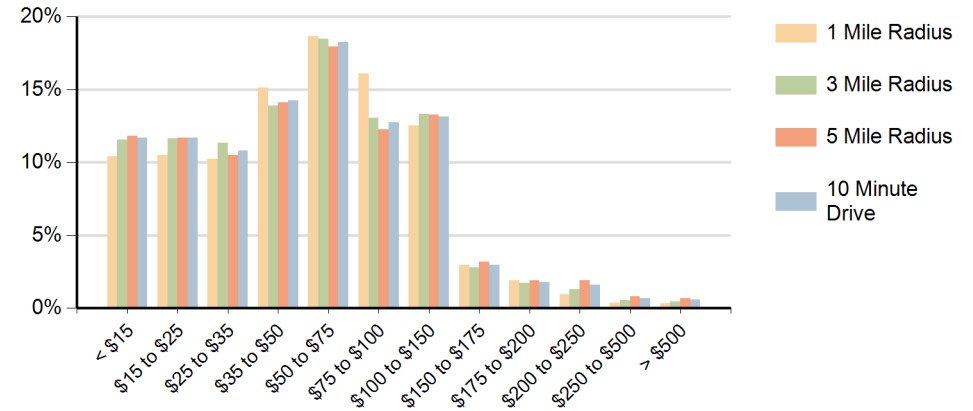


Hispanic Ethnicity
70% Hispanic | 30% Non Hispanic

Population by Age Range



Households by Income Range (\$000)



Woodman Van Nuys Arleta, California		1 Mile Radius	3 Mile Radius	5 Mile Radius	10 Minute Drive
Population	Current Estimated Population	40,436	302,102	688,864	483,172
	2010 Census Population	40,622	297,222	672,281	470,974
	2000 Census Population	36,934	281,613	642,238	448,615
	Historical Annual Growth 2000 to 2010	1.0%	0.5%	0.5%	0.5%
	Estimated Annual Growth 2010 to 2018	-0.1%	0.2%	0.3%	0.3%
	Projected Annual Growth 2018 to 2023	0.3%	0.6%	0.7%	0.6%
Households	Current Estimated Households	9,750	76,410	191,672	129,030
	2010 Census Households	9,805	75,016	186,582	125,248
	2000 Census Households	9,005	72,233	180,461	120,730
	Historical Annual Growth 2000 to 2010	0.9%	0.4%	0.3%	0.4%
	Estimated Annual Growth 2010 to 2018	-0.1%	0.2%	0.3%	0.4%
	Projected Annual Growth 2018 to 2023	0.3%	0.6%	0.7%	0.7%
	Population per Household	4.1	3.9	3.5	3.7
Ethnic	Hispanic or Latino Population	77%	75%	66%	70%
	Non Hispanic or Latino Population	23%	25%	34%	30%
Race	White	46.8%	47.6%	51.9%	49.7%
	Black or African American	2.8%	3.2%	4.0%	3.8%
	Asian & Pacific Islander	11.7%	9.7%	8.9%	9.4%
	Other Races	38.7%	39.5%	35.2%	37.2%