

Hasley Canyon Village
Castaic, California

1 Mile Radius

3 Mile Radius

5 Mile Radius

10 Minute Drive

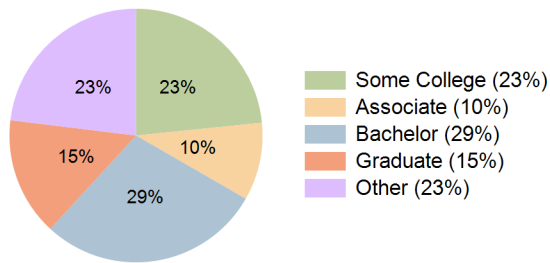
Current Year Demographics

Current Population	7,693	31,571	86,004	126,256
Total Daytime Pop	7,432	54,354	140,698	183,656
Workplace Pop	2,706	26,903	56,904	69,610
Average Household Income	\$147,139	\$154,112	\$149,313	\$141,759
Median Household Income	\$132,469	\$129,560	\$125,343	\$118,678
Total Households	1,868	7,393	26,619	41,137
Median Home Value	\$769,753	\$804,134	\$841,828	\$846,726
Bachelors Degree	22.7%	23.0%	29.4%	28.5%
Graduate Degree	10.7%	11.7%	15.7%	15.1%
Total Consumer Spending/Capita (Weekly)	\$428	\$427	\$427	\$424

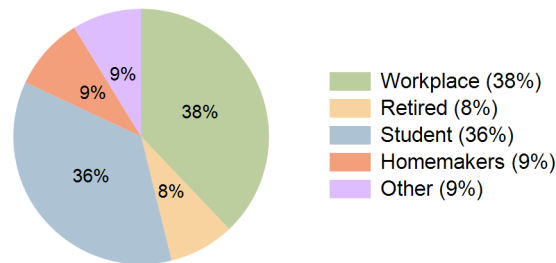
2027 Demographic Projections

Projected Population	7,720	32,117	88,362	129,831
Projected 5 Year Annual Growth Rate (Pop)	0.1%	0.3%	0.5%	0.6%
Projected Households	1,876	7,554	27,403	42,343
Projected 5 Year Annual Growth Rate (HH)	0.1%	0.4%	0.6%	0.6%

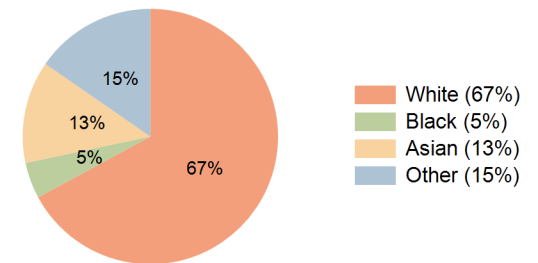
Education (10 Minute Drive)



Daytime Population (10 Minute Drive)

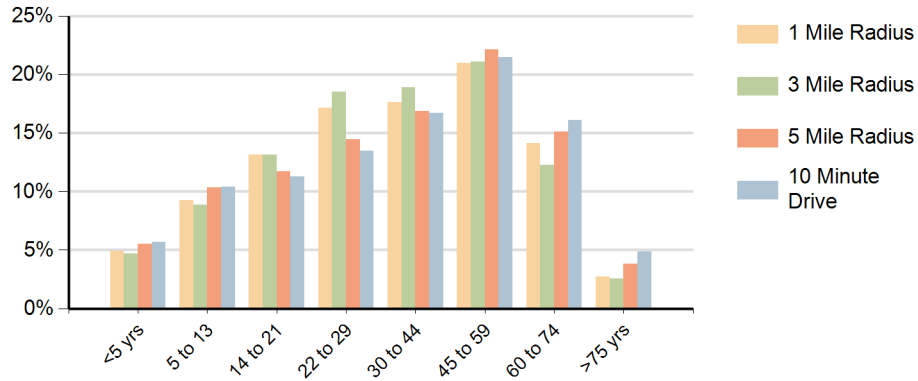


Race (10 Minute Drive)

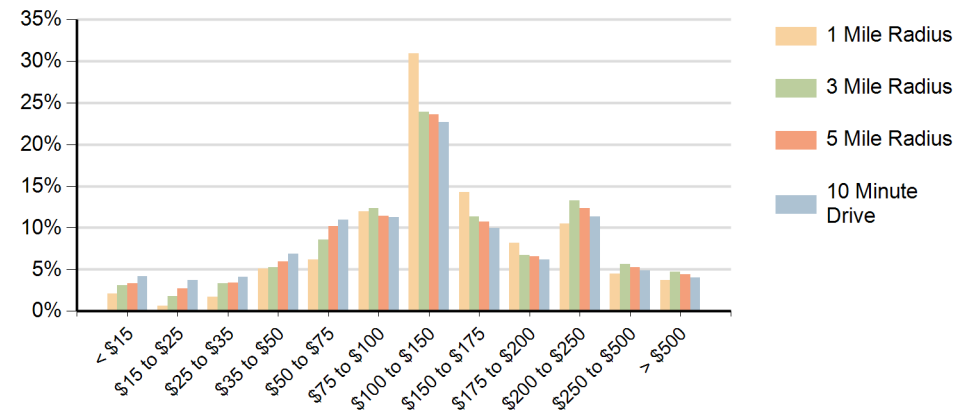


Hispanic Ethnicity
24% Hispanic | 76% Non Hispanic

Population by Age Range



Households by Income Range (\$000)



Hasley Canyon Village Castaic, California		1 Mile Radius	3 Mile Radius	5 Mile Radius	10 Minute Drive
Population	Current Estimated Population	7,693	31,571	86,004	126,256
	2010 Census Population	7,826	30,766	84,152	123,832
	2000 Census Population	6,095	19,369	53,536	87,362
	Historical Annual Growth 2000 to 2010	2.5%	4.7%	4.6%	3.6%
	Estimated Annual Growth 2010 to 2022	-0.1%	0.2%	0.2%	0.2%
	Projected Annual Growth 2022 to 2027	0.1%	0.3%	0.5%	0.6%
Households	Current Estimated Households	1,868	7,393	26,619	41,137
	2010 Census Households	1,904	7,153	26,115	40,461
	2000 Census Households	1,053	3,770	15,803	27,860
	Historical Annual Growth 2000 to 2010	6.1%	6.6%	5.2%	3.8%
	Estimated Annual Growth 2010 to 2022	-0.2%	0.3%	0.2%	0.1%
	Projected Annual Growth 2022 to 2027	0.1%	0.4%	0.6%	0.6%
Population per Household		3.4	3.3	3.0	2.9
Ethnic	Hispanic or Latino Population	33%	34%	24%	24%
	Non Hispanic or Latino Population	67%	66%	76%	76%
Race	White	61.7%	56.6%	64.7%	67.1%
	Black or African American	7.0%	8.8%	5.5%	4.6%
	Asian & Pacific Islander	11.2%	11.6%	13.9%	12.9%
	Other Races	20.1%	23.0%	16.0%	15.4%