

Blossom Valley
Mountain View, California

1 Mile Radius

3 Mile Radius

5 Mile Radius

10 Minute Drive

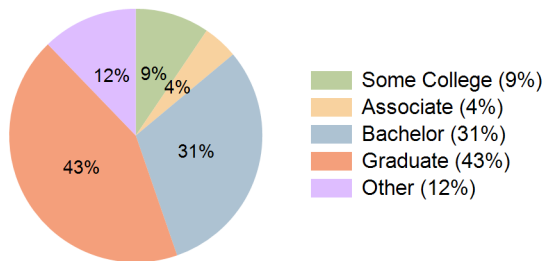
Current Year Demographics

Current Population	18,835	156,385	327,680	207,407
Total Daytime Pop	18,639	171,961	440,708	268,403
Workplace Pop	7,597	79,620	198,626	132,319
Average Household Income	\$303,373	\$246,899	\$231,380	\$236,034
Median Household Income	\$197,265	\$172,378	\$168,660	\$168,448
Total Households	7,192	63,657	127,995	82,981
Median Home Value	\$1,009,935	\$1,129,633	\$1,131,917	\$1,078,680
Bachelors Degree	30.4%	30.4%	30.5%	30.7%
Graduate Degree	47.1%	45.0%	43.4%	43.1%
Total Consumer Spending/Capita (Weekly)	\$502	\$489	\$484	\$485

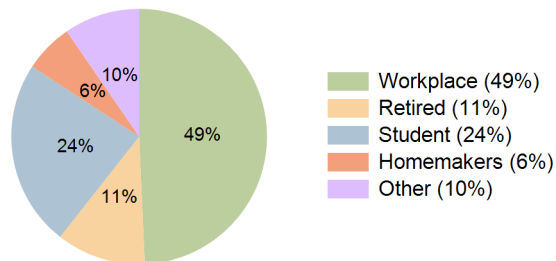
2027 Demographic Projections

Projected Population	19,335	159,316	332,744	211,387
Projected 5 Year Annual Growth Rate (Pop)	0.5%	0.4%	0.3%	0.4%
Projected Households	7,398	64,954	130,100	84,685
Projected 5 Year Annual Growth Rate (HH)	0.6%	0.4%	0.3%	0.4%

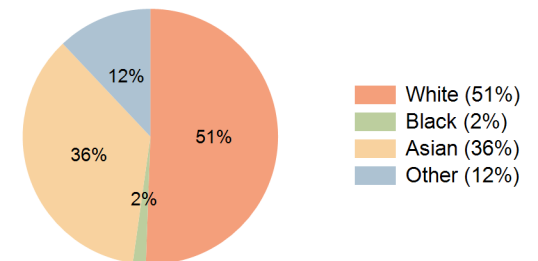
Education (10 Minute Drive)



Daytime Population (10 Minute Drive)

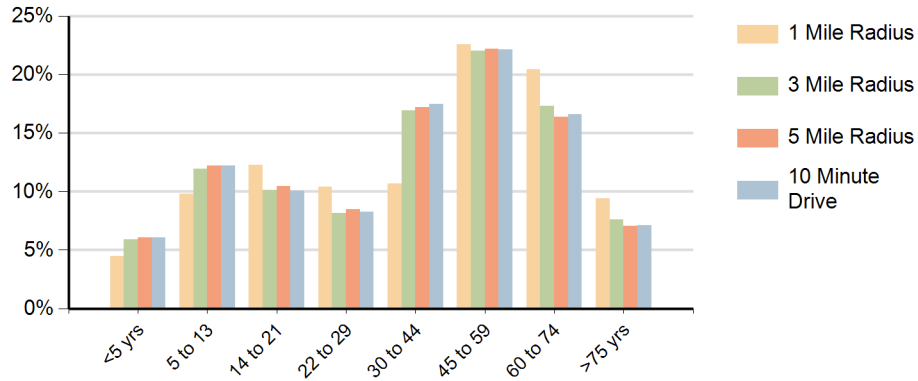


Race (10 Minute Drive)

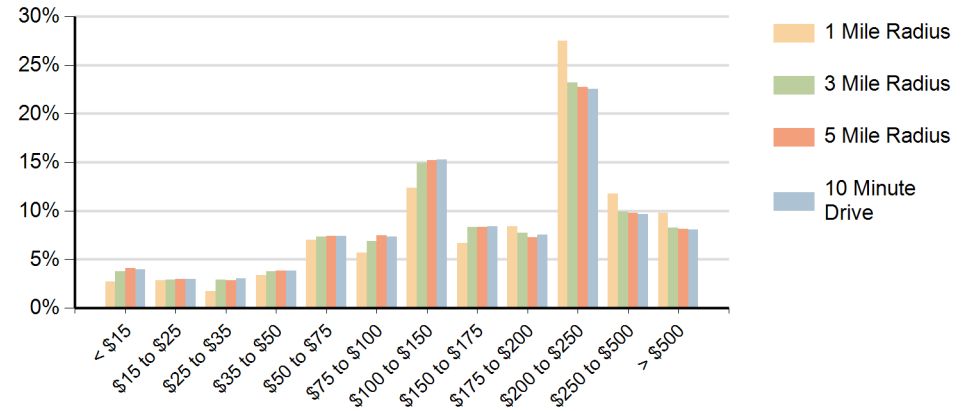


Hispanic Ethnicity
15% Hispanic | 85% Non Hispanic

Population by Age Range



Households by Income Range (\$000)



Blossom Valley Mountain View, California		1 Mile Radius	3 Mile Radius	5 Mile Radius	10 Minute Drive
Population	Current Estimated Population	18,835	156,385	327,680	207,407
	2010 Census Population	17,248	150,039	314,582	197,409
	2000 Census Population	16,556	143,312	295,411	186,005
	Historical Annual Growth 2000 to 2010	0.4%	0.5%	0.6%	0.6%
	Estimated Annual Growth 2010 to 2022	0.7%	0.3%	0.3%	0.4%
	Projected Annual Growth 2022 to 2027	0.5%	0.4%	0.3%	0.4%
Households	Current Estimated Households	7,192	63,657	127,995	82,981
	2010 Census Households	6,540	60,775	122,546	78,681
	2000 Census Households	6,480	59,684	119,500	76,429
	Historical Annual Growth 2000 to 2010	0.1%	0.2%	0.3%	0.3%
	Estimated Annual Growth 2010 to 2022	0.8%	0.4%	0.4%	0.4%
	Projected Annual Growth 2022 to 2027	0.6%	0.4%	0.3%	0.4%
	Population per Household	2.6	2.4	2.5	2.5
Ethnic	Hispanic or Latino Population	7%	14%	14%	15%
	Non Hispanic or Latino Population	93%	86%	86%	85%
Race	White	65.2%	54.6%	46.9%	50.6%
	Black or African American	0.9%	1.6%	1.5%	1.6%
	Asian & Pacific Islander	25.8%	32.2%	39.8%	35.8%
	Other Races	8.2%	11.6%	11.8%	12.0%