

Littleton Square Littleton, Colorado	1 Mile Radius	3 Mile Radius	5 Mile Radius	10 Minute Drive
---	---------------	---------------	---------------	-----------------

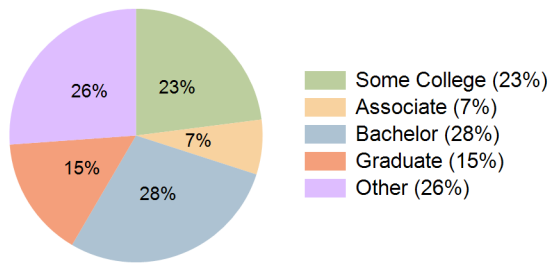
Current Year Demographics

Current Population	16,534	95,508	283,410	97,296
Total Daytime Pop	15,467	121,107	361,648	125,391
Workplace Pop	6,870	58,194	170,367	62,148
Average Household Income	\$74,488	\$98,270	\$106,413	\$95,235
Median Household Income	\$50,813	\$66,394	\$74,375	\$64,461
Total Households	7,187	41,198	120,321	42,661
Median Home Value	\$455,622	\$472,283	\$534,709	\$469,606
Bachelors Degree	22.9%	28.4%	31.3%	28.5%
Graduate Degree	12.3%	15.6%	18.9%	15.4%
Total Consumer Spending/Capita (Weekly)	\$323	\$342	\$347	\$340

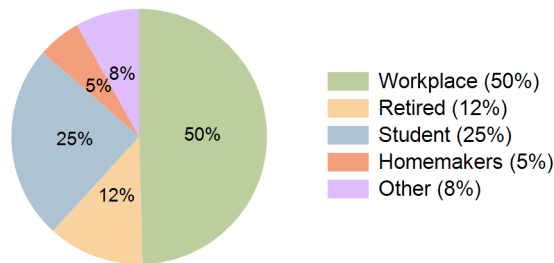
2023 Demographic Projections

Projected Population	17,123	99,250	296,443	101,317
Projected 5 Year Annual Growth Rate (Pop)	0.7%	0.8%	0.9%	0.8%
Projected Households	7,437	42,867	126,648	44,502
Projected 5 Year Annual Growth Rate (HH)	0.7%	0.8%	1.0%	0.8%

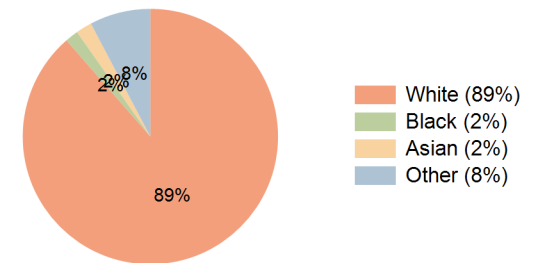
Education (10 Minute Drive)



Daytime Population (10 Minute Drive)

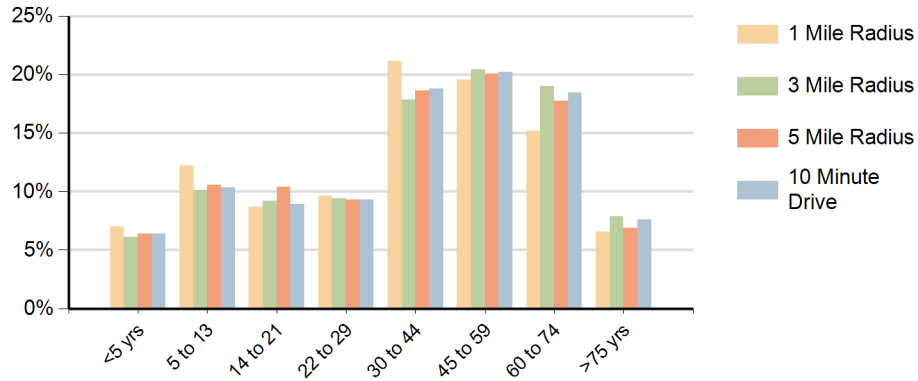


Race (10 Minute Drive)

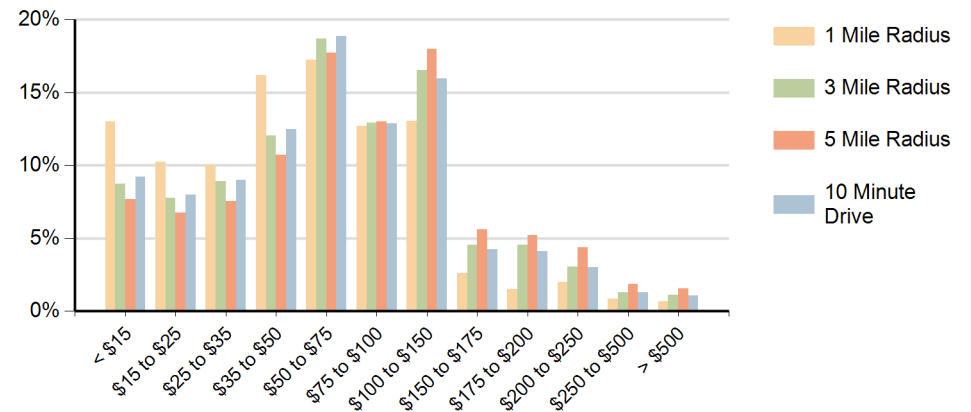


Hispanic Ethnicity
13% Hispanic | 87% Non Hispanic

Population by Age Range



Households by Income Range (\$000)



Littleton Square Littleton, Colorado		1 Mile Radius	3 Mile Radius	5 Mile Radius	10 Minute Drive
Population	Current Estimated Population	16,534	95,508	283,410	97,296
	2010 Census Population	15,496	88,734	257,021	90,272
	2000 Census Population	15,586	92,463	253,985	93,610
	Historical Annual Growth 2000 to 2010	-0.1%	-0.4%	0.1%	-0.4%
	Estimated Annual Growth 2010 to 2018	0.8%	0.9%	1.2%	0.9%
	Projected Annual Growth 2018 to 2023	0.7%	0.8%	0.9%	0.8%
Households	Current Estimated Households	7,187	41,198	120,321	42,661
	2010 Census Households	6,760	38,161	107,554	39,424
	2000 Census Households	6,918	38,146	103,005	39,140
	Historical Annual Growth 2000 to 2010	-0.2%	0.0%	0.4%	0.1%
	Estimated Annual Growth 2010 to 2018	0.7%	0.9%	1.4%	1.0%
	Projected Annual Growth 2018 to 2023	0.7%	0.8%	1.0%	0.8%
	Population per Household	2.3	2.3	2.3	2.3
Ethnic	Hispanic or Latino Population	22%	13%	15%	13%
	Non Hispanic or Latino Population	78%	87%	85%	87%
Race	White	84.2%	89.0%	86.9%	88.6%
	Black or African American	2.2%	1.6%	1.8%	1.7%
	Asian & Pacific Islander	1.9%	2.0%	3.4%	2.0%
	Other Races	11.7%	7.5%	7.9%	7.7%