

Buckley Square
Aurora, Colorado

1 Mile Radius

3 Mile Radius

5 Mile Radius

10 Minute Drive

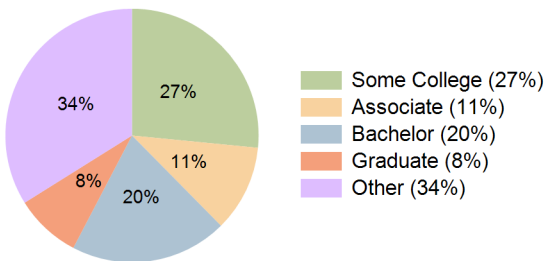
Current Year Demographics

Current Population	21,063	157,567	332,111	136,690
Total Daytime Pop	15,724	103,998	274,795	102,832
Workplace Pop	3,407	30,046	100,955	34,582
Average Household Income	\$74,579	\$69,996	\$74,972	\$68,679
Median Household Income	\$64,257	\$59,675	\$60,336	\$58,531
Total Households	7,634	61,342	126,883	53,728
Median Home Value	\$327,908	\$321,629	\$349,901	\$315,485
Bachelors Degree	18.3%	20.1%	21.6%	20.1%
Graduate Degree	6.8%	8.3%	10.3%	8.4%
Total Consumer Spending/Capita (Weekly)	\$329	\$325	\$328	\$323

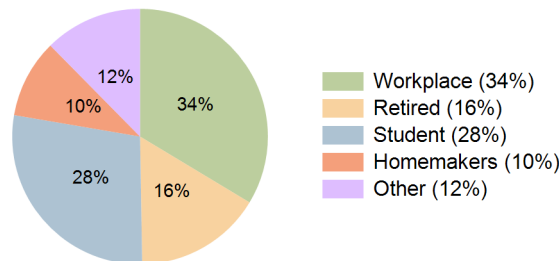
2023 Demographic Projections

Projected Population	21,940	163,706	349,633	141,741
Projected 5 Year Annual Growth Rate (Pop)	0.8%	0.8%	1.0%	0.7%
Projected Households	7,942	63,799	133,488	55,773
Projected 5 Year Annual Growth Rate (HH)	0.8%	0.8%	1.0%	0.8%

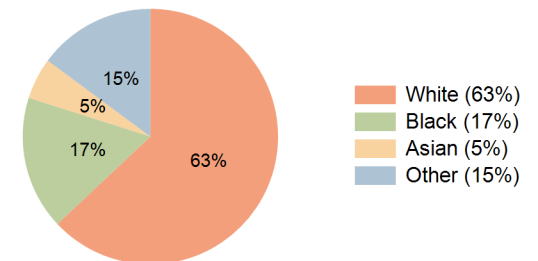
Education (10 Minute Drive)



Daytime Population (10 Minute Drive)

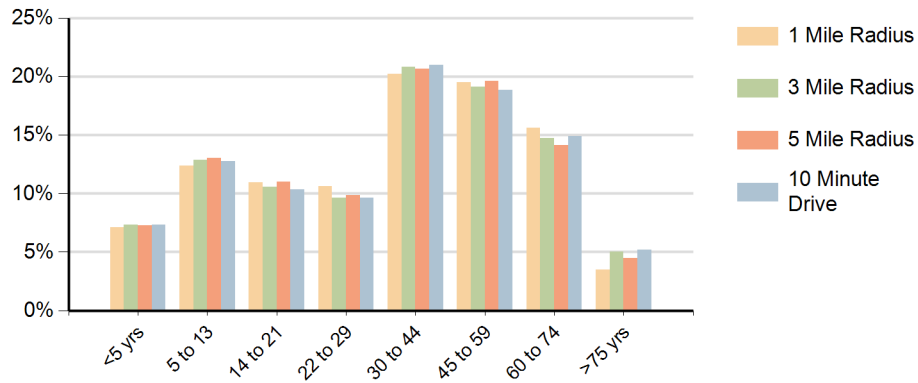


Race (10 Minute Drive)

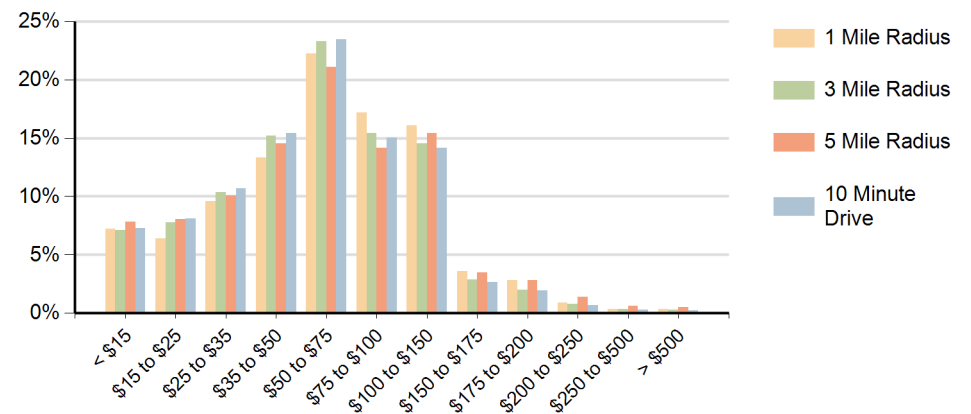


Hispanic Ethnicity
22% Hispanic | 78% Non Hispanic

Population by Age Range



Households by Income Range (\$000)



Buckley Square Aurora, Colorado		1 Mile Radius	3 Mile Radius	5 Mile Radius	10 Minute Drive
Population	Current Estimated Population	21,063	157,567	332,111	136,690
	2010 Census Population	19,629	148,033	303,648	129,056
	2000 Census Population	19,940	131,949	262,901	117,456
	Historical Annual Growth 2000 to 2010	-0.2%	1.2%	1.5%	0.9%
	Estimated Annual Growth 2010 to 2018	0.9%	0.8%	1.1%	0.7%
	Projected Annual Growth 2018 to 2023	0.8%	0.8%	1.0%	0.7%
Households	Current Estimated Households	7,634	61,342	126,883	53,728
	2010 Census Households	7,158	57,585	115,878	50,674
	2000 Census Households	7,117	51,922	103,442	46,595
	Historical Annual Growth 2000 to 2010	0.1%	1.0%	1.1%	0.8%
	Estimated Annual Growth 2010 to 2018	0.8%	0.8%	1.1%	0.7%
	Projected Annual Growth 2018 to 2023	0.8%	0.8%	1.0%	0.8%
	Population per Household	2.8	2.6	2.6	2.5
Ethnic	Hispanic or Latino Population	23%	21%	23%	22%
	Non Hispanic or Latino Population	77%	79%	77%	78%
Race	White	63.5%	63.8%	63.5%	63.0%
	Black or African American	15.4%	16.4%	15.7%	16.9%
	Asian & Pacific Islander	5.3%	5.2%	5.8%	5.2%
	Other Races	15.9%	14.6%	15.0%	14.9%