

North Hills Austin, Texas	1 Mile Radius	3 Mile Radius	5 Mile Radius	10 Minute Drive
------------------------------	---------------	---------------	---------------	-----------------

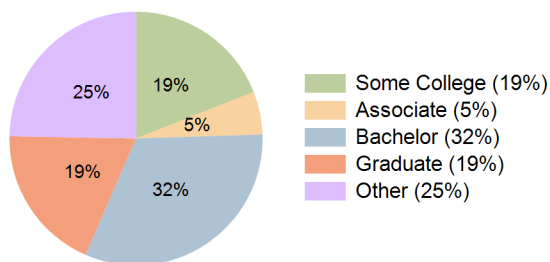
Current Year Demographics

Current Population	11,051	99,396	275,937	162,203
Total Daytime Pop	19,049	149,472	339,679	231,525
Workplace Pop	15,297	106,580	206,389	155,082
Average Household Income	\$91,368	\$91,490	\$90,279	\$86,427
Median Household Income	\$67,715	\$67,376	\$65,266	\$63,727
Total Households	6,263	48,324	122,665	75,489
Median Home Value	\$498,816	\$397,721	\$366,657	\$365,811
Bachelors Degree	39.3%	35.7%	31.1%	32.1%
Graduate Degree	24.4%	21.4%	18.1%	18.8%
Total Consumer Spending/Capita (Weekly)	\$315	\$316	\$313	\$310

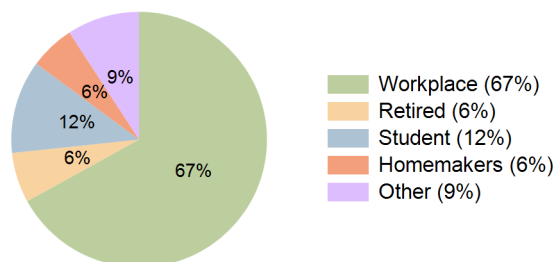
2023 Demographic Projections

Projected Population	10,749	99,737	281,516	164,201
Projected 5 Year Annual Growth Rate (Pop)	-0.6%	0.1%	0.4%	0.2%
Projected Households	6,081	48,581	125,131	76,356
Projected 5 Year Annual Growth Rate (HH)	-0.6%	0.1%	0.4%	0.2%

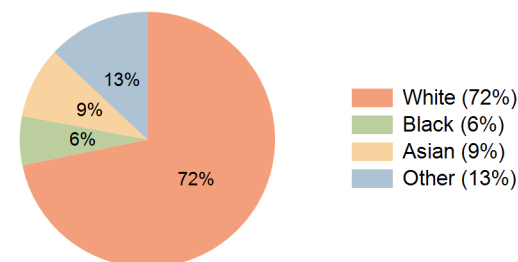
Education (10 Minute Drive)



Daytime Population (10 Minute Drive)

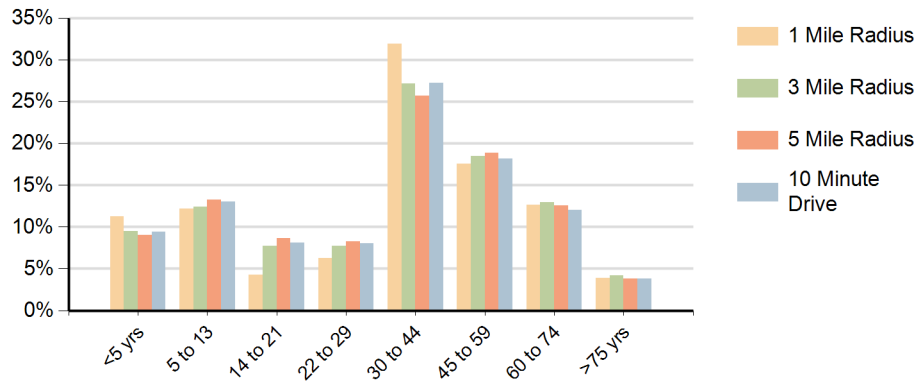


Race (10 Minute Drive)

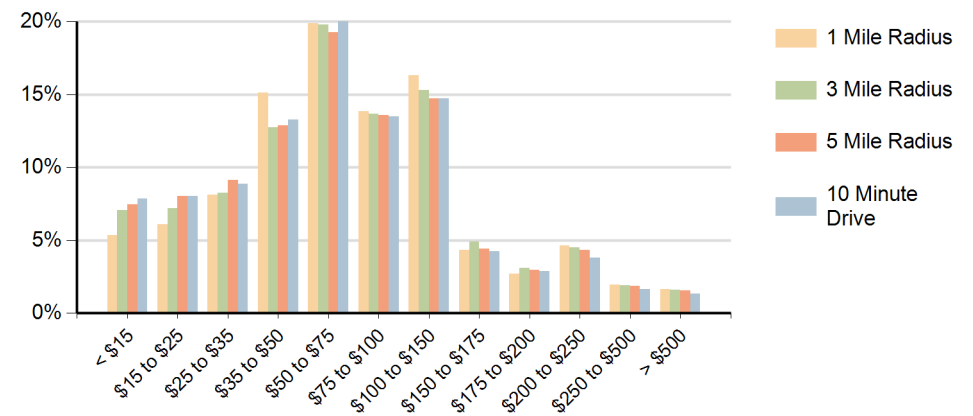


Hispanic Ethnicity
27% Hispanic | 73% Non Hispanic

Population by Age Range



Households by Income Range (\$000)



North Hills Austin, Texas		1 Mile Radius	3 Mile Radius	5 Mile Radius	10 Minute Drive
Population	Current Estimated Population	11,051	99,396	275,937	162,203
	2010 Census Population	10,245	91,275	246,008	146,346
	2000 Census Population	10,000	89,069	232,816	141,987
	Historical Annual Growth 2000 to 2010	0.2%	0.2%	0.6%	0.3%
	Estimated Annual Growth 2010 to 2018	0.9%	1.0%	1.4%	1.3%
	Projected Annual Growth 2018 to 2023	-0.6%	0.1%	0.4%	0.2%
Households	Current Estimated Households	6,263	48,324	122,665	75,489
	2010 Census Households	5,829	44,023	109,099	68,148
	2000 Census Households	5,583	41,820	101,932	64,741
	Historical Annual Growth 2000 to 2010	0.4%	0.5%	0.7%	0.5%
	Estimated Annual Growth 2010 to 2018	0.9%	1.1%	1.4%	1.2%
	Projected Annual Growth 2018 to 2023	-0.6%	0.1%	0.4%	0.2%
	Population per Household	1.8	2.0	2.2	2.1
Ethnic	Hispanic or Latino Population	14%	21%	29%	27%
	Non Hispanic or Latino Population	86%	79%	71%	73%
Race	White	81.1%	74.8%	71.1%	71.8%
	Black or African American	4.1%	5.6%	6.8%	6.2%
	Asian & Pacific Islander	8.9%	9.6%	8.5%	9.0%
	Other Races	6.0%	10.0%	13.5%	13.0%