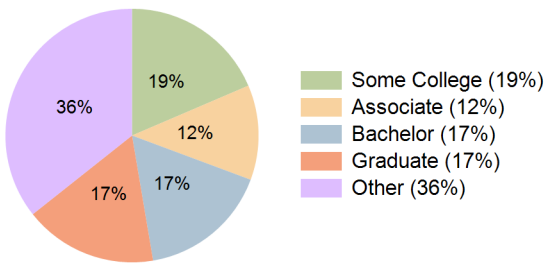
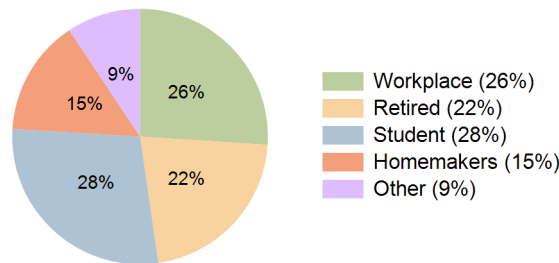


Eastport Eastport, New York	1 Mile Radius	3 Mile Radius	5 Mile Radius	10 Minute Drive
Current Year Demographics				
Current Population	3,147	17,427	38,053	34,014
Total Daytime Pop	2,838	11,678	33,484	30,254
Workplace Pop	696	2,728	9,267	7,876
Average Household Income	\$146,149	\$142,641	\$133,253	\$131,504
Median Household Income	\$111,415	\$116,675	\$107,968	\$108,470
Total Households	1,131	5,896	13,743	11,820
Median Home Value	\$627,287	\$677,257	\$647,756	\$641,448
Bachelors Degree	14.9%	18.0%	17.6%	16.7%
Graduate Degree	17.0%	16.8%	18.4%	17.0%
Total Consumer Spending/Capita (Weekly)	\$479	\$477	\$474	\$474
2027 Demographic Projections				
Projected Population	3,195	17,612	38,662	34,517
Projected 5 Year Annual Growth Rate (Pop)	0.3%	0.2%	0.3%	0.3%
Projected Households	1,148	5,963	13,977	12,007
Projected 5 Year Annual Growth Rate (HH)	0.3%	0.2%	0.3%	0.3%

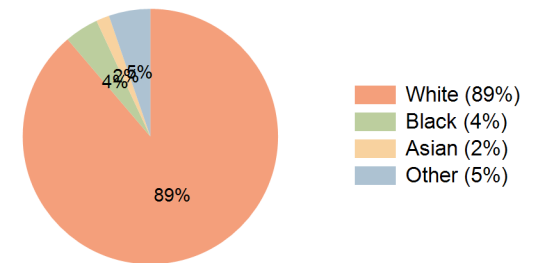
Education (10 Minute Drive)



Daytime Population (10 Minute Drive)

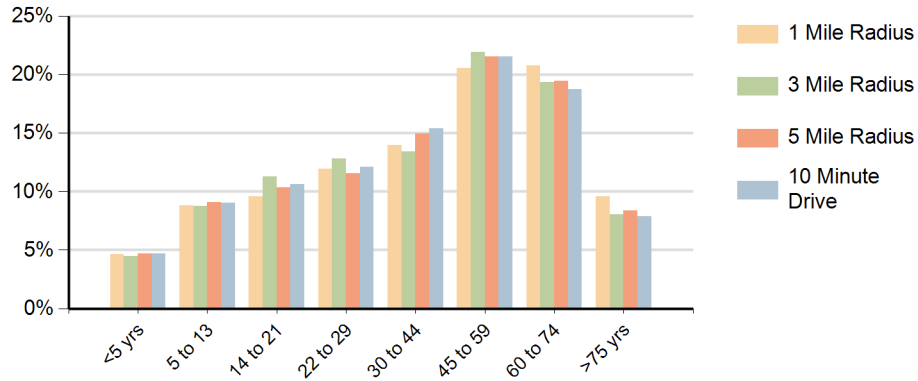


Race (10 Minute Drive)

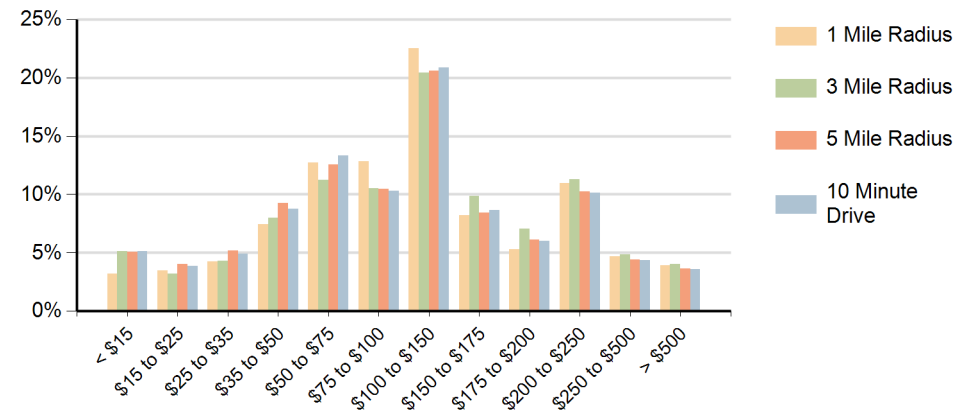


Hispanic Ethnicity
10% Hispanic | 90% Non Hispanic

Population by Age Range



Households by Income Range (\$000)



Eastport Eastport, New York		1 Mile Radius	3 Mile Radius	5 Mile Radius	10 Minute Drive
Population	Current Estimated Population	3,147	17,427	38,053	34,014
	2010 Census Population	2,993	16,868	36,405	32,724
	2000 Census Population	2,529	13,385	31,206	26,817
	Historical Annual Growth 2000 to 2010	1.7%	2.3%	1.6%	2.0%
	Estimated Annual Growth 2010 to 2022	0.4%	0.3%	0.4%	0.3%
	Projected Annual Growth 2022 to 2027	0.3%	0.2%	0.3%	0.3%
Households	Current Estimated Households	1,131	5,896	13,743	11,820
	2010 Census Households	1,071	5,687	13,086	11,317
	2000 Census Households	854	4,588	11,477	9,699
	Historical Annual Growth 2000 to 2010	2.3%	2.2%	1.3%	1.6%
	Estimated Annual Growth 2010 to 2022	0.4%	0.3%	0.4%	0.4%
	Projected Annual Growth 2022 to 2027	0.3%	0.2%	0.3%	0.3%
	Population per Household	2.7	2.9	2.7	2.8
Ethnic	Hispanic or Latino Population	7%	8%	9%	10%
	Non Hispanic or Latino Population	93%	92%	91%	90%
Race	White	92.3%	91.8%	90.0%	88.8%
	Black or African American	2.8%	3.0%	3.2%	4.3%
	Asian & Pacific Islander	1.3%	1.3%	1.6%	1.7%
	Other Races	3.6%	4.0%	5.2%	5.3%