

Wading River Wading River, New York	1 Mile Radius	3 Mile Radius	5 Mile Radius	10 Minute Drive
--	---------------	---------------	---------------	-----------------

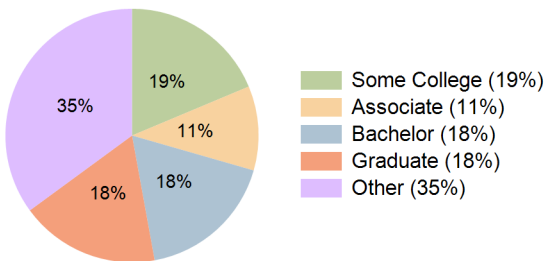
### Current Year Demographics

Current Population	3,283	16,402	37,040	37,408
Total Daytime Pop	4,152	11,731	26,703	31,714
Workplace Pop	957	2,815	6,300	8,104
Average Household Income	\$157,683	\$142,529	\$121,048	\$121,392
Median Household Income	\$144,130	\$124,401	\$97,262	\$99,220
Total Households	1,105	5,654	13,998	13,924
Median Home Value	\$635,046	\$606,815	\$510,256	\$517,930
Bachelors Degree	23.0%	21.6%	17.7%	17.7%
Graduate Degree	28.3%	21.4%	17.7%	17.8%
Total Consumer Spending/Capita (Weekly)	\$505	\$488	\$473	\$474

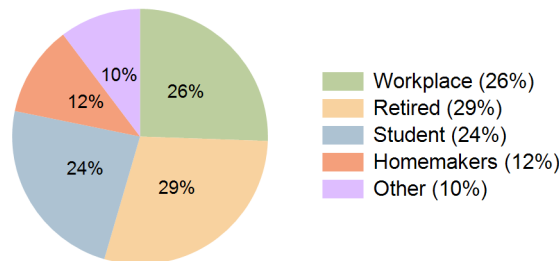
### 2027 Demographic Projections

Projected Population	3,294	16,441	37,128	37,456
Projected 5 Year Annual Growth Rate (Pop)	0.1%	0.0%	0.0%	0.0%
Projected Households	1,109	5,672	14,041	13,952
Projected 5 Year Annual Growth Rate (HH)	0.1%	0.1%	0.1%	0.0%

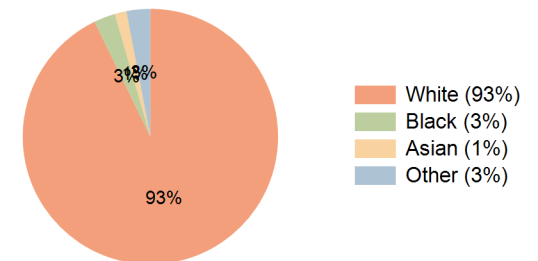
Education (10 Minute Drive)



Daytime Population (10 Minute Drive)

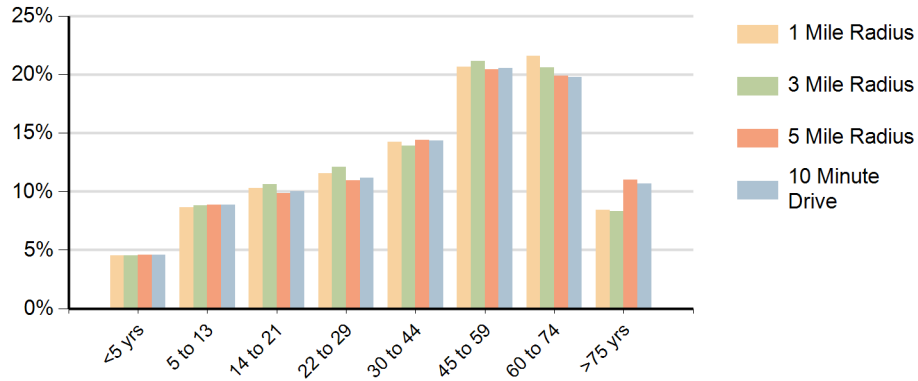


Race (10 Minute Drive)

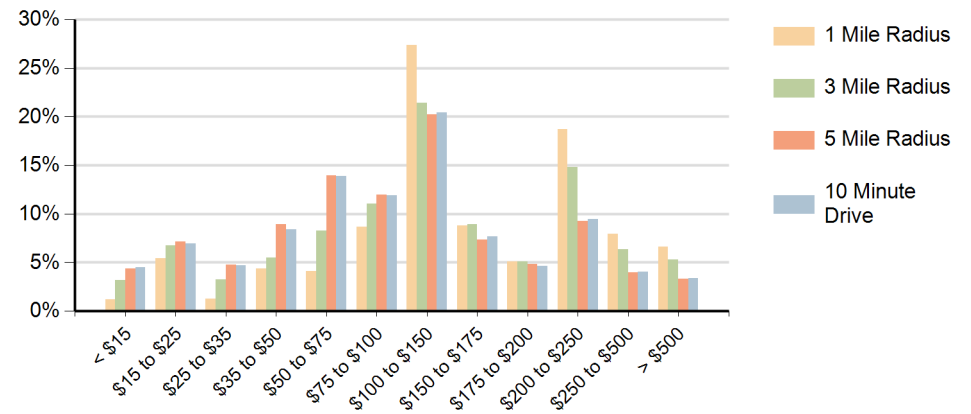


**Hispanic Ethnicity**  
7% Hispanic | 93% Non Hispanic

### Population by Age Range



### Households by Income Range (\$000)



Wading River Wading River, New York		1 Mile Radius	3 Mile Radius	5 Mile Radius	10 Minute Drive
Population	Current Estimated Population	3,283	16,402	37,040	37,408
	2010 Census Population	3,219	16,009	36,180	36,670
	2000 Census Population	2,873	14,582	33,271	33,832
	Historical Annual Growth 2000 to 2010	1.1%	0.9%	0.8%	0.8%
	Estimated Annual Growth 2010 to 2022	0.2%	0.2%	0.2%	0.2%
	Projected Annual Growth 2022 to 2027	0.1%	0.0%	0.0%	0.0%
Households	Current Estimated Households	1,105	5,654	13,998	13,924
	2010 Census Households	1,081	5,514	13,684	13,662
	2000 Census Households	921	4,942	12,462	12,435
	Historical Annual Growth 2000 to 2010	1.6%	1.1%	0.9%	0.9%
	Estimated Annual Growth 2010 to 2022	0.2%	0.2%	0.2%	0.2%
	Projected Annual Growth 2022 to 2027	0.1%	0.1%	0.1%	0.0%
	Population per Household	2.9	2.9	2.6	2.7
Ethnic	Hispanic or Latino Population	7%	7%	7%	7%
	Non Hispanic or Latino Population	93%	93%	93%	93%
Race	White	94.6%	93.2%	92.7%	92.8%
	Black or African American	1.7%	2.5%	2.7%	2.7%
	Asian & Pacific Islander	0.7%	1.4%	1.6%	1.5%
	Other Races	3.0%	2.9%	3.0%	3.0%