

East Meadow East Meadow, New York	1 Mile Radius	3 Mile Radius	5 Mile Radius	10 Minute Drive
--------------------------------------	---------------	---------------	---------------	-----------------

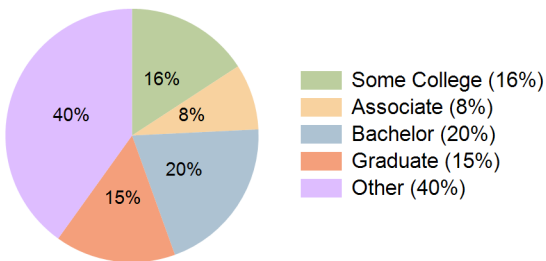
### Current Year Demographics

Current Population	19,686	210,712	526,082	330,750
Total Daytime Pop	17,624	247,660	593,634	377,862
Workplace Pop	7,805	89,287	237,711	138,033
Average Household Income	\$128,479	\$133,437	\$146,153	\$136,300
Median Household Income	\$106,266	\$110,422	\$116,857	\$110,890
Total Households	6,521	63,333	165,905	100,298
Median Home Value	\$644,048	\$617,175	\$645,398	\$622,583
Bachelors Degree	20.0%	20.1%	22.4%	20.3%
Graduate Degree	17.5%	15.2%	17.5%	15.4%
Total Consumer Spending/Capita (Weekly)	\$530	\$527	\$533	\$527

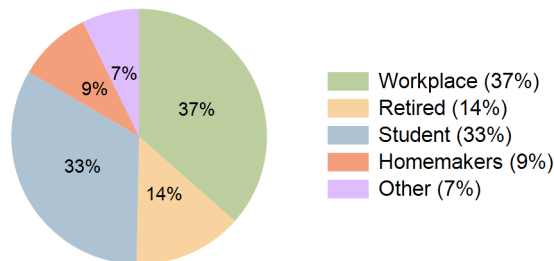
### 2027 Demographic Projections

Projected Population	19,780	210,846	525,343	330,586
Projected 5 Year Annual Growth Rate (Pop)	0.1%	0.0%	0.0%	0.0%
Projected Households	6,568	63,379	165,779	100,257
Projected 5 Year Annual Growth Rate (HH)	0.1%	0.0%	0.0%	0.0%

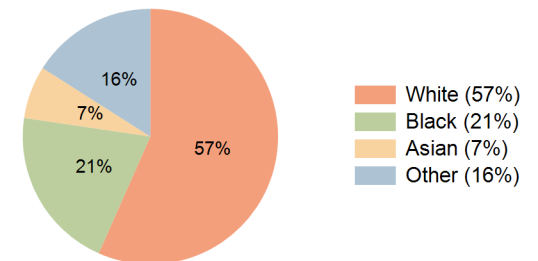
Education (10 Minute Drive)



Daytime Population (10 Minute Drive)

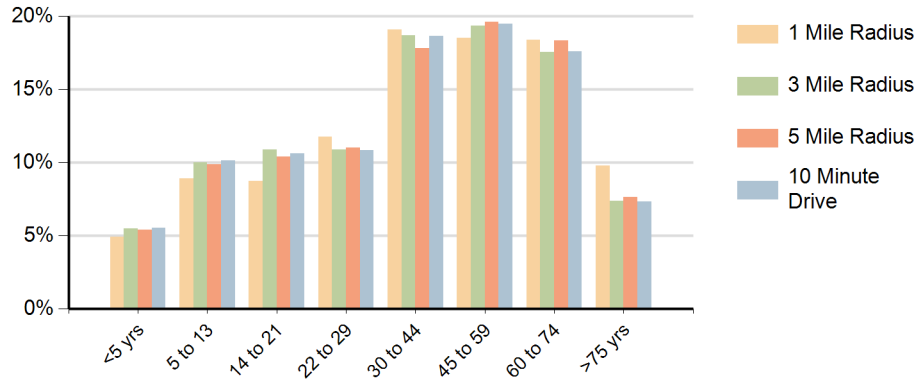


Race (10 Minute Drive)

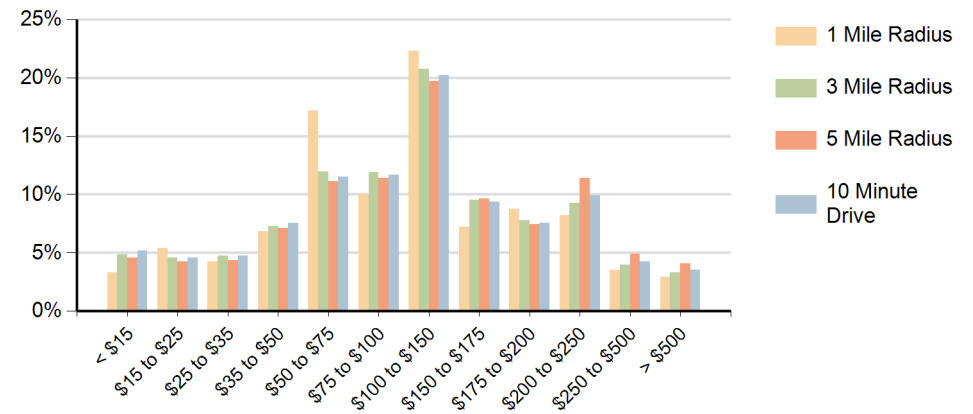


**Hispanic Ethnicity**  
25% Hispanic | 75% Non Hispanic

### Population by Age Range



### Households by Income Range (\$000)



East Meadow East Meadow, New York		1 Mile Radius	3 Mile Radius	5 Mile Radius	10 Minute Drive
Population	Current Estimated Population	19,686	210,712	526,082	330,750
	2010 Census Population	18,774	203,055	509,721	320,221
	2000 Census Population	18,122	198,119	504,533	314,503
	Historical Annual Growth 2000 to 2010	0.4%	0.2%	0.1%	0.2%
	Estimated Annual Growth 2010 to 2022	0.4%	0.3%	0.3%	0.3%
	Projected Annual Growth 2022 to 2027	0.1%	0.0%	0.0%	0.0%
Households	Current Estimated Households	6,521	63,333	165,905	100,298
	2010 Census Households	6,135	60,860	160,238	96,953
	2000 Census Households	5,865	59,407	159,415	95,702
	Historical Annual Growth 2000 to 2010	0.5%	0.2%	0.1%	0.1%
	Estimated Annual Growth 2010 to 2022	0.5%	0.3%	0.3%	0.3%
	Projected Annual Growth 2022 to 2027	0.1%	0.0%	0.0%	0.0%
	Population per Household	2.8	3.2	3.1	3.2
Ethnic	Hispanic or Latino Population	15%	25%	21%	25%
	Non Hispanic or Latino Population	85%	75%	79%	75%
Race	White	72.4%	59.4%	63.2%	56.6%
	Black or African American	7.4%	17.4%	16.2%	20.7%
	Asian & Pacific Islander	11.1%	7.4%	7.2%	6.7%
	Other Races	9.1%	15.8%	13.4%	16.0%